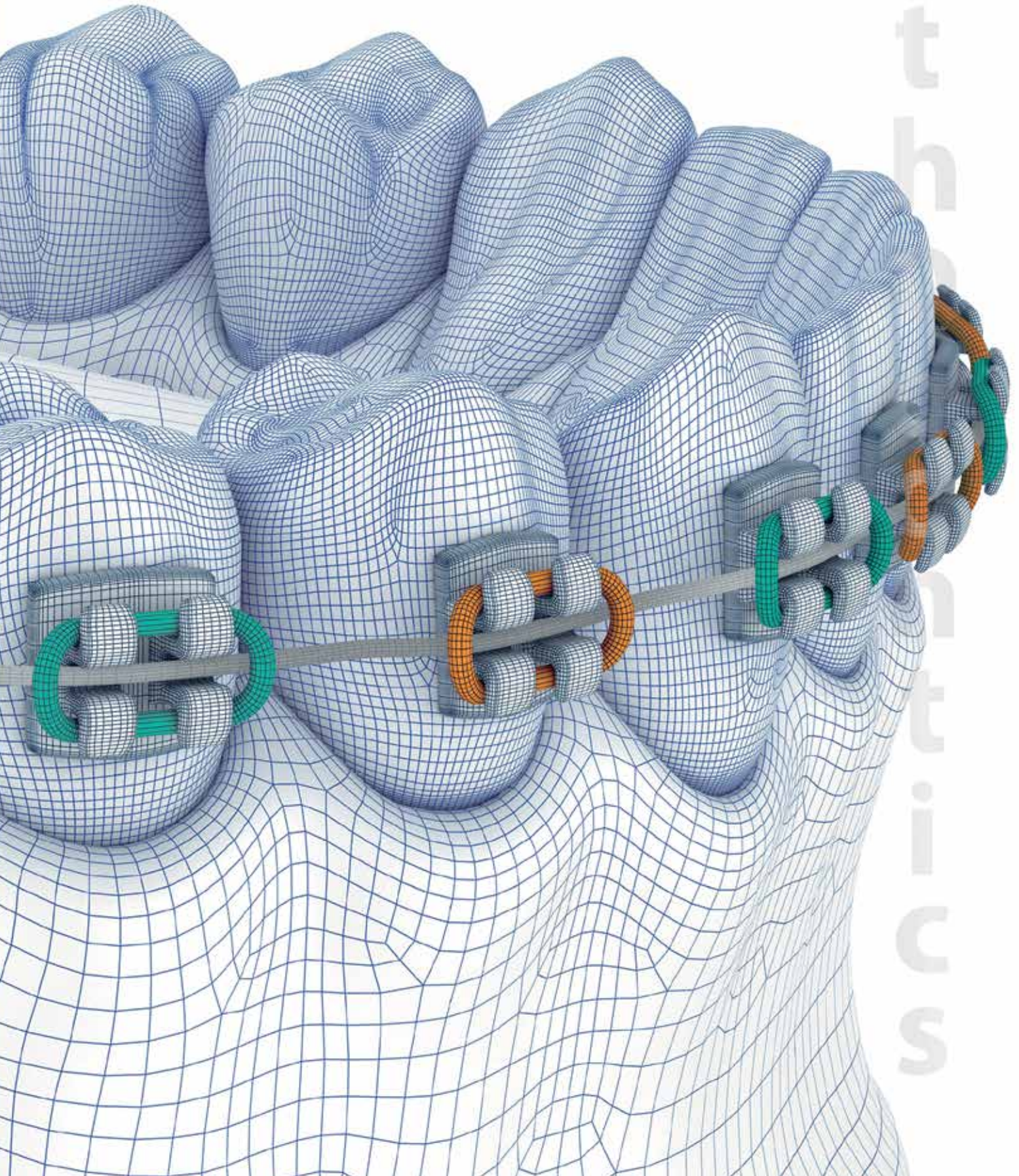




# ortho

Trycare for all your orthodontic solutions





# Welcome to Trycare & Trycare Orthodontics

## Delivering reliability & service

Trycare is the UK's fastest growing Dental Dealer. Since 2016 alone we have quadrupled the size of our warehouse to enable us to stock even more products and expand our ranges to meet the ever-changing dental environment.

Trycare are a long standing independent wholesaler evolving from Baxter Dental, with a pedigree of over 75 years delivering reliability and service.

## Innovation, value & honesty

We incorporate these values into our business activities to provide an unparalleled level of knowledge. We continuously monitor our pricing against our rivals to ensure we are always competitive. Our enviable 'Speciality' ranges are complemented by all the consumables you need on a day to day basis to keep your Practice running smoothly.

## Orthodontics speciality range

With these attributes in mind, it was the right time to launch our Orthodontic Speciality range; a market that is one of the fastest growing areas of the dental industry. This catalogue showcases the most popular and innovative products from our Orthodontic range with many more online.

## Happy to help

We have a dedicated specialist sales team who have a wealth of knowledge and experience spanning many years. Our aim is to make purchasing Orthodontic products streamlined and hassle free with low back orders, quick delivery and impartial advice. The benefits of being able to combine your Dental consumables and Orthodontic orders together is a major advantage to your Practice, reducing deliveries and invoices. You can even set a delivery day that suits the Practice combining the week's orders into one.

## How to order



**01274 88 55 44**



**[www.trycare.co.uk](http://www.trycare.co.uk)**



**[Orthodontics@trycare.co.uk](mailto:Orthodontics@trycare.co.uk)**

## Head Office

Trycare Ltd, Rialto Buildings, Station Road,  
Clayton, Bradford, West Yorkshire, BD14 6JA.



## **SAME DAY DESPATCH**

On all orders placed before 3pm,  
Monday to Friday.

## Delivery costs for UK mainland

Standard delivery for customers £4.95 plus VAT  
or

free for orders over £50 excl VAT.

Trycare aims to despatch all orders placed before 3pm Monday to Friday the same day, either by first class post or courier service. Equipment & heavy goods may be subject to additional delivery charges.



Great Prices, great service, always items in stock. Highly recommend this supplier.



North Street Dental.



## What's inside . . .

Bondable Brackets & Buccal Tubes	04
Wires	12
Distalizer	19
Elastomerics	20
Intra-Oral	23
Wire Products & Attachments	24
Springs & Auxiliaries	29
Bonding & Adhesives	31
Surgical Eruption	37
IPR	38
Debonding Burs	44
Lingual Retention & Flowable Composites	46
Photography	50
Patient Supplies & Whitening	57
Impression Materials & Accessories	68
Hu-Friedy Instruments	69
Pliers & Instruments	86
Small Surgery Equipment	95
Diagnostic	98
Index	99



### COMPETITIVE PRICES

Offering top quality brand names at great prices.



### FREE DELIVERY

On all orders over £50.



### INDEPENDENT DEALER

Over 28,000 dental products in stock.



### FIND US ON SOCIAL

Special offers, competitions & more @trycaredental.

# FLEX Select Flex M Self Ligating

Bondable Brackets & Buccal Tubes

**CHAMFERED SLOT**

for easy wire insertion and added patient comfort

**FULL ROTATIONAL CONTROL**

due to the true twin design

**FULL SLOT CLIP COVERAGE**

for the entire mesial/distal width of every bracket, without deflection, for superior rotational control; allowing the wire to utilise the full width of the true twin design without the need for auxiliaries

**EXPANDED TIE WING UNDERCUTS**

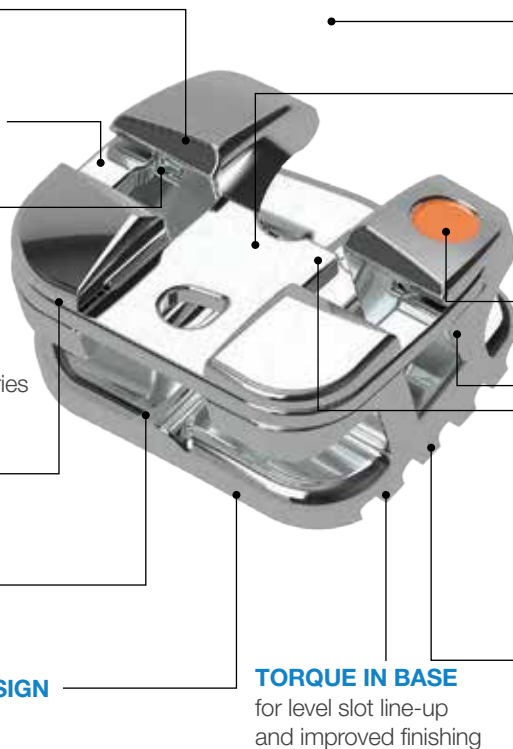
for easy ligation

**LOW PROFILE DESIGN**

for added patient comfort

**STATE-OF-THE-ART BASE DESIGN**

for enhanced bond strength



**SINGLE PIECE CONSTRUCTION**

(MIM) Metal Injection Moulded

**HIGH QUALITY CONVERTIBLE NICKEL TITANIUM CLIP**

offers superior flexibility with the option to remove the clip during the finishing phase if desired

**PERMANENT COLOUR ENHANCED I.D. MARKS**

for easy bracket selection

**DUAL LOCKING MECHANISM**

ensures the clip remains securely engaged for the lifetime of treatment

**CENTRE SCRIBE LINE**

for more accurate bracket placement

**COMPOUND CONTOUR**

for increased bond strength and precise bracket placement

FLEX Select

**Patient Kit**

U&L 5-5.

Kit of 20 brackets.

**Hooks on 3**

UGHF183

**Hooks on 3,4,5**

UGHF184



FLEX Select

**Flex M Self Ligating MBT .022**

		Torque	Angle	Left	Right	Pk
<b>Upper</b>	Central	17°	4°	UGHF170	UGHF171	5
	Lateral	10°	8°	UGHF172	UGHF173	5
	Cuspid with hook	0°	8°	UGHF174	UGHF176	5
	Cuspid with hook	7°	8°	UGHF175	UGHF177	5
	Universal 1st & 2nd Bicuspid	7°	0°	UGHF180	UGHF180	5
	1st & 2nd Bicuspid with hook	7°	0°	UGHF178	UGHF179	5
<b>Lower</b>	Anterior L1,2	-6°	0°	UGHF159	UGHF159	5
	Cuspid with hook	0°	+3°	UGHF160	UGHF162	5
	Cuspid with hook	-6°	+3°	UGHF161	UGHF163	5
	Universal 1st Bicuspid	-12°	0°	UGHF166	UGHF166	5
	1st Bicuspid with hook	-12°	0°	UGHF164	UGHF165	5
	Universal 2nd Bicuspid	-17°	0°	UGHF169	UGHF169	5
	2nd Bicuspid with hook	-17°	0°	UGHF167	UGHF168	5



**FULL ROTATIONAL CONTROL**

due to the twin design

**CONTOURED TIE WINGS**

for enhanced patient comfort

**ROUNDED FACIAL CONTOURS**

for patient comfort

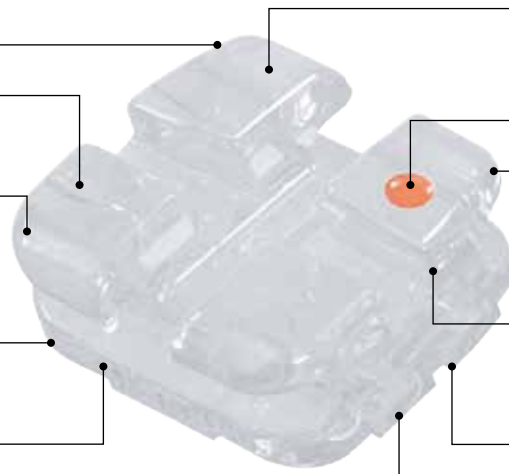
**TORQUE-IN-BASE**

for level slot line-up  
and accurate finishing

**UNIQUE BASE DESIGN**

for enhanced bond strength

- 100% mechanical bonds
- No special or specific adhesive necessary
- Precise anatomical contours



**TRANSLUCENT IN APPEARANCE**

for optimum aesthetics

**COLOUR ENHANCED I.D**

for easy bracket selection

**INCREASED TIE WING AREA**

for easy ligation

**ROUNDED EDGES**

at the slot entrance and exit  
for reduced friction

**PORTAL**

for secure mechanical bonds

**COMPOUND CONTOUR BASE**

for increased bond strength  
and precise bracket placement

FLEX Select

**Patient Kit**

U&L 5-5. Kit of 20 brackets.

**Hooks on 3,4,5**

UGHF182



FLEX Select

**Flex Ceramic MBT .022**

		Left	Right	Pk
<b>Upper</b>	Central	UGHF136	UGHF137	5
	Lateral	UGHF138	UGHF139	5
	Cuspid with Hook	UGHF140	UGHF141	5
	1st & 2nd Bicuspid with Hook	UGHF142	UGHF143	5
<b>Lower</b>	Anterior L1,2	UGHF129	UGHF129	5
	Cuspid with Hook	UGHF130	UGHF131	5
	1st Bicuspid with Hook	UGHF132	UGHF133	5
	2nd Bicuspid with Hook	UGHF134	UGHF135	5

FLEX Select  
Flex Metal

**17-4 GRADE SS CAST MANUFACTURING**

for greater strength and exact slot tolerance

**CHAMFERED SLOT**

for easy wire insertion

**ROUNDED TIE WINGS**

for patient comfort

**FULL ROTATIONAL CONTROL**

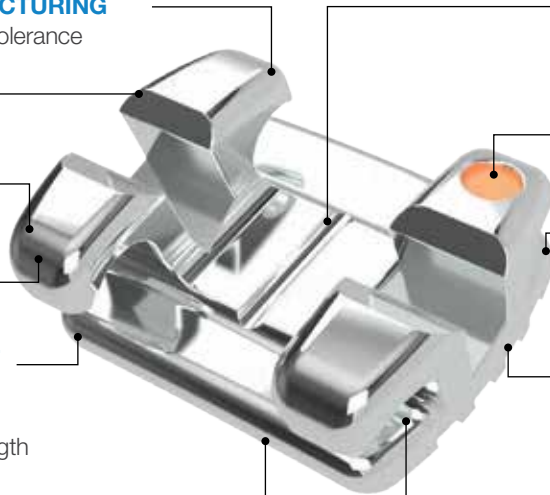
due to the twin design

**INTEGRAL STATE-OF-THE-ART BASE DESIGN**

available in Anchor-Lock™ pad technology to maximize bond strength

**RHOMBOID LOW PROFILE DESIGN**

for patient comfort and precise bonding



**CENTRE SCRIBE LINE**

aligns with long axis for accurate placement

**COLOUR ENHANCED I.D.**

for easy bracket selection

**TORQUE IN BASE**

for level slot line-up and improved finishing

**COMPOUND CONTOUR BASE**

for increased bond strength and precise bracket placement

**INCREASED TIE WING AREA**

to facilitate ligation

FLEX Select

**Patient Kit**

U&L 5-5. Kit of 20 brackets.

**Hooks on 3,4,5**

UGHF181



FLEX Select

**Flex Metal MBT .022**

		Left	Right	Pk
<b>Upper</b>	Central	UGHF151	UGHF152	5
	Lateral	UGHF153	UGHF154	5
	Cuspid with hook	UGHF155	UGHF156	5
	1st & 2nd Bicuspid with Hook	UGHF157	UGHF158	5
<b>Lower</b>	Anterior L1,2	UGHF144	UGHF144	5
	Cuspid with Hook	UGHF145	UGHF146	5
	1st Bicuspid with Hook	UGHF147	UGHF148	5
	2nd Bicuspid with Hook	UGHF149	UGHF150	5



FLEX Select  
Flex Mini Twin

Bondable Brackets & Buccal Tubes

**METAL INJECTION MOLDED (MM)**  
micro-grain stainless steel powder ensures exact tolerances and strength of design

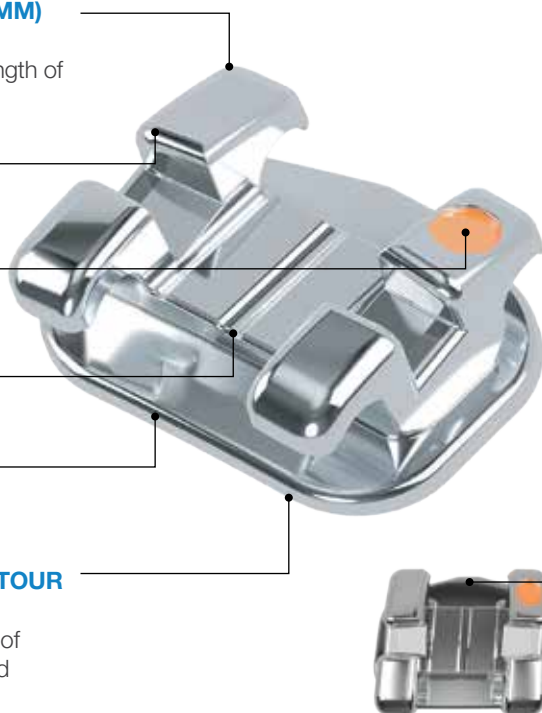
**SURGICAL-GRADE STAINLESS STEEL**  
for greater strength

**COLOUR ENHANCED I.D.**  
for easy bracket selection

**CENTRE SCRIBE LINE**  
aligns with long axis for accurate placement

**TORQUE IN BASE**  
for level slot line-up and improved finishing

**80 GAUGE ANATOMICAL CONTOUR BONDING BASE**  
matches the anatomical curvature of the tooth for maximum contact and a strong, consistent bond



**LOW PROFILE**  
• reduces occlusal interference  
• enhances comfort

**ROUNDED FACIAL CONTOURS**  
for patient comfort



**INCREASED TIE WING AREA**  
to facilitate ligation

**RHOMBOIDAL SHAPE**  
Mesiodistal sides line up with the long axis and incisogingival sides line up with the occlusal plane

FLEX Select

Patient Kit

U&L 5-5.  
Kit of 20 brackets.

**Hooks on 3**  
UGHF341

**Hooks on 3,4,5**  
UGHF342



FLEX Select

Flex Mini Twin MBT .022

		Torque	Angle	Left	Right	Pk
<b>Upper</b>	Central	-17°	4°	UGHF354	UGHF355	5
	Lateral	-0°	-8°	UGHF356	UGHF357	5
	Cuspid with hook	10°	8°	UGHF358	UGHF360	5
	Cuspid with hook	7°	8°	UGHF359	UGHF361	5
	Universal 1st & 2nd Bicuspid	-7°	0°	UGHF364	UGHF364	5
	1st & 2nd Bicuspid with hook	-7°	0°	UGHF362	UGHF363	5
<b>Lower</b>	Anterior L1,2	-6°	0°	UGHF343	UGHF343	5
	Cuspid with hook	0°	+3°	UGHF344	UGHF346	5
	Cuspid with hook	-6°	+3°	UGHF345	UGHF347	5
	Universal 1st Bicuspid	-12°	0°	UGHF350	UGHF350	5
	1st Bicuspid with hook	-12°	0°	UGHF348	UGHF349	5
	Universal 2nd Bicuspid	-17°	0°	UGHF353	UGHF353	5
	2nd Bicuspid with hook	-17°	0°	UGHF351	UGHF352	5

**MALLEABLE COMFORT BALL HOOK**

enhances patient comfort and avoids gingival impingement

**METAL INJECTION MOLDED (MIM) STAINLESS STEEL**

**LOW PROFILE**  
to avoid occlusal interference

**TORQUE-IN-BASE**  
for easier alignment with optimal functional occlusion and case finishing

**COMPOUND CONTOUR BASE**  
anatomically conforms to the tooth and provides proper fit and appliance expression

**FULL FUNNELED ENTRANCE**  
helps guide wire into buccal tube

**MESIAL/DISTAL DIMENSION**  
4.2mm for full rotational control

**PERMANENT COLOUR ENHANCED I.D.**  
marks on the facial surface assist in bonding & positioning

**DISTAL NOTCH**  
provides additional anchorage for ligation and tieback of auxiliaries

**OCCUSAL/GINGIVAL POSITIONING GUIDES**  
allow for easy placement at the posterior region and assist with minor adjustments prior to curing the adhesive



**ANATOMICALLY FORMED BASE MICRO-ETCHED 80 GAUGE MESH**

with developmental indent for precise fit and positioning, micro-etched mesh provides enhanced bond strength



.260" (6.604mm) x .120" (3.048mm)



.200" (5.08mm) x .1150" (2.921mm)

FLEX Select

Flex LP Buccal Tube MBT .022

Left		Right		Pk
UL6	UGHF339	UR6	UGHF337	10
LL6	UGHF335	LR6	UGHF333	10
UL7	UGHF340	UR7	UGHF338	10
LL7	UGHF336	LR7	UGHF334	10





## Astar Bracket Collection



### MEILY Bracket MBT .022



U&L 5-5. Kit of 20 brackets.

		Hooks on 3	Hooks on 3,4,5
Upper/Lower	Mini size	UAST001	UAST002
Upper/Lower	Full size	UAST003	UAST004

U&L 6-6. Kit of 20 brackets.

		Hooks on 3
Upper/Lower	Mini size	UAST155

- MIM manufacturing process: ensures a smooth surface and round contours
- Strong Slot and Hooks
- Accurate archwire slot
- Smooth finish with reduced friction
- Colour coded markings - easy quadrant identification
- Ample under tie-wing area - easy ligature placement
- Choice of Mini (as featured) or Full size for super rotational control



### Gold Plated Bracket MBT .022



U&L 5-5. Kit of 20 brackets.

		Hooks on 3
Upper/Lower		UAST140

- MIM manufacturing process: ensures a smooth surface and round contours
- Strong Slot and Hooks
- Accurate archwire slot
- Smooth finish with reduced friction
- Colour coded markings - easy quadrant identification
- Ample under tie-wing area - easy ligature placement



### OPPA™ Self-Ligating Active Bracket MBT .022



U&L 5-5. Kit of 20 brackets.

		Hooks on 3	Hooks on 3,4,5
Upper/Lower		UAST005	UAST006

- MIM manufacturing process: ensures a smooth surface and round contours
- Full Rotational Control - clip extends to the edge of the bracket
- Archwire friction free up to .020
- Clip maintains torque control in rectangular wires
- Colour coded markings - easy quadrant identification

OPPA™ Opening Tool	UAST139
--------------------	---------

Easter™/Oppa Opening Tool	UAST138
---------------------------	---------





## Astar Bracket Collection



### Easter™ Self-Ligating Passive Brackets MBT .022

U&L 5-5.  
Kit of 20 brackets.

**Upper/Lower**

**Hooks on 3**

UAST007

**Hooks on 3,4,5**

UAST008

- Durable sliding clip which fully seats for easy cleaning
- Gingival horizontal auxiliary slot for further treatment mechanics
- Vertical scribe line for easy and accurate bracket placement
- Smooth finish with reduced friction
- Colour coded markings - easy quadrant identification
- A simple twist and the bracket opens.



**Easter™/Oppa Opening Tool**

UAST138



**Easter™ Opening Tool Single Ended**

UAST009



### TONIA™ Low Profile Buccal Tube MBT .022

- MIM manufacturing process
- Low profile design - maximum patient comfort
- Funnelled entrance for easy wire insertion
- 80 Gauge mesh base for a precise fit and excellent bond strength
- Permanent numbered quadrant identification marking.

		Torque	Angle	Left	Right	Pk
Upper	1 <sup>st</sup> Molar	-14°	10°	UAST014	UAST015	10
	2 <sup>nd</sup> Molar	-14°	10°	UAST018	UAST019	10
Lower	1 <sup>st</sup> Molar	-10°	0°	UAST016	UAST017	10
	2 <sup>nd</sup> Molar	-10°	0°	UAST020	UAST021	10





## Astar Bracket Collection



### RICA™ Low Profile Brackets MBT .022

U&L 5-5.  
Kit of 20 brackets.

Upper/Lower	Hooks on 3	Hooks on 3,4,5
	UAST010	UAST011

- CIM (Ceramic Injection Moulded) manufacturing process: ensures a smooth bracket surface and round contours
- Mechanical lock base to ensure reliable bond strengths
- Standard debonding procedure
- Colour coded markings - easy quadrant identification.



### EXACT™ Ceramic Sapphire Brackets MBT .022

U&L 5-5.  
Kit of 20 brackets.

Upper/Lower	Hooks on 3	Hooks on 3,4,5
	UAST012	UAST013

- CIM (Ceramic Injection Moulded) manufacturing process: a smooth bracket surface and round contours
- Pure monocrystal sapphire - completely transparent
- Standard debonding procedure
- Soluble black slot scribe line for easy bracket placement.



### Crisel™ Self-Ligating Ceramic Passive Brackets MBT .022

U&L 5-5.  
Kit of 20 brackets.

Upper/Lower	Hooks on 3	Hooks on 3,4,5
	UAST146	UAST147

- CIM manufacturing process: ensures a smooth bracket surface and round contours
- Fully Ceramic providing ultimate aesthetics
- Reliable sliding clip - easy operation
- Stain resistant - no unsightly elastomers
- Kit includes opening tool.



## Astar Archwire Collection



### SuperElastic Archwires

Europa I Archform					
Size	Upper	Lower	Size	Upper	Lower
.012	UAST029	UAST030	.016 x .016	UAST039	UAST040
.014	UAST031	UAST032	.016 x .022	UAST041	UAST042
.016	UAST033	UAST034	.017 x .025	UAST043	UAST044
.018	UAST035	UAST036	.018 x .025	UAST045	UAST046
.020	UAST037	UAST038	.019 x .025	UAST047	UAST048
			.021 x .025	UAST049	UAST050



### Thermal Archwires

Europa I Archform					
Size	Upper	Lower	Size	Upper	Lower
.012	UAST051	UAST052	.016 x .016	UAST061	UAST062
.014	UAST053	UAST054	.016 x .022	UAST063	UAST064
.016	UAST055	UAST056	.017 x .025	UAST065	UAST066
.018	UAST057	UAST058	.018 x .025	UAST067	UAST068
.020	UAST059	UAST060	.019 x .025	UAST069	UAST070
			.021 x .025	UAST071	UAST072



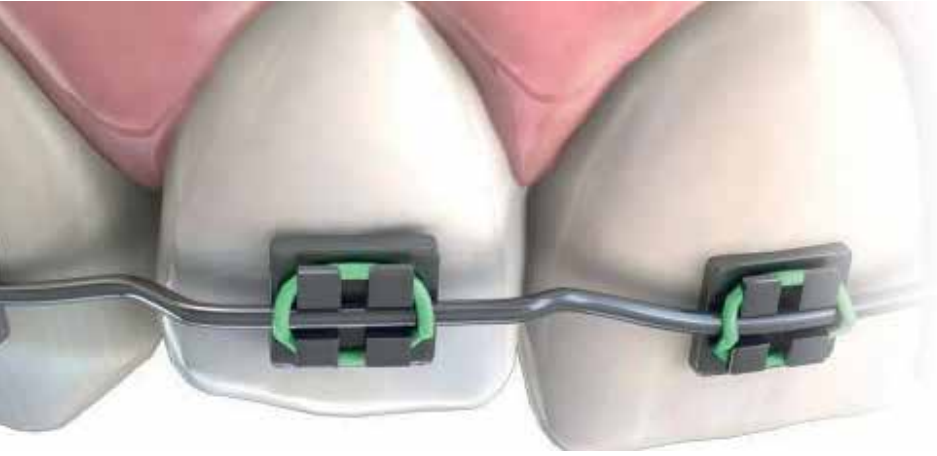
### Stainless Steel Archwires

Europa I Archform					
Size	Upper	Lower	Size	Upper	Lower
.012	UAST091	UAST092	.016 x .016	UAST101	UAST102
.014	UAST093	UAST094	.016 x .022	UAST103	UAST104
.016	UAST095	UAST096	.017 x .025	UAST105	UAST106
.018	UAST097	UAST098	.018 x .025	UAST107	UAST108
.020	UAST099	UAST100	.019 x .025	UAST109	UAST110
			.021 x .025	UAST111	UAST112



### TMA Archwires

Europa I Archform					
Size	Upper	Lower	Size	Upper	Lower
.012	-	-	.016 x .016	UAST081	UAST082
.014	UAST073	UAST074	.016 x .022	UAST083	UAST084
.016	UAST075	UAST076	.017 x .025	UAST085	UAST086
.018	UAST077	UAST078	.018 x .025	UAST087	UAST088
.020	UAST079	UAST080	.019 x .025	UAST089	UAST090



**FLEX**Select

**Super Elastic Nickel Titanium**



Pack 10.

- Teeth move farther & faster with lower initial load forces & increased residual forces as full shape recovery progresses
- Lower load forces of engagement
- Easier wire deflection and delivery to bracket
- Less stress on bonds
- Increased patient comfort
- Higher residual forces of recovery
- Full shape recovery
- Complete unravelling and archform development
- Stays active to the end - Moves teeth the last 1/2mm.

Super Elastic Nickel Titanium						
Europa Form I			Europa Form II (Damon*)		Spool 15ft	
Size	Upper	Lower	Size	Code	Size	Upper
.010	-	-	.010	-	.010	UGHF115
.012	UGHF069	UGHF074	.012	-	.012	UGHF116
.013	-	-	.013	UGHF121	.013	-
.014	UGHF070	UGHF075	.014	UGHF122	.014	UGHF117
.016	UGHF071	UGHF076	.016	UGHF123	.016	UGHF118
.018	UGHF072	UGHF077	.018	UGHF124	.018	UGHF119
.020	UGHF073	UGHF078	-	-	.020	UGHF120
.014x.025	UGHF079	UGHF086	.014x.025	UGHF475	-	-
.016x.022	UGHF080	UGHF087	.016x.022	UGHF125	-	-
.016x.025			.016x.025	UGHF126	-	-
.017x.025	UGHF081	UGHF088	-	-	-	-
.018x.025	UGHF082	UGHF089	-	-	-	-
.019x.025	UGHF083	UGHF090	-	-	-	-
.020x.020	UGHF084	UGHF091	-	-	-	-
.021x.025	UGHF085	UGHF092	-	-	-	-

\*FlexSelect® Orthodontics is in no way affiliated with or endorsed by Ormco Corporation or Dr. Dwight Damon





### Thermal Heat Activated Copper Nickel Titanium



Pack 10.

Thermal Heat Activated Nickel Titanium				
Europa Form I			Europa Form II (Damon)	
Size	Upper	Lower	Size	Upper
.012	UGHF365	UGHF370	.012	-
.014	UGHF366	UGHF371	.014	UGHF407
.016	UGHF367	UGHF372	.016	UGHF408
.018	UGHF368	UGHF373	.018	UGHF409
.020	UGHF369	UGHF374	.020	UGHF410
.014x.025	-	-	.014x.025	UGHF411
.016x.022	UGHF383	UGHF389	-	-
.016x.025	-	-	.016x.025	UGHF412
.017x.025	UGHF384	UGHF391	-	-
.018x.025	UGHF385	UGHF392	.018x.025	UGHF413
.019x.025	UGHF386	UGHF393	-	-
.020x.020	UGHF387	UGHF394	-	-
.021x.025	UGHF388	UGHF395	-	-

- Thermal heat activated
- Gentler loading forces for easier engagement
- Lower loading forces than superelastic
- Precise temperature transformation at 35°C
- Consistent and predictable tooth moving forces.



### Reverse Curve Thermal Copper Niti Archwires



Pack 10.

Reverse Curve I		
Thermal NiTi		
Size	Upper	Lower
.014	UGHF375	UGHF379
.016	UGHF376	UGHF380
.018	UGHF377	UGHF381
.020	UGHF378	UGHF382
.016x.022	UGHF396	UGHF401
.017x.025	UGHF397	UGHF402
.018x.025	UGHF398	UGHF404
.019x.025	UGHF399	UGHF405
.021x.025	UGHF400	UGHF406

- State-of-the-art forming ensures precise archforms
- Copper Nickel Titanium archwires transformation at 35°C
- Thermal heat activated
- Gentler loading forces for easier engagement
- Lower loading forces than superelastic.

Reverse Curve Archwires are ideal for:

- Preventing molar rotation and tipping
- Anterior torque maintenance
- Initial levelling and aligning
- Arch consolidation and expansion
- Correction of deep and open bites
- Retraction of flared, protruding incisors.

**FLEX Select**  
Stainless Steel



**Pack 10.**

- 304v Medical Grade Stainless Steel Wire
- State-of-the-art forming ensures precise archforms.

Stainless Steel				
Europa Form I			Europa Form II (Damon*)	
Size	Upper	Lower	Size	Upper
.012	UGHF027	UGHF032	-	-
.014	UGHF028	UGHF033	-	-
.016	UGHF029	UGHF034	-	-
.018	UGHF030	UGHF035	-	-
.020	UGHF031	UGHF036	-	-
.016x.022	UGHF037	UGHF042	.016x.022	UGHF125
.016x.025	-	-	.016x.025	UGHF126
.017x.025	UGHF038	UGHF043	-	-
.018x.025	UGHF039	UGHF044	-	-
.019x.025	UGHF040	UGHF045	-	-
.021x.025	UGHF041	UGHF046	-	-

**FLEX Select**  
Stainless Steel Posted



**Pack 10.**

Stainless Steel Posted			
19x25	Europa I	19x25	Europa
22mm	UGHF015	34mm	UGHF021
24mm	UGHF016	36mm	UGHF022
26mm	UGHF017	38mm	UGHF023
28mm	UGHF018	40mm	UGHF024
30mm	UGHF019	42mm	UGHF025
32mm	UGHF020	44mm	UGHF026

- 304v Medical Grade Stainless Steel Wire
- Bendable Brass posts are soldered with a proprietary technique that eliminates annealed wires and ensures clean, strong and consistent joints.

**FLEX Select**  
TMA Titanium Molybdenum Alloy



**Pack 10.**

\*FlexSelect® Orthodontics is in no way affiliated with or endorsed by Ormco Corporation or Dr. Dwight Damon.

Titanium Molybdenum				
Europa Form I			Europa Form II (Damon*)	
Size	Upper	Lower	Upper	Lower
.016	UGHF011	UGHF013	-	-
.018	UGHF012	UGHF014	-	-
.016x.022	UGHF005	UGHF008	UGHF001	-
.017x.025	UGHF006	UGHF009	UGHF002	-
.019x.025	UGHF007	UGHF010	UGHF003	-
.021x.025	-	-	UGHF004	-

The moderate force alternative to Stainless Steel Archwires

- TMA Provides force levels 45% less than those of equivalent Stainless Steel arches
- Smooth Surface-mechanically polished
- Accepts adaptation bends without breaking
- The ultimate detailing wire
- Nickel-free.



### Tooth Coloured Super Elastic Nickel Titanium



Pack 10.

Tooth Coloured Nickel Titanium		
Europa Form I		
Size	Upper	Lower
.012	UGHF093	UGHF098
.014	UGHF094	UGHF099
.016	UGHF095	UGHF100
.018	UGHF096	UGHF101
.020	UGHF097	UGHF102
.016x.022	UGHF103	UGHF109
.017x.025	UGHF104	UGHF110
.018x.025	UGHF105	UGHF111
.019x.025	UGHF106	UGHF112
.020x.020	UGHF107	UGHF113
.021x.025	UGHF108	UGHF114

- Super Elastic Nickel Titanium
- Coated with a tooth-coloured epoxy that is durable, stain resistant and just the right shade
- Teeth move farther and faster with lower initial load forces and increased residual forces as full shape recovery progresses
- Lower load forces of engagement.

- Easier wire deflection and delivery to bracket
- Less stress on bonds
- Increased patient comfort
- Higher residual forces of recovery
- Full shape recovery
- Complete unravelling and archform development
- Stays active to the end -  
Moves teeth the last 1/2mm.



### Tooth Coloured - Stainless Steel



Pack 10.

Stainless Steel Tooth Coloured				
Europa Form I			Europa Form II (Damon*)	
Size	Upper	Lower	Size	Upper
.014	UGHF047	UGHF051	-	-
.016	UGHF048	UGHF052	-	-
.018	UGHF049	UGHF053	-	-
.020	UGHF050	UGHF054	-	-
.016x.022	UGHF055	UGHF062	-	-
.017x.025	UGHF056	UGHF063	.017x.025	UGHF127
.018x.025	UGHF058	UGHF065	-	-
.019x.025	UGHF059	UGHF066	.019x.025	UGHF128
.020x.020	UGHF060	UGHF067	-	-
.021x.025	UGHF061	UGHF068	-	-

- 304v Medical Grade Stainless Steel Wire
- State-of-the-art forming ensures precise archforms
- Coated with a tooth-coloured epoxy that is durable, stain resistant and just the right shade.

\*FlexSelect® Orthodontics is in no way affiliated with or endorsed by Ormco Corporation or Dr. Dwight Damon



**New  
Innovative  
Product**



**Tooth Coloured Facially Coated Super Elastic Nickel Titanium**

Europa Form I		
Size	Upper	Lower
.014	UMA0046	UMA0051
.016	UMA0047	UMA0052
.018	UMA0048	UMA0053
.020	UMA0049	UMA0054
.014x.025	UMA0055	UMA0064
.016x.016	UMA0056	UMA0065
.016x.022	UMA0057	UMA0066
.016x.025	UMA0058	UMA0067
.017x.025	UMA0059	UMA0068
.018x.018	UMA0060	UMA0069
.018x.025	UMA0061	UMA0070
.019x.025	UMA0062	UMA0071
.021x.025	UMA0063	UMA0072

- MDW-Micro Dental White Aesthetic Archwires
- Labial surface coating
- Almost invisible in the mouth. The perfect companion to aesthetic brackets
- Reduced friction and improved sliding mechanics compared to fully coated archwires
- Stain and Crack Resistant
- Exact Archwire Size with no compromise on treatment mechanics.



**Pack 10.**



**Tooth Coloured Facially Coated Stainless Steel**

Europa Form I		
Size	Upper	Lower
.012	UMA0073	UMA0078
.014	UMA0074	UMA0079
.016	UMA0075	UMA0080
.018	UMA0076	UMA0081
.020	UMA0077	UMA0082
.016x.016	UMA0083	UMA0090
.016x.022	UMA0084	UMA0091
.016x.025	UMA0085	UMA0092
.017x.025	UMA0086	UMA0093
.018x.018	UMA0087	UMA0094
.018x.025	UMA0088	UMA0095
.019x.025	UMA0089	UMA0096

- MDW-Micro Dental White Aesthetic Archwires
- Labial surface coating
- Almost invisible in the mouth. The perfect companion to aesthetic brackets
- Reduced friction and improved sliding mechanics compared to fully coated archwires
- Stain and Crack Resistant
- Exact Archwire Size with no compromise on treatment mechanics.



**Pack 10.**



### Stainless Steel Tri-Sectional Archwire with Hooks (Wonder Wire)

• .019x.025 Anterior .018x.018 Posterior.

Size (mm)	Code
22	UMA0097
24	UMA0098
26	UMA0099
28	UMA0100
30	UMA0101
32	UMA0102
34	UMA0103
36	UMA0104
38	UMA0105
40	UMA0106
42	UMA0107
44	UMA0108
46	UMA0109
48	UMA0110
50	UMA0111

Size (mm)	Code
Upper Kit	UMA0113

**Kit contains:** (6 Arches) 1x32, 2x34, 2x36, 1x38.

Size (mm)	Code
Lower Kit	UMA0112

**Kit contains:** (6 Arches) 1x22, 2x24, 2x26, 1x38.

- Free sliding, control with minimal force
- Allows full torque control anterior & free sliding posterior tooth movement
- Use lightly placed steel ligatures on posterior brackets.



Pack 5.



### Multi-Stranded Wire 6x Strand Co-Axial

Wire Size	Length	Code	Pack
.0155	14"	UMA0037	20
.0175	14"	UMA0038	20
.0195	14"	UMA0039	20
.0215	14"	UMA0040	

Wire Size	Spool	Code
.0155	Spool	UMA0041
.0175	Spool	UMA0042
.0195	Spool	UMA0043
.0215	Spool	UMA0044



# BioCrystal Aesthetic Distalizer

Distalizer



- Simple Fabrication for Class II and III cases  
Bond the loose button to the first molar
- Measure the arm for bonding to the middle third of the canine allowing for full insertion into the first molar
- Bond a buccal tube to the opposing molar
- Run Class II or Class III Elastics to activate
- Elastics for Activation.



## Bio-Crystal Distalizer Kit

- Stain Resistant Polycarbonate Aesthetics
- 4 sets of distalizers with tubes
- Fully Adjustable, clear ruler included
- Amazing clarity, function and very aesthetic
- 2 pairs of Distalizers Cost Effective
- Easy instructions included
- No Inventory Issues - One size fits all
- No Laboratory Fee.

Diameter	Force	Force Rating	Code
1/4"	6.5oz	F1	UREL046
3/16"	8.5oz	F2	UGHF476

Pack 4 Code: UMA0034





**Flexselect Latex Free Elastomerics**

Designed to maximise clinical functionality. Engage with a firm feel - facilitate tooth movement and archwire retention.

**22 ties per stick.  
46 sticks per pack.**

**Ligatures**  
0.120 Diameter

**Elastomeric Chain - 15ft spool, 0.026" (0.66mm thickness)**

Continuous

Short

Long





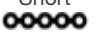
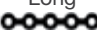
















		Ligatures 0.120 Diameter	Continuous	Short	Long
	Clear	UGHF187	UGHF222	UGHF289	UGHF255
	Pearl	UGHF208	UGHF243	UGHF310	UGHF276
	White	UGHF219	UGHF252	UGHF319	UGHF286
	Glow	UGHF195	UGHF230	UGHF297	UGHF263
	Tooth	UGHF215	UGHF249	UGHF316	UGHF283
	Metallic Gold	UGHF193	UGHF228	UGHF295	UGHF261
	Yellow	UGHF220	UGHF253	UGHF287	UGHF286
	Fluorescent Orange	UGHF189	UGHF224	UGHF291	UGHF257
	Orange	UGHF204	UGHF239	UGHF305	UGHF272
	Pink	UGHF207	UGHF242	UGHF308	UGHF275
	Fluorescent Pink	UGHF190	UGHF225	UGHF291	UGHF258
	Fuchsia	UGHF191	UGHF226	UGHF293	UGHF259
	Pearl Blue	UGHF205	UGHF240	UGHF306	UGHF273
	Lavender	UGHF198	UGHF233	UGHF300	UGHF266
	Metallic Purple	UGHF209	UGHF244	UGHF311	UGHF277
	Ruby Red	UGHF212	UGHF246	UGHF313	UGHF279
	Metallic Red	UGHF201	UGHF236	UGHF303	UGHF269



22 ties per stick.  
46 sticks per pack.

**Ligatures**  
0.120 Diameter

**Elastomeric Chain - 15ft spool, 0.026" (0.66mm thickness)**

		Continuous	Short	Long	
					
	Maroon	UGHF199	UGHF234	UGHF301	UGHF267
	Neon Green	UGHF203	UGHF238	UGHF304	UGHF271
	Pearl Green	UGHF206	UGHF241	UGHF307	UGHF274
	Turquoise	UGHF217	UGHF251	UGHF318	UGHF285
	Green	UGHF194	UGHF229	UGHF296	UGHF262
	Transparent Green	UGHF216	UGHF250	UGHF317	UGHF284
	Light Sky Blue	UGHF197	UGHF232	UGHF299	UGHF265
	Glow Blue	UGHF192	UGHF227	UGHF294	UGHF260
	Royal Blue	UGHF210	UGHF245	UGHF312	UGHF278
	Deep Sky Blue	UGHF188	UGHF223	UGHF290	UGHF256
	Metallic Blue	UGHF200	UGHF235	UGHF302	UGHF268
	Navy Blue	UGHF202	UGHF237	UGHF304	UGHF270
	Metallic Silver	UGHF214	UGHF248	UGHF315	UGHF282
	Smoke	UGHF213	UGHF247	UGHF314	UGHF280
	Grey	UGHF196	UGHF231	UGHF298	UGHF264
	Black	UGHF186	UGHF221	UGHF288	UGHF254

**solventum**  
**AlastiK™**



Alastik with a bite bumper to reduce tooth contact of ceramic brackets on upper incisor teeth. Latex Free 0.124" (3.1mm). Outer Diameter.

Clear	10 discs per pack	<b>Code:</b> U3M0020
Silver	10 discs per pack	<b>Code:</b> U3M0021

**DENTAURUM**  
**Dentalastics Separators**



Blue for Posteriors. For quick and easy separation of teeth. Radiopaque. Inner diameter 2.1mm. Latex free.

Blue	Pack 1000	<b>Code:</b> UWDS000
------	-----------	----------------------

**FLEX Select**  
**Elastic Separators With Stops**



Safe-Seps Elastomeric Separators, Regular Blue. Latex free.

Blue	Pack 1000	<b>Code:</b> UPRO009
------	-----------	----------------------

**FLEX Select**  
**Threads and Tubing**



Elastic Power Threads and Tubing are medical grade elastomers precisely extruded for use in rotations and traction applications. Tubing compresses to minimise slippage when knotted. Latex free.

**25 ft spool (7,62m).**

	<b>Hollow 0.025" (0.64mm)</b>	<b>0.030" (0.76mm)</b>
Clear	UGHF444	-
Grey	UGHF445	-
<b>Slip-Not 0.025" (0.64mm)</b>		<b>0.030" (0.76mm)</b>
Clear	UGHF451	UGHF452
Grey	UGHF453	UGHF454
<b>Solid 0.025" (0.64mm)</b>		<b>0.030" (0.76mm)</b>
Clear	UGHF455	-
Grey	UGHF456	-

**RMO**  
**Morita Power Chain**

- Energy Chain™
- Superior elastic memory following initial stretch
- Latex Free
- Manufactured using special elastomeric materials exclusive to RMO
- Spacing variation between modules allows proper selection, retraction, ligating, etc.



<b>Clear</b>		
Morita Power Chain	Closed	<b>Code:</b> UEUR001
Morita Power Chain	Medium	<b>Code:</b> UEUR002
Morita Power Chain	Large	<b>Code:</b> UEUR003
<b>Grey</b>		
Morita Power Chain	Closed	<b>Code:</b> UEUR004
Morita Power Chain	Medium	<b>Code:</b> UEUR005
Morita Power Chain	Large	<b>Code:</b> UEUR006

**ORTHO CARE**  
**Dura-Chain**

Dura-Chain has the ability to 'stay the pace' up to three times longer than other elastic chains, and remain continuously active in the mouth, providing faster, more efficient tooth movement. Latex free.



Dura-Chain Blue Close Link	Close	<b>Code:</b> UORC117
Dura-Chain Yellow Medium Link	Medium	<b>Code:</b> UORC118
Dura-Chain Red Wide Link	Wide	<b>Code:</b> UORC119





**Intra-Oral Elastics**



- Clear and simple sizing:
- Available in the most popular sizes: 1/8", 3/16", 1/4", 5/16", 3/8"
- Light, Medium, Heavy & X Heavy
- Natural amber colour
- 3 year shelf-life on all elastics
- Available in latex free
- Foil outer bag.



50 bags per pack each containing 100 elastics

Actual Size	Dimensional Size	Size ID	Force Values			
			Light 2.5 oz Red	Medium 3.5 oz Red	Heavy 4.5 oz Blue	X Heavy 6.5 oz Black
○	1/8" 3.2mm	A	Red A UREL055	Green A UREL056	Blue A UREL057	Black A UREL046
○	3/16" 4.8mm	B	Red B UREL059	Green B UREL060	Blue B UREL061	Black B UREL062
○	1/4" 6.4mm	C	Red C UREL053	Green C UREL054	Blue C UREL044	Black C UREL046
○	5/16" 7.9mm	D	Red D UREL067	Green D UREL068	Blue D UREL069	Black D UREL070
○	3/8" 9.5mm	E	Red E UREL063	Green E UREL064	Blue E UREL065	Black E UREL066

Actual Size	Dimensional Size	Size ID	Force Values			
			Light 2.5 oz Red	Medium 3.5 oz Red	Heavy 4.5 oz Blue	X Heavy 6.5 oz Black
○	1/8" 3.2mm <b>LATEX FREE*</b>	A	Red A UREL113	Green A UREL114	Blue A UREL115	-
○	3/16" 4.8mm <b>LATEX FREE*</b>	B	Red B UREL116	Green B UREL117	Blue B UREL118	-
○	1/4" 6.4mm <b>LATEX FREE*</b>	C	Red C UREL110	Green C UREL111	Blue C UREL112	-
○	5/16" 7.9mm <b>LATEX FREE*</b>	D	Red D UREL122	Green D UREL123	Blue D UREL124	-
○	3/8" 9.5mm <b>LATEX FREE*</b>	E	Red E UREL119	Green E UREL120	Blue E UREL125	-

\*Latex Free have a lower stretch than latex elastics. We recommend you use a higher diameter elastic to alleviate snapping.

# Wire Products

## BUTTONS STOPS & HOOKS



Bondable Contoured Lingual Micro-Buttons Hexagonal



Bondable Button Round



Direct Bond Eyelets



### Buttons Stops & Hooks

Pack 10.

Bondable Contoured Lingual Micro-Buttons Hexagonal	<b>Code:</b> UGHF425
Bondable Button Round	<b>Code:</b> UGHF426
Direct Bond Eyelets	<b>Code:</b> UGHF446



### Lingual Button

Pack 10.

Flat Lingual	<b>Code:</b> UPRO012
Curved Lingual	<b>Code:</b> UPRO010
Flat Lingual Nickel Free	<b>Code:</b> UPRO011



### Gripper Stop



Pack 100.

Securely grips to any Ortho wire dimension up to .022" x .028".

<b>Code:</b> UGHF463
----------------------



Pack 10.

Square Composite Button	<b>Code:</b> UPRO008
-------------------------	----------------------



### Gripper Hook



Pack 20.

Gripper Etched Crimpable Split Hook Small.

<b>Code:</b> UGHF464
----------------------

Securely grips to any Ortho wire dimension up to .022" x .028"



Pack 10.

Freddy Ceramic Button	<b>Code:</b> UGSC001
-----------------------	----------------------



Pack 10.

Freddy Hook	<b>Code:</b> UGSC002
-------------	----------------------



### Poly-Clear Buttons

- Ultra Clear Plastic Buttons
- Super Low Profile
- Excellent for Aligner Treatment.

Shape	Code	Pack
Oval	UMA0010	10
Round	UMA0011	10
Trapezoidal	UMA0012	10



### Bondable Button Gold

- Smooth
- Low Profile
- Contoured Base for a Snug Fit
- 80 gauge Mesh. Gold Plated.

Shape	Code	Pack
Rectangular	UMA0014	5
Round	UMA0015	5



### Bondable Eyelet

- 80 grade mesh, low profile, extreme comfort.

Shape	Code	Pack
Tooth Coloured	UMA0013	10
Metal	UMA0114	10



### Magic Stops

- Grips onto any archwire size
- Stops archwires sliding and causing wire pokes
- Used to activate coil springs
- Crimpable Stops.

Colour	Code	Pack
24k Gold Plated	UMA0001	10
Silver	UMA0002	100



### Crimpable Ball Hooks

- Once crimped, these hooks remain insitu
- Designed to work with any type or size of wire from Niti to Stainless Steel.

Colour	Code	Pack
Short	UMA0004	50
Short Gold	UMA0005	10
Tooth Coloured	UMA0006	10



### Zero-Bend Crimping Plier

- Crimp all Hooks and Stops
- Stainless Steel
- A super versatile plier
- Autoclavable.

Size	Code
Short Handled	UMA0036
Long Handled	UMA0035

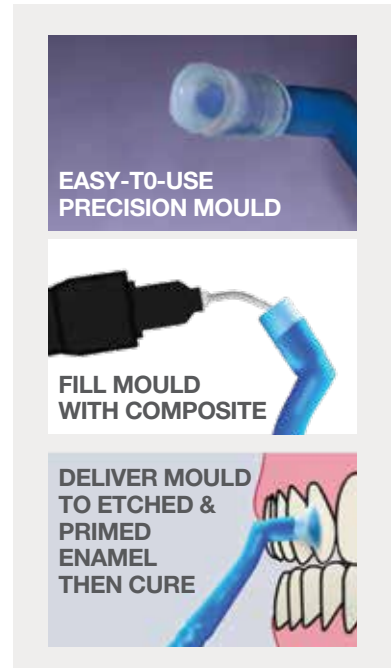
A great alternative to Mini Mold



New



Reliamold Starter Kit



Mould Composite Auxiliaries Directly on Teeth. ReliaMolds are translucent and flexible to facilitate composite loading, curing, and disengagement.

- Value priced to be single-use disposable.
- A mould is filled with a light cure composite (GoTo, TKO, or Flowtaint recommended) then delivered to the tooth and cured. The desired auxiliary is delivered, formed and functional immediately.



108 individual single-patient silicone moulds (12 per type, 9 types), 2 brush handles.

Kit contains:

- Habit Control
- Cupid Ramp
- Button Hook
- Molar Tube
- Molar Pad
- Bite Ramp 3mm
- Bite Ramp 5mm
- Wire Bonder 3mm
- Wire Bonder 4.5mm
- Brush Handle Assorted
- ReliaMold Kit Box

Code: UREL023

DIFFERENT MOULDS FOR DIFFERENT APPLICATIONS



Reliamold Bite Ramp Attachment

Forms a ramped extrusion normally applied to upper central lingual surfaces. Sometimes called turbos. Lower anteriors contact the ramps and create intrusive forces. Posteriors cannot fully occlude and extrusion occurs, thus bite opening results.

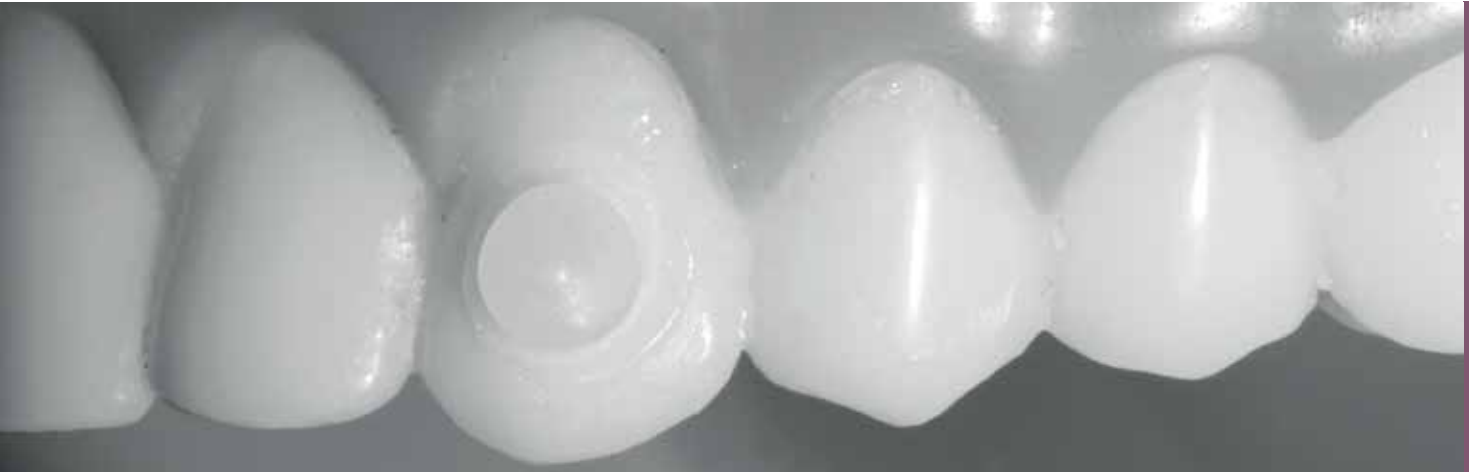
Pack 25	3mm	Code: UREL073
Pack 25	5mm	Code: UREL074



Reliamold Button Attachment

Creates a low profile, smooth button for engagement of intra-oral elastics, elastomeric chain and ligatures.

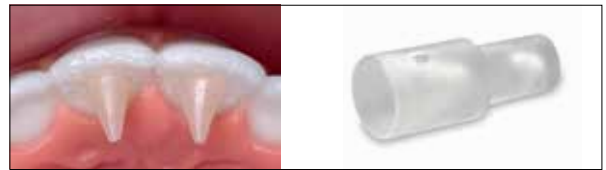
Pack 25	Code: UREL024
---------	---------------



**Reliamold Cuspid Attachment**

Forms a rounded, aesthetic extrusion. Diverts direct opposing enamel contact to open the bite and/or functionally influence crossbite.

Pack 25      **Code:** UREL075



**Reliamold Habit Attachment**

Controls tendencies like thumb sucking and tongue thrust. Moulded extensions contact the tongue or thumb as a gentle intraoral reminder. Clinically as effective as metal rake or crib designs.

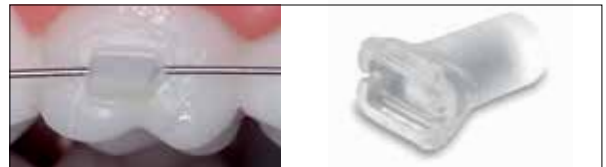
Pack 25      **Code:** UREL076



**Reliamold Molar Pad Attachment**

Creates a precise rounded build-up attached to occlusal of molar cusps. Opposing arch contact intrudes the posterior. TKO composite or Ultra Band Lok cement recommended.

Pack 25      **Code:** UREL025



**Reliamold Tube Attachment**

Casts a low profile round resin 020" tube. Effective for many applications including guiding erupting molars or aiding in levelling.

Pack 25      **Code:** UREL077



**Reliamold Wire Bonder Attachment**

Bonds wire consistently with a smooth, low profile finish. A precise spherical resin mound is formed over a wire. Common application is with fixed bonded retainers but also effective for minor rotation and levelling.



Pack 25    **3mm**      **Code:** UREL079  
 Pack 25    **4.5mm**      **Code:** UREL078





## GESTENCO BITE-BUMPER™

### Open deep bite without trauma

Bite-Bumpers\* work in deep bite cases by allowing the anteriors to ride up and out of occlusion. The BiteBumpers eliminate bond failures of brackets and are especially valuable with ceramic or self-ligating brackets.

The unique fixed placement-jig guarantees the correct height on the lingual of the tooth and makes sure the two Bite-Bumpers are 100 % parallel.

The Bite-Bumpers are made of a composite polymer that is more comfortable, aesthetic and will increase biocompatibility in nickel sensitive patients.

Bite-Bumpers are bonded in the same manner as metal or ceramic brackets. The Bite-Bumpers have a slotted mechanical bonding base.

The placement-jig can easily be removed by hand or cut off after bonding to ensure level Bite-Bumper line up.



\*Patented

### GESTENCO Bite-Bumper

Pack 10

Code: UGSC003



SS short ligature ties

SS long ligature ties

Short Kobayashi hook

Long Kobayashi hook

## FLEX Select

### Stainless Steel Ligature Ties

Short				Long			
		Code	Pack			Code	Pack
.008	Short Ligature Ties	UGHF420	500	.008	Long Ligature Ties	UGHF422	1000
.010	Short Ligature Ties	UGHF421	500	.010	Long Ligature Ties	UGHF423	1000
.012	Short Kobayashi Hooks	UGHF415	100	.012	Long Kobayashi Hook	UGHF418	100
.014	Short Kobayashi Hooks	UGHF416	100	.014	Long Kobayashi Hook	UGHF419	100

### Tooth Coloured Ligatures

Short				Long			
		Code	Pack			Code	Pack
.010	Short Ligature Ties	UMA0027	100	.012	Long Ligature Ties	UGHF424	100





**FLEX Select**

**Nickel Titanium Open Coil Springs**

Wire Size	I.D.	Force	Compressed 25%	Compressed 50%	7" Straight Lengths	21" Spooled
.010"	.030	Light	120g	260g	UGHF441	UGHF431
.012"	.030	Medium	220g	480g	UGHF442	UGHF432
.014"	.030	Heavy	360g	700g	UGHF443	UGHF433
					Pack Size 3	Each

**FLEX Select**

**Nickel Titanium Closed Coil Springs**

Coil Diameter	Force	21" Spooled
.030"	Light	UGHF434
.030"	Medium	UGHF435
.030"	Heavy	UGHF436



**FLEX Select**

**Stainless Steel Coil Spring**

Available in both open and closed coil (dead coil) configurations.

Wire Size	Force	Open/Closed Spring	21" Spooled
.010" x .028"	Light	Open Coil Spring	UGHF437
.010" x .030"	Medium	Open Coil Spring	UGHF438
.010" x .036"	Heavy	Open Coil Spring	UGHF439
.010" x .030"	Medium	Closed Coil Spring	UGHF440



**Elgiloy Open Coil Spring**

Wire Size	24" Spooled
.007" x .028"	UEUR007
.010" x .045"	UEUR008

- Super resilient. 20% more strength than standard S/S
- Heat treated
- Extremely durable
- Precision wound
- Red Elgiloy - Cobalt Chromium - Nickel Molybdenum Alloy.

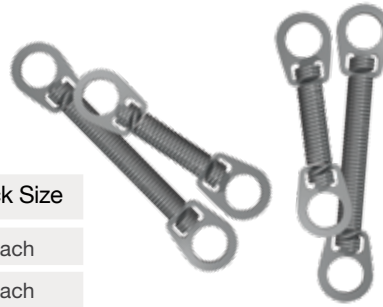




### Niti Coil Spring with Eyelets

Retraction springs. Great for closing spaces.  
All sold individually.

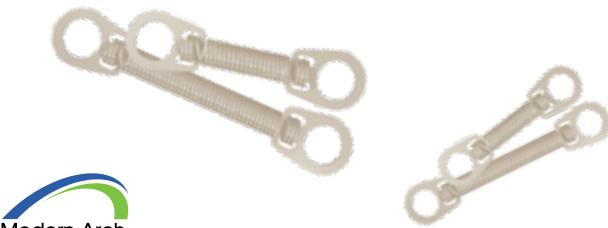
Size	Force	Code	Pack Size
9mm	Light	UMA0016	Each
9mm	Medium	UMA0017	Each
12mm	Light	UMA0018	Each
12mm	Medium	UMA0019	Each



### Niti Coil Spring with Eyelets Tooth Coloured

Retraction springs. Great for closing spaces.

Size	Code	Pack Size
9mm	UMA0020	Each
12mm	UMA0021	Each



### Crimpable Retraction Loop

Closes spaces easily - just crimp at desired location for movement of dentition for retraction and closure. Once crimped cut the archwire between the loop. Use with any archwire. Retraction Loop 7mm x 5mm. All Wire Dimensions.

Size	Code	Pack Size
.016 x .025 - 7 (H) x 5(W) mm	UMA0009	10



Use as a  
space  
maintainer



### Open & Closed Springs Tooth Coloured

Size	Pack Size	Code
Open Spring Niti	Pack of 3	UMA0022
Closed Spring S/S*	Pack of 3	UMA0023

\*use the Closed Coil as an Aesthetic Space Maintainer



### Goodman Torquing Springs

Crimp on .016x.022 to .019x.025 Wires. Applies root or crown torque to a single tooth.

Size	Code	Pack Size
GTS Set (10 Springs & Plier)	UMA0024	10
GTS Small	UMA0025	10
GTS Large	UMA0026	10





### Assure Plus



#### The Most Versatile Resin Ever Developed!

- Enhances bond strength on all surfaces
- Tolerates moisture contamination
- Primes and conditions any tooth surface for bonding
- Effective on any enamel type
- Effective on any artificial substrate
- Eliminates using hydrofluoric acid with porcelain crowns.

#### Clinical Applications

- Normal or atypical enamel
- Dentin or cementum
- Eliminates additional conditioners with:
  - Stainless
  - Composite
  - Amalgam
  - Acrylic
  - Gold
  - Pontics
- Eliminates additional conditioners with:
  - Porcelain
  - Zirconia
  - Lithium Disilicate.



Scan the QR Code: to watch the Reliance University clinic procedures.

6ml Bottle Code: UREL035

Assure Plus



Assure Plus Application



### Assure Universal Resin



- Assure® The Original Universal
- Bonding Resin
- Bonding primer and enhancer
- Typical or atypical enamel
- Metal and composite restorations.

6ml Bottle Code: UREL109



### Porc-Etch and Barrier Gel



Preps porcelain crowns for bonding.

Includes 7g Porc-Etch and 3ml Barrier Gel.

Code: UREL081

## ADHESION BOOSTERS



**RELIANCE**  
**Metal Primer**

For use as a conditioner on metal surfaces for bonding prior to using an adhesive.

8ml Bottle **Code:** UREL082

**RELIANCE**  
**Plastic Conditioner**

An acrylic primer that initiates the bond between appliance and the adhesive.

10ml Bottle **Code:** UREL083

**RELIANCE**  
**Porcelain Conditioner**

A Porcelain conditioner that allows bonding to porcelain & zirconia crowns.

8ml Bottle **Code:** UREL080

## ENAMEL PROTECTIVE SEALANTS



**RELIANCE**  
**Maximum Cure A with fluoride**

Maximum Cure will set in a thin layer. A unique catalyst system prevents oxygen interference during polymerisation. The whole labial or lingual tooth surface can be sealed.

20g **Code:** UREL084

**RELIANCE**  
**Maximum Cure B**

- Self curing - No curing light required.
- 90 Second working time
- Formulated with a patented fluoride monomer
- Excellent molecular conversion rate
- Multiple teeth can be sealed in the time it would take to cure a single tooth with light cure.

20g **Code:** UREL085

**RELIANCE**  
**Light Bond Sealant**

- Bonding primer and sealant  
Light Bond Filled Sealant +Fluoride.

**Light Bond Filled Sealant with Fluoride**

7cc **Code:** UREL091

**Light Bond Economy Sealant with Fluoride**

7cc **Code:** UREL092

**RELIANCE**  
**Light Bond Paste in Push Syringe Non-Fluoride**



**Popular Choice**

Light Bond paste is a light curing bracket adhesive with unrivalled bond strength.

- Highly filled paste
- Smooth tacky viscosity
- Consistent successful bonds
- Easy flash and debonding cleanup
- Routine bracket and tube bonding
- Intraoral bonding of metal, ceramic or composite attachments.

Thin	5g	Push Syringe	<b>Code:</b> UREL087
Regular	5g	Push Syringe	<b>Code:</b> UREL086
Medium	5g	Push Syringe	<b>Code:</b> UREL088





**RELIANCE**

**Light Bond Medium Push Syringe Kit Non-Fluoride**

- 4 x Light Bond Medium Paste 5g Push Syringe Non-Fluoride (LBMPP)
- 2 x Light Bond Regular Sealant 3cc Bottle Non-Fluoride (LBS3)
- 1 x Liquid Etchant 23g (EL24)
- 1 x Accessory Pack.

Non - Fluoride **Code:** UREL090



**RELIANCE**

**Light Bond Regular Push Syringe Kit Non-Fluoride**

- 4 x Light Bond Regular Paste 5g Push Syringe Non-Fluoride (LBPP)
- 2 x Light Bond Regular 3cc Bottle Non-Fluoride (LBS3)
- 1 x Liquid Etchant 23g (EL24)
- 1 x Accessory Pack.

Non - Fluoride **Code:** UREL089



**SMART BOND®**

SmartBond® is a true one step adhesive that bonds in a wet field.

**GESTENCO**

**Adhesive Smart Bond Syringe**

3g Syringe

1g Syringe

3g **Code:** UGSC010

1g **Code:** UGSC011

Activated only when it contacts moisture. Teeth are cleaned and etched for bonding as usual, but when the etchant is rinsed off, the next step is to bond.

- Etch & rinse and then bond
- No drying, no sealants or dry field maintenance
- 5 second working time with a five minute bond set

Use where the bonding environment is difficult:

- Surgically exposed canines, high cuspids or lingually displaced teeth
- Bonds metal, ceramic & plastic attachments
- Use with surgical eruption chains.



**RELIANCE**

**1st and Final**

- Pre packed ortho pumice for polishing enamel
- No added chemicals, no flavouring, fluoride or oils.

Pack 200 **Code:** UREL102

**RELIANCE**  
**GO TO®**

**LIGHT CURE BRACKET ADHESIVE**



Go To is a light cure adhesive with superior handling properties. It does not allow bracket flotation once placed on the tooth or during flash removal. A fraction of the retail cost of the leading, competitive light cure paste!

- Proven bond strength and consistency
- Unique viscosity easily penetrates bracket pads
- No bracket drift – stays in place until cured
- New proprietary microfiller construction
- One piece flash removal – “ropes” off bracket periphery
- Translucent finish matches any tooth shade
- Maximum bond strength
- Easy removal and cleanup.

**Clinical Applications**

- Bracket and tube bonding
- Fixed lingual retainer bonding
- Bonds all metal, ceramic and composite attachments
- UV disclosing agent – fluoresces.



**RELIANCE**

**Go To**

Paste Syringe

4g **Code: UREL036**

**New** Adhesive Colour Changing

Syringe 4g **Code: UREL128**

Paste In Tips

Pack 10 **Code: UREL037**



Excess adhesive ropes off in a single piece from the periphery of the bracket.



Blacklight fluorescent

**RELIANCE**

**Ultra SEP First Ever Orthodontic No Mix Self Etch Primer (SEP)**

Reliance Ultra S.E.P. features a single liquid application – making effective tooth preparation quick, simple, and error-free.

- Effective and Efficient Tooth Prep
- Reduces Chair Time with Simplified

**Process**

- Scrub onto enamel for 5 sec
- Air dry
- Apply Assure Plus (optional)
- Air Dry
- Deliver Bracket and Cure.



6ml Bottle **Code: UREL093**

- Single Liquid Application - No Mixing
- Great for both initial bonding and emergency repair appointments
- Effective for all enamel surfaces
  - Bracket and Tube Bonding
  - Build-ups
  - Increasing band cement retention
  - Attachment delivery.



100 x Ringwells **Code: UREL094**



# ULTRA BAND-LOK®

LIGHT CURE COMPOMER BAND CEMENT



Industry Leader in Band Cement.



Occlusal build-up.



Bonds to metal - removes with the appliance at deband.

- Single paste system
- Light activated
- Resin base glass ionomer. High Fluoride Release.
- Bonds to metal. Will also Chemically Bond to Stainless Steel Bands.

### Effortless Clean up

- All purpose cement. Can be used to bond large acrylic appliances and as an occlusal build-up material.

### Build Up material

- Ultra Band-Lok is available in Blue or Natural shade, with or without fluoride.



## ULTRA BAND-LOK®

**Blue** - Fluoride Free

5g **Code:** UREL095

**Blue** - With Fluoride

5g **Code:** UREL098

**Natural** - Fluoride Free

5g **Code:** UREL096

**Natural** - With Fluoride

5g **Code:** UREL097



# PAD LOCK®

LIGHT CURE FLUORESCING ADHESIVE



- Pad Lock - Light Cure Fluorescing Adhesive
- Bonds Chemically and Mechanically
- Bonds chemically to metal bases
- Paste fluoresces under black light for flash and debonding clean-up

### Clinical Applications:

Metal bracket and tube bonds Indicated for fine grade mesh bases.

Paste in Push Syringe with Fluoride

4.5g **Code:** UREL099



## Bond Aligner Adhesive with Tips

Bonds attachments to clear aligners.

- Secure aesthetic bonds
- Bond to any clear aligner material
- No primers or conditioners
- Clear light cure paste
- High modulus of elasticity
- Conforms to aligner distortions
- Secure bonds throughout
- Bond ceramic, metal or plastic attachments.



1 x 1.4gm Syringe +10 Tips

**Code:** UREL038

# Fuji ORTHO

GC Fuji ORTHO LC is a light-cured, resin reinforced glass ionomer ideally suited for bonding orthodontic brackets, bands and appliances.

Its ability to be placed in the presence of moisture with no need for phosphoric acid etching simplifies the bonding procedure.

Its unique formulation helps to reduce the risk of decalcification, which helps maintain the soundness of enamel.

Additionally, debonding can be accomplished faster with less risk of damaging the enamel than with composite resin bonding systems.



**Fuji Ortho LC Intro Kit**

Kit **Code:** UFOK000



**Fuji Ortho LC Capsules**

Box 50 **Code:** UFOC000



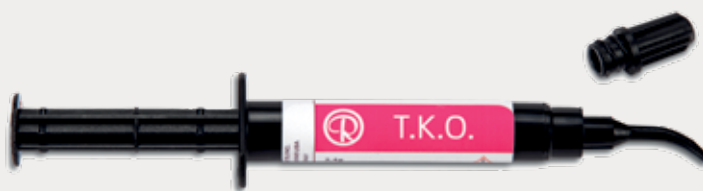
**Fuji Ortho LC Liquid**

6.8ml **Code:** UFOL000



**Fuji Ortho LC Powder**

40g **Code:** UFOP000



## Composite Bite Turbo Gel Pink

**Looking for a Triad substitute? Reliance is excited to introduce T.K.O.!**

- Quick light cure acrylic repair
- Gentle impact Resin Matrix (great for occlusal build ups)
- Needle tip dispensing for accurate and ergonomic placement
- Used in both lab and chairside settings

Pink	Syringe 3.4g	<b>Code:</b> UREL047
Clear	Syringe 3.4g	<b>Code:</b> UREL127

- Will not wear opposing tooth structure. Relatively easy to remove at the end of treatment
- Pink shade to contrast enamel
- Contains one 3.4g TKO syringe with 5 tips
- Clear for Aesthetics.



**C&C Composite and Chain System**

**Unparalleled Strength.**

The C&C System does not use protruding metal attachments. Our patent pending design moulds a base with composite – adapting flush to any palatal or buccal exposure.

**Painless Removal.**

Instead of painfully breaking a bracket off a mobile tooth, the C&C is ground down with a bur – resulting in less patient discomfort.

Our patent pending design moulds a base with composite - adapting flush to any palatal or buccal exposure.

**Includes 1 Disposable C&C Round Attachment with Chain**

1 x Silicone Mould with Gold Chain, 1 x Handle  
1.7mm Height, 4.1mm Diameter.

**Code:** UREL071

**Includes 1 Disposable C&C Oval Attachment with Chain**

1 x Silicone Mould with Gold Chain, 1 x Handle  
1.4mm Height, 2.4mm x 3.6mm Diameter.

**Code:** UREL072

**C&C™**



**FILL MOULD WITH FLOWABLE COMPOSITE**



**DELIVER C&C™ MOULD TO ENAMEL & CURE**

**INSTRUCTIONS FOR USE:**

1. Prophyl the enamel surface. Rinse and dry. Acid etch the enamel for 30 seconds, rinse and dry.
2. Apply one coat of Assure® Plus. Lightly air dry.
3. Fill the mould to the top edge with paste ensuring the chain is covered. Do not overfill form.
4. Quickly place the loaded form on the conditioned, exposed tooth surface.
5. Light cure per manufacturer instructions. Gently remove mould from polymerized composite.
6. Surgically close the site, as necessary, attaching the gold chain to the appropriate tooth.



Scan the QR Code for all Reliance University clinical procedures.

**GESTAMP**

**Gold Extrusion Hook Eyelet and Chain**

- 24Kt Gold plated extrusion chains designed for bonding to surgically exposed canines.
- Low Profile.
- Chain is 1 inch in length with approx 20 x 022” links.
- Autoclavable and compliant with NHS CSSD.



**Code:** UGSC012



**Code:** UGSC014

**Code:** UGSC013



**Code:** UGSC015

Surgical Eruption





Full Range of IPR  
Materials available in the  
**Aligner Solutions Catalogue**



**SCAN THE QR  
CODE TO  
VIEW ONLINE**

IPR



### Diamond Finishing Strips - Perforated - Single Sided

Gain space by gently contouring the sides of the overlapping teeth.  
Made of high grade Stainless Steel to resist breaking and stretching.  
Autoclavable. Available in a variety of widths and grain.



#### Perforated Pack 10

Colour	Width	Grain	Thickness	Code
Extra Fine	3.75mm	15µm	0,08mm	UEDFS18
Fine	3.75mm	30µm	0,10mm	UEDFS17
Medium	3.75mm	45µm	0,13mm	UEDFS16

#### Perforated Pack 10

Colour	Width	Grain	Thickness	Code
Extra Fine	2.5mm	15µm	0,08mm	UEDFS12
Fine	2.5mm	30µm	0,10mm	UEDFS13
Medium	2.5mm	45µm	0,13mm	UEDFS11



Komet

### Vision Flex Diamond Strips

These Strips have a more dead-soft quality than the typical springy feel of conventional diamond strips.

#### Pack 10 - Length 147mm

Colour	Width	Grain	Thickness	Code
Extra Fine	3.75mm	15µm	0.08mm	UVFW37E
Fine	3.75mm	30µm	0.10mm	UVFW37F
Medium	3.75mm	45µm	0.13mm	UVFWS37

#### Assorted Pack 15

Contains: 5 x medium (45µm), 5 x fine (30µm) and 5 x extra-fine (15µm).

Assorted 3.75mm **Code: UVFW37A**



Code: UEDS04K  
PDL-4 KIT 4mm



Code: UEDS25K  
PDL-2.5 KIT 2.5mm

IPR

### EVE Diastrips

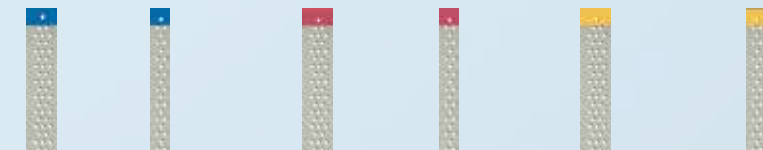
Diastrips (Porcelain, Composite, Metal, Enamel).

- For manual surface processing
- Interdental application
- Perforation removes the cut material.



**1** Coarse **2** Medium **3** Fine

**Kits Contain:** 3 x of each grit (fine, medium and coarse) in the selected size of 2.5mm or 4mm widths.



Dimensions (mm)	Thickness (mm)	Code
4 x 150	0.11	UEDS454
2.5 x 150	0.11	UEDS452
4 x 150	0.10	UEDS354
2.5 x 150	0.10	UEDS352
4 x 150	0.07	UEDS104
2.5 x 150	0.07	UEDS102

### FLEX Select Lightning Strips Medium



Size	Single Sided	Pack	Code	Size	Double Sided	Pack	Code
4mm	Single Sided	12	UGHF457	4mm	Double Sided	12	UGHF460
6mm	Single Sided	12	UGHF458	6mm	Double Sided	12	UGHF461
8mm	Single Sided	12	UGHF459	8mm	Double Sided	12	UGHF462



### Garrison FitStrip Starter Kit

FitStrips are your complete line of interproximal trimmers and finishers! FitStrip™ is indicated for composite restorations (contouring/finishing all interproximal surfaces), orthodontics (IPR/tooth slenderizing), and crown and bridge (cement removal and clean-up).

**Starter Kit Includes:**

- 2 x Serrated Strip (0.05mm)
- Single Sided**
- 1 x Super Fine Grit Strip (0.08mm)
- 1 x Fine Grit Strip (0.10mm)
- 1 x Medium Grit Strip (0.13mm)
- 1 x Coarse Grit Strip (0.18mm)

**Double Sided**

- 1 x Super Fine Grit Strip (0.11mm)
- 1 x Fine Grit Strip (0.15mm)
- 1 x Medium Grit Strip (0.21mm)
- 1 x Coarse Grit Strip (0.30mm)
- 2 x FitStrip Handles.

Starter Kit Code: UFPSK01



Superfine



Fine



Medium



Coarse



X-Coarse



### QwikStrip Ultimate Assorted Kit

- Industry Leading Qwik Strips.
- Easy to follow IPR sequence
  - Interproximal cement removal
  - Use for any aligner regime
  - Double or Single Sided
  - Autoclavable.

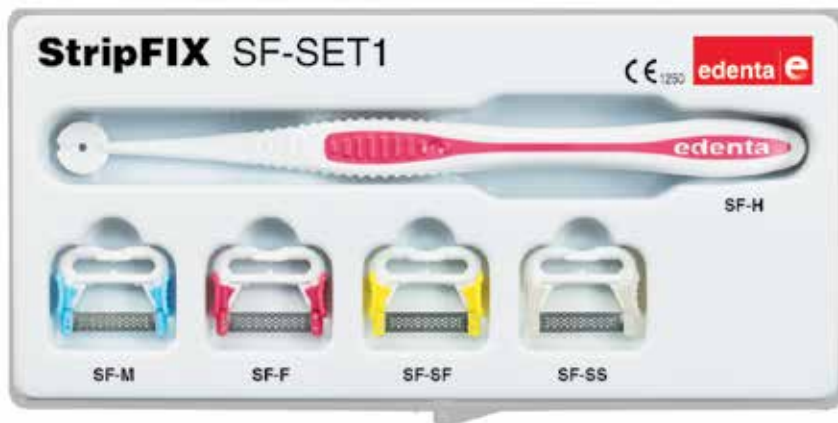


Scan the QR Code: to watch a QwikStrip IPR Demonstration.

**Kit Contains:**

- 5 x Single-sided (.07mm - .18mm)
- 5 x Double-sided (.18mm - .40mm)

Code: UQWKS01



### StripFix Finishing Strip System

StripFIX finishing strip system Manual Diamond Strip Holders. Use with or without the handle. Hold between middle finger with your index finger on the diamond strip plate. Strip holder is swivel mounted. May be locked in 4 positions for optimal access to the oral cavity. Simple quick-plug system to hold the strip. All components autoclavable.

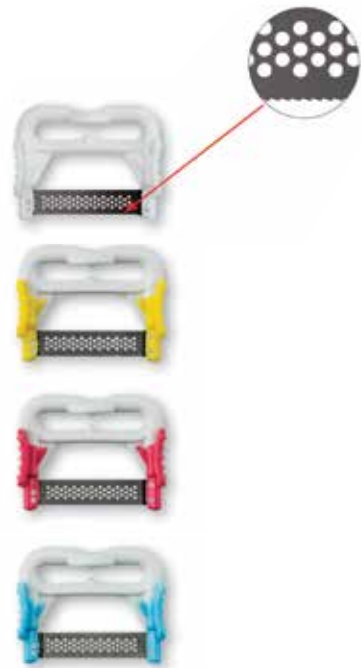
**Pack contains:**

- 1 x .04mm Serrated Edge
- 1 x .08mm Super Fine
- 1 x .10mm Fine
- 1 x .13mm medium

Pack of 4 Files and Handle      **Code:** USFX000

#### Refills - Single-Sided

White Serrated Edge .04mm	<b>Pack</b> 10	<b>Code:</b> USFX001
Yellow Super Fine .08mm	<b>Pack</b> 10	<b>Code:</b> USFX002
Red Fine .10mm	<b>Pack</b> 10	<b>Code:</b> USFX003
Blue Medium .13mm	<b>Pack</b> 10	<b>Code:</b> USFX004
2 x Handles .13mm	<b>Pack</b> 2	<b>Code:</b> USFX005







### Swingle Handpiece

W&H Synea 2:1 Reciprocating Handpiece.

Swingle Handpiece without light **Code:** UITV048

Swingle Handpiece with light **Code:** UITV049



### Intensiv OST400 Set 01/2

Thanks to the diamond coating in the central operating area, the Intensiv Ortho-Strips System Central allows for high precision in approximal reduction, finishing and polishing of enamel, respecting the tooth morphology and dental tissue.

During the process of enamel reduction, trimming and polishing in orthodontics, parts of enamel or dentine below the tooth margin may be removed unintentionally, which may cause subsequent hypersensitivity of the tooth in the patient.

**Contains:**

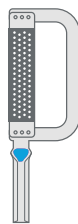
- 1 x Ortho-Strips Tray

- Ortho-Strips system central double sided:**
- 1 x Serrated Opener
  - 2 x Contouring
  - 1 x Reduction
  - 1 x Finishing
  - 1 x Polishing

Kit **Code:** UITV050



Orange **Code:** UITV028



Blue **Code:** UITV045



Brown **Code:** UITV025



Red **Code:** UITV037



White **Code:** UITV019



Yellow **Code:** UITV016





**Pop On Diamond Finishing Discs  
Double Sided**

Double sided 0.10mm thick.  
Diamond Coated. Each.

10mm	Each	<b>Code:</b> UKMT001
14mm	Each	<b>Code:</b> UKMT002
18mm	Each	<b>Code:</b> UKMT003
Mandrel	Each	<b>Code:</b> UKMT004



**Komet DISCtance IPR system kit**

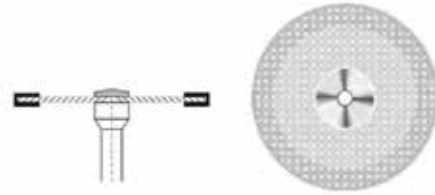
Rotary diamond discs for interproximal enamel reduction.

The Komet DISCtance IPR system features a range of new, sharp stripping discs that ensure the amount of enamel is easily, efficiently and precisely removed. All discs are mounted on a straight handpiece shank. Fully autoclavable bur holder.

**Comes with 5 new discs:**

Ref:	Grit	Thickness	Coated on	Codes
RS15FV	Fine	0.15mm	Upper side	UWES001
RS15FH	Fine	0.15mm	Bottom side	UWES002
RS15F	Fine	0.15mm	Both sides	UWES003
RS20M	Medium	0.20mm	Both sides	UWES004
RS30M	Medium	0.30mm	Both sides	UWES005

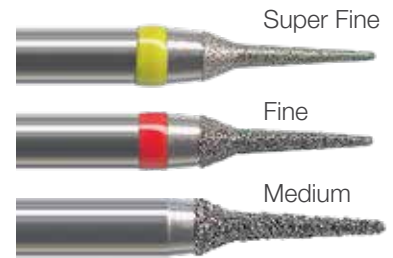
**Code:** UKMT005



**Superflex  
Diamond Open Mesh Disc**

Superflex Diamond Open Meshed Disc  
Double Sided 22mm Diameter, 0.15mm Thickness.

22mm Diameter	Each	<b>Code:</b> USFDO22
---------------	------	----------------------



**IPR Diamond Bur**

IPR Diamond Bur. Pack 5.

**392 Series**

Super Fine	<b>Code:</b> UEI392S
Fine	<b>Code:</b> UEI392F
Medium	<b>Code:</b> UEI392M



**Komet**

**Orthodontic IPR Kit**

**The Komet IPR & Disc kit contains:**

- Vision Flex Strips
- 3x WS37 .13mm 45µm Blue Medium
- 3x WS37F .10 mm 30µm Red Fine
- 3x WS37EF .08 mm 15µm Yellow Extra Fine
- 3x DS37D .21mm 45µm Blue Medium Double Sided
- 3x DS37C .18mm 90µm Green Coarse Single Sided
- 1x 934.104.180 Diamond Disc .18mm 18mm Diameter
- 1x 8934A.900.180 .15mm 14mm Diameter
- 1x Contra Angle Mandrel
- 1x De-Bonding Bur
- 1x H379AGK Egg De-Bonding Bur
- Non-autoclavable storage box

**Code:** UKMT006



Small Cone	Large Cone	Cup	Disc	Cone Fine
3 x 7,5	5 x 10	5,5 x 8,5	10 x 0,7	2.35 x 9
BRP11	BRP7	BRP3	BRP6	PC-100



**Debonding Kit**

Kit RA 431 Contains: BRP-11, BRP-7, BRP-3, BRP-6, PC-100.

**Code:** UBPS431      **Each**



**Bracket Plus Remover**

Small Cone	<b>Code:</b> UBPS110	<b>Pack 10</b>
Small Cone	<b>Code:</b> UBPS111	<b>Pack 100</b>
Large Cone	<b>Code:</b> UBPS070	<b>Pack 10</b>
Large Cone	<b>Code:</b> UBPS071	<b>Pack 100</b>
Cup	<b>Code:</b> UBPS030	<b>Pack 10</b>
Cup	<b>Code:</b> UBPS031	<b>Pack 100</b>
Disc	<b>Code:</b> UBPS060	<b>Pack 10</b>
Disc	<b>Code:</b> UBPS061	<b>Pack 100</b>
Cone Fine	<b>Code:</b> UEPCFCS	<b>Pack 1</b>
Cone Fine	<b>Code:</b> UEPCFCT	<b>Pack 10</b>

Debonding Burs come in a range of Flute's from 8 to 18. Normally tapered fissure safe ended but also available in round and egg shapes.

	RA	FG	Round	Fluted	Brand	Code	Pack Size	Pattern
	✓		✓		 Perfection Plus	UTRRS06	Each	7006
		✓	✓		 Perfection Plus	UTFRS06		7006
		✓		8	 Perfection Plus	UFB1171	Each	1171
	✓			8	 PRIMA DENTAL	USW72RA	Pack 10	1172
		✓		8	 PRIMA DENTAL	USW72FG	Pack 10	1172
	✓			12	 edenta	EDNT0615	Pack 5	Egg Bur
		✓		18	 RELIANCE	UREL103	Each	118S
		✓		18	 RELIANCE	UREL105	Each	118L
		✓		18	 RELIANCE	UREL104	Each	218S

RELIANCE  
**Ortho Flextech**

**Popular Choice**

- Flexible lingual retainer.
- Secure and stable long term passive retention.
- Adapts to lingual anatomy. Will take an active bend.
- Low profile for patient comfort.
- Stainless Steel offers increased tensile and torsional strength.
- Chairside application.



Stainless Steel Etched	<b>Code:</b> UREL030
Stainless Steel Non Etched	<b>Code:</b> UREL048
14kt White Gold Etched	<b>Code:</b> UREL031
14kt White Gold Non Etched	<b>Code:</b> UREL032
14kt White Gold Nickel Free	<b>Code:</b> UREL033



Scan the QR Code: to watch the Reliance University clinic procedures.

RELIANCE  
**Bond-A-Braid Lingual Retainer Wire**



The dead soft wire easily adapts and is excellent for semi-permanent orthodontic splinting of the upper and lower incisors, diastema maintenance and fixed retention.

- Lingual retainer
- .027" x .011" ribbon arch
- 8-strand braided wire
- Each tube contains 10 (6") wires.

Pack 10      **Code:** UREL034

RELIANCE  
**Retainium**



- Flexes Interproximally
- Lowest profile
- Flat .027" x .011" ribbon arch
- Adaptability
- MRI compatible
- Titanium Molybdenum Alloy
- Nickel Free.

Pack 10      **Code:** UREL049

RELIANCE  
**Retainium XL**



- Flat .027" x .016" ribbon arch
- Low profile – comfortable and functional
- Increased strength
- MRI compatible
- Titanium Molybdenum Alloy
- Nickel Free.

Pack 10      **Code:** UREL050



### Flattened Retainer Wire

Stainless Steel Flattened Twisted Retainer Wire.

Type	Wire Size	Code	Pack Size
Spool	Wire size .010 x .028	UMA0030	Each
Straight Lengths	Wire size .010 x .028	UMA0031	Pack of 10
Gold Plated	Wire size .010 x .028	UMA0032	Each
Tooth Coloured	Wire size .010 x .028	UMA0033	Each



### 'GC.' EverStick Ortho

everStick ORTHO is indicated for the aesthetic retention phase after active orthodontic treatment. The resin matrix holds the individual glass fibres in a bundle, which facilitates the handling and adaptation to the arch.

everStick ORTHO offers an aesthetic and cost-effective alternative for the retention phase after active orthodontic treatments.

- High aesthetics thanks to a good blending with the natural tooth structure.
- Easy to adapt directly on the teeth, eliminating the need for study models or second visits.
- Comfortable to wear and easy to clean.
- Completely metal-free, minimising the risk of allergies.
- Excellent bonding to composites thanks to patented IPN structure.

2 x 10cm Strips      **Code:** UES08CM





**Flow Tain with Tips**



The composite is highly polishable which will reduce wear and enhance patient comfort. When cured, has a low modulus of elasticity and is not as brittle as conventional composites.

Even though Flow Tain is a flowable material, the thixotropic properties prevent slumping for better control. Using the tips provided, Flow Tain is easily injected onto lingual surfaces and across fiber splints.

1 x 1.5gm Syringe +10 Tips **Code:** UREL042



**Flow Tain L.V. with Tips**



- Needle Tip Dispenser
- Low Viscosity
- Using tips provided, these materials are easily injected onto custom pads
- Low modulus of elasticity to resist breakage
- Highly filled to bridge gaps between custom pads and tooth surface
- Fluoresces under UV light.

1 x 1.5gm Syringe +10 Tips **Code:** UREL043

**Startflow Flowable Composite (Starflow)**



Startflow is a light-cure, highly filled flowable which is well suited for lingual retainers.

- Radiopaque
- Sub-micron particle size gives superior polishability and resistance to staining
- True Vita shade match
- Non-sticky
- Fluoride slow release and natural fluorescence
- Great wear resistance.

	Code		Code
A1	UEVI003	A2	UEVI001
A3	UEVI004	A3.5	UEVI002
A4	UEVI005	Replacement Tips	UEVI006



**L.C.R. Paste in Push Syringe**

L.C.R. is a flowable, light cure orthodontic adhesive intended to be used within an orthodontic, dental or paediatric dental practice for the bonding of lingual retainers, creation of occlusal build-ups and for retention of thermoplastic aligners.

- 5g L.C.R. Paste in Push Syringe
- Micro+ nano fill for flowable consistency with durability of highly filled composite
- Smooth viscosity
- Cures to a glassy finish
- Patient comfort – reduced wear
- Developed for BLR applications
- No inventory issues. One syringe covers all shades.



1 x 1.5gm Syringe +5 Tips **Code:** UREL040

Preloaded Tips 5g Pack of 11 **Code:** UREL041

# omniCHROMA

Colourless  
Omnichroma...

matches any  
tooth!

Light

Colourless  
Spherical  
Filler

## Ortho Application

- Ideal for use with lingual retention
- Perfect for creating buttons and attachments during aligner treatment

### Flow

Code: TK0326

### F Blocker

Code: TK0325

The F blocker provides a mask against any darker substrate.

## Just One Does It All

Colourless **Omnichroma** is the world's only composite that shades by structural colour. It's unique spherical filler (Smart Chromatic Technology), enables **infinite colour matching** through A1 to D4.

The colour of the surrounding tooth naturally appears in a semi-translucent final shade, creating a **perfect match every time!**

Tokuyama's spherical fillers ensure Omnichroma is unrivalled in **polishability, abrasion resistance** and **natural aesthetics**.

With **faultless shade matching**, Omnichroma is undoubtedly the most advanced composite available.



WORKING TIME: **90 SECONDS**

CURING TIME: **20 SECONDS**

Lingual Retention &  
Flowable Composites

# Lip & Cheek Retractors



## Lip Retractors

Retract EEZ Photo Lip Retractor  
 Provides maximum exposure for occlusal photographs. Angled bend helps retract lips. Smooth rounded edges. Enables assistants to take occlusal photographs while patient retracts their own lips with one hand & holds an intra-oral mirror with the other hand. Can be cold or heat sterilised up to 143°.

Each	<b>Code:</b> UTOC001
------	----------------------



## GESTENCO Lip Retractor

Ideal for occlusal photography as it holds the lips out of the way during photo sessions or bonding. Made of autoclavable plastic.

Child	<b>Code:</b> UGSC006
Adult	<b>Code:</b> UGSC005



## Lip Retractor

Metal photo lip retractor Single End 65mm.

Metal	<b>Code:</b> UNNR016
Black	<b>Code:</b> UNNR017



## Cheek Retractor Nola Dry Field

Full retraction and oral evacuation.

Child	<b>Code:</b> UPRO020
Adult	<b>Code:</b> UPRO019



**DIRECTA**  
**Cheek & Lip Retractor**

Made of autoclavable polycarbonate plastic, the cheek retractor is easy to place & useful for photography, oral surgery, orthodontic bonding & restorative work.

Adult Clear	<b>Code:</b> NGLWA	<b>Pack 2</b>
Child Clear	<b>Code:</b> NGLWCC	<b>Pack 2</b>
Adult Red	<b>Code:</b> NGLWAR	<b>Pack 2</b>
Adult Ivory	<b>Code:</b> NGLWAI	<b>Pack 2</b>
Adult Blue	<b>Code:</b> NGLWAB	<b>Pack 2</b>
Child Red	<b>Code:</b> NGLWCR	<b>Pack 2</b>
Child Ivory	<b>Code:</b> NGLWC	<b>Pack 2</b>
Child Blue	<b>Code:</b> NGLWCB	<b>Pack 2</b>



**HÄGER WERKEN**  
**Mirahold Cheek Retractors**

Transparent and non-reflecting. Autoclavable up to 121°C. Long handles for a free working area and no interference into the photo image.

Child	<b>Code:</b> HGRW0082	<b>Pack 2</b>
Adult	<b>Code:</b> HGRW0081	<b>Pack 2</b>



**RELIANCE**  
**Cheek Retractor with Extension Tabs**

Simple and elegantly engineered, can be chemically or heat sterilised in an autoclave or dry heat sterilised. Separates into three parts, for easy cleaning. Intended for use in pulling the cheeks back from the buccal and labial surfaces of the teeth during orthodontic procedures and in-office whitening.

Child	<b>Code:</b> UREL100	<b>Each</b>
Adult	<b>Code:</b> UREL101	<b>Each</b>



**HÄGER WERKEN**  
**Spandex Cheek and Lip Retractor**

- Soft contoured plastic for optimal patient comfort, “soft touch & feel” makes bond ups a little more tolerable
- Non reflecting plastic
- Autoclavable.

Child	<b>Code:</b> HGRW0489	<b>Pack 2</b>
Adult	<b>Code:</b> HGRW0159	<b>Pack 2</b>



**ivoclar**  
**OptraGate Retractors**

Latex free lip and cheek retractor is comfortable to wear over longer periods of time, as it has three-dimensional flexibility.

Assorted	<b>Code:</b> UOGASST	<b>Pack 80</b>
Regular	<b>Code:</b> UOGR000	<b>Pack 80</b>
Small	<b>Code:</b> UOGS000	<b>Pack 80</b>
Junior	<b>Code:</b> UOGJ000	<b>Pack 80</b>



**GESTENCO**  
**Cheek Retractor with Extension Tabs**

Soft material for patient comfort. Full function design. Includes handles which may be held by the patient. Effective for intra-oral photos as well as bonding. Autoclavable up to 134°C.

Child	<b>Code:</b> UGSC004	<b>Pack 2</b>
-------	----------------------	---------------



# Cheek Retractors



**Metal  
48mm**

150mm. Single ended.

**Code: UNNR010**



**Metal  
45/55mm**

110mm. Double ended.

**Code: UNNR012**



**Metal V Shape  
40/45mm**

170mm. Double ended.

**Code: UNNR014**



**Slim  
28/38mm**

150mm. Double ended.

**Code: UNNR008**



**Metal Titanium  
Coated 48mm**

Black Metal. 105mm. Single ended.

**Code: UNNR011**



**Metal Titanium  
Coated 45/55mm**

Black Metal. 110mm. Double ended.

**Code: UNNR013**



**Metal Titanium  
Coated 40/45mm**

V- shaped. Black Metal. 170mm. Double ended.

**Code: UNNR015**



**Regular  
44/53mm**

160mm. Double ended.

**Code: UNNR009**



# Contrastors



Upper Contrastors

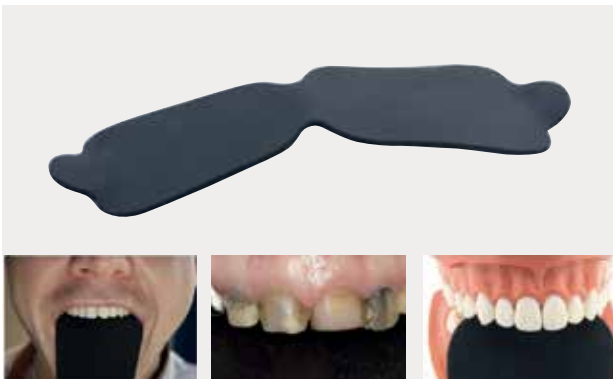
**NICHROMINOX**  
**Palatal Contrastor**

Made from black anodised aluminium gives instant contrast to your conventional and digital photographs, while eliminating unwanted elements. Autoclavable to 134°C.

Palatal	<b>Code:</b> UNCP000	<b>Pair</b>
---------	----------------------	-------------

**NICHROMINOX**

Aluminium Contrastors coated with Silicone. They can be bent to be adapted. Fully autoclavable. Very comfortable for the patient.



**Occlusal Double Ended Silicone**

<b>Code:</b> USCPDE0	<b>Each</b>
----------------------	-------------



**Palatal Silicone Retractor**

Adult	<b>Code:</b> USCPL00	<b>Each</b>
Child	<b>Code:</b> USCPSML	<b>Each</b>



**Double Ended Adult Silicone Contrastor**

Adult	<b>Code:</b> USCUDE0	<b>Each</b>
-------	----------------------	-------------



**Upper Silicone Contrastor**

Adult	<b>Code:</b> USCUL00	<b>Each</b>
-------	----------------------	-------------

# Mirrors

Nichrominox Universal Photo Mirrors are made of float Glass, with a thickness of 3mm. They are front surface coated with pure Titanium. No double image and the glass is perfectly flat giving distortionless images. Mirrors are reversible even for asymmetrical shapes. Sterilised by any process up to 220°.

**NICHROMINOX**

## Palatal/ Occlusal Mirrors



Small **Code:** UPMP SML



Large **Code:** UPMPL00



Extra Large **Code:** UPMPXLO



Lateral C **Code:** UPMLC00



Lateral S **Code:** UPMLSML



Lateral T1 **Code:** UPMLT10



Lingual P **Code:** UPMLP00

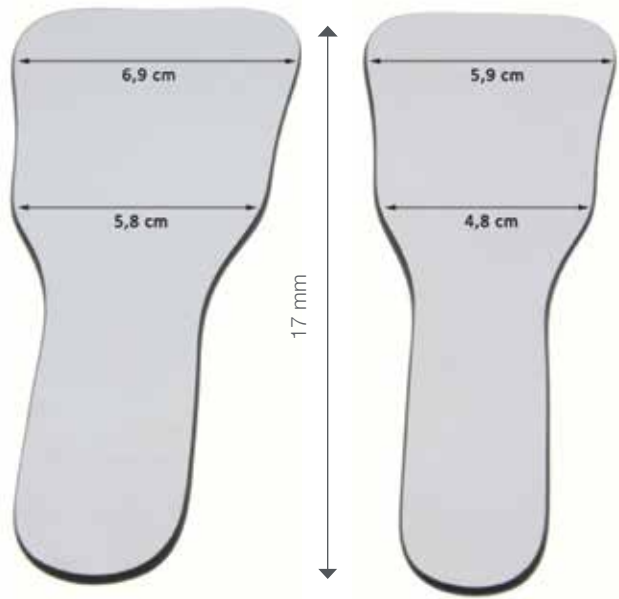


Lingual G **Code:** UPMLG00

€NICHROMINOX

**Universal Photo Mirror**

Small (5.9 x 12.7cm)	<b>Code:</b> UPMLUSM	<b>Each</b>
Large (6.9 x 12.7cm)	<b>Code:</b> UPMUNLG	<b>Each</b>

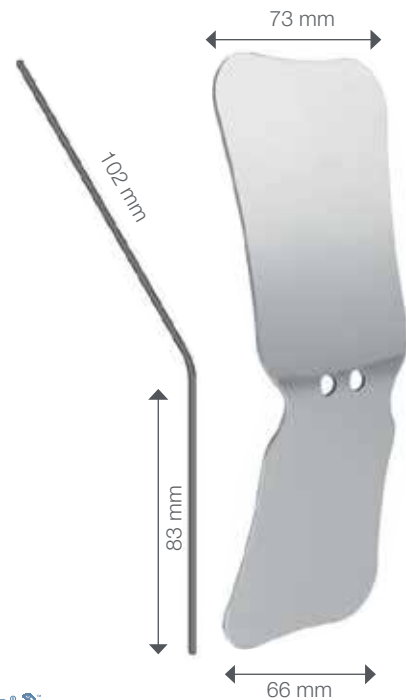


€NICHROMINOX

**Metallic Photo Blade**

Metallic effect. Their specific shape gives very good results. For occlusal photos use the large end. For lingual photos use the small end.

Small	<b>Code:</b> UPBN001	<b>Each</b>
Large	<b>Code:</b> UPBN000	<b>Each</b>



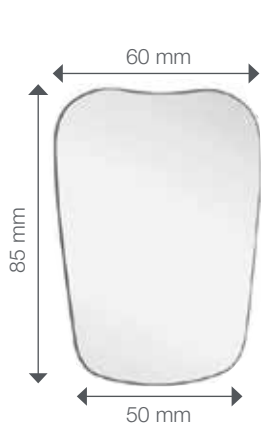
**Intraoral Photographic Mirror Occlusal**

Adult palatal / child palatal. Made of stainless steel. Double sided, provides sharp images. Autoclavable.

<b>Code:</b> UNNR001	<b>Each</b>
----------------------	-------------

# Intraoral Photographic Mirror

- Double sided front surface
- No double reflection.
- Chromium coated glass
- Autoclavable.



## Intraoral Photographic Mirror Child Occlusal

Palatal - Child.

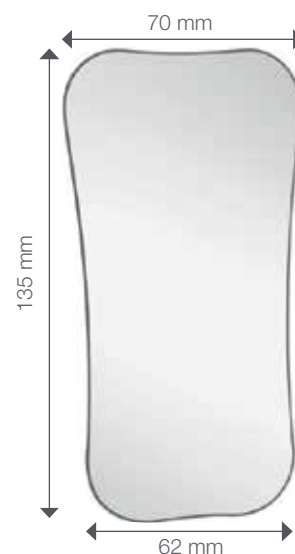
**Code:** UNNR002 **Each**



## Intraoral Photographic Mirror Adult Occlusal

Palatal - Adult.

**Code:** UNNR003 **Each**



## Intraoral Photographic Mirror Adult Occlusal XL

Palatal - Adult Large.

**Code:** UNNR004 **Each**



## Sterilization Cassette for Intraoral Photographic Mirrors

Suitable for all intraoral photographic mirrors.  
180 x 90 x 20 mm.

**Code:** UNNR007 **Each**



## Silicone Photo Mirror Handle

Made from stainless steel coated with teflon silicone, this handle can be bent for ease of use and will hold any photographic mirror. The handle can be placed in an ultrasonic bath, thermal disinfectant and sterilised in an autoclave to 134°C. (Mirror not included).

**Code:** UPMH000 **Each**



**ReliaBites in classic roll and Y-shaped design.**



CLASSIC ROLL DESIGN  
10 Pack's of 2



Y-SHAPED DESIGN  
Pack of 10

ReliaBites improve clear aligner treatment to help patients properly seat aligners, remove air bubbles, and reduce overall treatment time. Available in classic cylindrical rolls or Y-shaped design.

- Food grade elastomer material
- Applies uniform force to properly seat aligners
- Patient controlled forces – bite and seat
- Eliminates “halo” air bubbles in sockets
- Y-shaped available Soft or Firm, in various flavours.

	Flavour	Rolls Code	Y-Shaped Code	Firmness
	Apple	-	UREL008	Soft
	Grape	UREL001	UREL005	Firm
	Mint	UREL002	UREL006	Firm
	Orange	UREL003	UREL009	Soft
	Peach	-	UREL007	Firm
	Strawberry	UREL004	UREL010	Soft

\* Firmness is only applicable for Y-Shaped ReliaBites.

**Essix Aligner Chewies**

Same size as standard dental rolls - but better. Made of soft plastic, they are hygienic and easy to use. Two seaters per patient pack.

**10 Packs of 2 chewies.**

Bubblegum	<b>Code:</b> UACMB00
Mint Green	<b>Code:</b> UACMG00
Plain	<b>Code:</b> UACMP00
Grape	<b>Code:</b> UACMG00
Pineapple	<b>Code:</b> UACMPA0







**ReliaPry**



**Introducing ReliaPry  
Clear Aligner Removal Tool**

Designed to offer an effortless solution to the daily task of aligner removal.  
With ReliaPry, your patients will have a reliable and gentle tool that allows removal of clear aligners easily and without stress.

Resealable and tamper-proof patient packs.

- Individually wrapped patient packs
- Each patient pack contains 1 ReliaPry tool
- Contains 100 patient packs - Assorted Colours.

Pack 100	<b>Code:</b> UREL011
----------	----------------------

**Essix  
Retainer Brite**



Cleans and brightens retainers, night guards, mouth guards, splints and most other removable dental appliances.

- Helps remove plaque & tartar
- Kills germs & bacteria
- Keeps appliance minty-fresh.

Retainer Brite 36 - 1 month supply	<b>Code:</b> URBT000
Retainer Brite 92 - 3 month supply	<b>Code:</b> URBT001



**Retainer Cleaning Tablets**



- Minty fresh no nasty after taste.
- Expertly formulated to vigorously effervesce in a retainer bath and clean your dental/ortho appliance with a minty scent.
- Eliminates stubborn stains, odours & discolouration.
- Keeps invisible braces...invisible!

36 - 1 month supply	<b>Code:</b> UORC120
92 - 3 month supply	<b>Code:</b> UORC121



**Retainer Box**



Bleaching/Retainer boxes in a variety of colours.

Shallow	Pack 10	<b>Code:</b> UBRBSAC
* 88x73x30mm		
Deep	Pack 10	<b>Code:</b> UBRBDSC
* 80x70x40mm		



**Retainer Boxes**

Assorted colours.

Small	Pack 24	<b>Code:</b> UPRO002
* Small Colours: Red, Green, Pistachio, Blue, Fuchsia, Orange. 29mmx76mmx72mm		
Glitter Retainer Boxes	Pack 24	<b>Code:</b> UPRO003
* Glitter Colours: Purple, Green, Yellow, Blue, Pink, Orange. 29mmx76mmx72mm		
Deep Pack	Pack 24	<b>Code:</b> UPRO001
* Deep Colours: Red, Green, Pistachio, Blue, Fuchsia, Orange. 42mmx82mmx72mm		



360 | whitening



360 | whitening

### Whitening Gel - Day and Night Kits

The dual action of 360 Whitening gel lightens your patient's teeth from within while simultaneously removing surface stains.

Once applied to the teeth the bond gently breaks down creating free radicals that gently but effectively whiten the teeth quickly without sensitivity.

Developed by a team with a huge wealth of experience within the dental whitening industry, the 360 Whitening system has evolved to deliver a great system which delivers great performance with virtually zero sensitivity.

The unique gel breaks down to form oxygen ions that safely penetrate deep into the teeth to give a brighter, whiter smile.

The active ingredient in all professional tooth whitening systems is peroxide. While we can't actually change the H<sub>2</sub>O<sub>2</sub> molecule to make one more effective than another. We can however improve the chemical stabilisation (in our case Tromaline). This active chelating agent keeps the gel fresh and prevents it from breaking down after manufacture.

Day 6% HP Kit	<b>4 x 3ml</b>	<b>Code:</b> U360064
Night 16% CP Kit	<b>4 x 3ml</b>	<b>Code:</b> U360164
Night 10% CP Kit	<b>4 x 3ml</b>	<b>Code:</b> U360104



### Whitening Refill Syringe

Day 6% HP Top Up	<b>1 x 3ml</b>	<b>Code:</b> U360061	Day 6% HP Top Up	<b>3 x 3ml</b>	<b>Code:</b> U360063
Night 10% CP Top Up	<b>1 x 3ml</b>	<b>Code:</b> U360101	Night 10% CP Top Up	<b>3 x 3ml</b>	<b>Code:</b> U360103
Night 16% CP Top Up	<b>1 x 3ml</b>	<b>Code:</b> U360163	Night 16% CP Top Up	<b>3 x 3ml</b>	<b>Code:</b> U360161



### Whitening Gel - Day & Night Kits

**Boutique By Day** is a 6% hydrogen peroxide gel, containing potassium nitrate which is a proven desensitiser. Worn for only one hour per day, this gel is designed for patients who want a fast, comfortable and convenient solution to whiter teeth.

This gel releases large quantities of oxygen free radicals (which whiten the teeth) over a short period of time, therefore whitening the teeth, both quickly and safely. Fast results, which are visible in less than a week.

**Boutique By Night** is a carbamide peroxide gel available in a 10% or 16%, containing potassium nitrate, which is proven desensitiser. Worn for 4 hours, or overnight, this gel is designed for patients who would prefer to not have their custom trays in during the day and would prefer to whiten whilst they are asleep.

This gel releases oxygen free radicals (which whiten the teeth) over a longer period of time, due to its sustained release. This gradual approach will still give fantastic results, due the length of time the gel stays active.

**Day Kit 6% HP**  
4 x 3ml Code: UBTK006

**Night Kit 10% CP**  
4 x 3ml Code: UBTK010

**Day Kit 16% CP**  
4 x 3ml Code: UBTK016

**Night Combo Kit 1x10% CP & 3x16% CP**  
4 x 3ml Code: UBCK164

**Night Combo Kit 2x10% CP & 2x16% CP**  
4 x 3ml Code: UBCK264

**Combo Kit 1x6% 3x16%**  
4 x 3ml Code: UBCK134

**Combo Kit 2x6% 2x16%**  
4 x 3ml Code: UBCK224

**Combo Kit 3x6% 1x16%**  
4 x 3ml Code: UBCK314

**Combo Kit 2x10% 1x16% 1x6%**  
4 x 3ml Code: UBCK166

**Combo Kit 2x16% 1x10% 1x6%**  
4 x 3ml Code: UBCK106



### B1 Black Diamond 16% Kit

Kit Contains:

- Syringes 3ml x 8
- Whitening Trays
- Boutique Biomin Toothpaste
- Boutique Black Charcoal Floss
- B1 guarantee

**Code:** UBTR010



### Whitening Gel Night Refill

10% or 16% Carbamide Peroxide Gel with Potassium Nitrate. By Night is a 16% carbamide peroxide gel, containing potassium nitrate, which is proven desensitiser.

Pillow Box 10% CP

**1 x 3ml Code:** UBPB101

Pillow Box 10% CP

**2 x 3ml Code:** UBPB102

Pillow Box 10% CP

**3 x 3ml Code:** UBPB103

Pillow Box 16% CP

**1 x 3ml Code:** UBPB161

Pillow Box 16% CP

**2 x 3ml Code:** UBPB162

Pillow Box 16% CP

**3 x 3ml Code:** UBPB163



### Boutique Whitening Gel Night Hybrid Pro

Boutique Whitening Hybrid-Pro 4.25% Hydrogen Peroxide 4.25% Carbamide Peroxide Boutique Hybrid-Pro whitens your teeth overnight.

Pillow Box 4.25%

**1 x 3ml**

**Code:** UBHPPB1

Pillow Box 4.25%

**2 x 3ml**

**Code:** UBHPPB2

Pillow Box 4.25%

**3 x 3ml**

**Code:** UBHPPB3



### Whitening Gel Day Refill

Boutique – By Day is a 6% hydrogen peroxide gel, containing potassium nitrate which is a proven desensitiser. Worn for only one hour per day, this gel is designed for patients who want a fast, comfortable and convenient solution to whiter teeth.

Pillow Box 6% HP

**1 x 3ml**

**Code:** UBPB061

Pillow Box 6% HP

**2 x 3ml**

**Code:** UBPB062

Pillow Box 6% HP

**3 x 3ml**

**Code:** UBPB063





**BlancOne® HOME+ EVER**  
Night-time whitening treatment  
for rejuvenation of teeth

Featuring  
**7%**  
carbamide  
peroxide\*



**Indications**

Orthodontic aligners  
Sensitive teeth  
Maintenance

More  
**BlancOne**  
choices  
online

**Treatment cycle**

10-15 applications - night time

Typical effectiveness

Stability

Regeneration

**BlancOne Home+ Ever Single Kit**

**Code: UBOHESK**

**BlancOne Home+ Ever Multi Kit**

**Code: UBOHEMK**

\*it can be used for extended periods.

**Light Cure  
Wax-Like  
Protection**

**New**



**ReliaWax®**

1.5 GM ReliaWax® syringe with 10 tips **Code: UREL121**

Reliance is excited to announce our newest orthodontic product innovation **ReliaWax!**

**ReliaWax** is a reliable and revolutionary wax-like protection in a syringe that provides enduring comfort for your patients.

- Outperforms traditional patient wax
- Light cure gel in a syringe
- Semi-permanent - Remains in place from one appointment to the next
- Withstands routine brushing and eating
- Crystal clear and durable
- Fluoresces under black light
- Single piece removal.



**Controlled application.**



**Semi-permanent clear protection.**



**Fluoresces under black light.**



**One piece removal.**

The standard orthodontic patient wax may last a couple of hours or at most a couple of days, but ReliaWax is different. Apply ReliaWax in office, light cure, and it will stay in place between appointments!

**Kemdent Wax In Tins**



For protecting your gums from the metal edges of braces. The wax is solid at room temperature, but can be softened and shaped by the warmth of your hands. Smoothed onto braces, it sticks to them and creates a buffer between the brackets and the gums.

**Plain Code: UORW000 Pack 50**

**Mint Code: UORW001 Pack 50**





**CURAPROX**  
**Ortho Brush**

Cut slightly shorter in the middle to perfectly wrap around fixed ortho appliances.

**Code:** UCXORTHO Each



**CURAPROX**  
**Interproximal Brush**

Precise and gentle extra care around fixed appliance.

**Code:** UCUR024 Each



**CURAPROX**  
**Implant & Ortho**

Super compact, flexible and efficient seven-tuft head to clean ortho appliances.

**Code:** UCUR026 Each



**Orthodontic Kit**

Fixed appliances require thorough and careful cleaning. The TePe Orthodontic Kit includes specialist cleaning products selected to enable patients to clean all areas of their braces, as well as keeping their teeth and gums healthy.

Featuring samples of a variety of products, your patients will be able to try out various combinations to choose the best match for their personal requirements.



**Code:** UTPORTK

**Contains:**

- 1 x TePe Supreme
- 1 x TePe Compact Tuft
- 1 x TePe EasyPick
- 1 x TePe Angle
- 2 x TePe Interdental Brushes (1x yellow, 1 x green)
- 1 x TePe Orthodontic Wax.

**Made by certified renewable material**



**TePe**  
**Implant/  
Orthodontic Brush**

Extra slim brush head for improved access.

- Optimised for cleaning buccal implant surfaces or orthodontic appliances.

**Code:** UTIOMED



**TePe**  
**Interspace**

Ideal for cleaning furcations, implants, fixed braces or behind the last tooth.

- Brush tip can be attached to either side of the handle.
- Comes with 12 replaceable brush tips.

**Code:** UTIS001



**TePe**  
**Compact Tuft Brush**

Optimised for precision cleaning.

- Dome-shaped brush head with dense, rounded tuft.
- Ideal for cleaning along the gum line & on the occlusal surfaces of emerging teeth.

**Code:** UTCTB25

# BioMin®

## Armour for Teeth

Protect your teeth from white spot lesions during Orthodontic treatment with BioMin® F toothpaste



BioMinF Toothpaste 75ml	Pack 8	Code: UBIOMINF
BioMinC Toothpaste 75ml	Pack 8	Code: UBIOMINC
BioMinF Travel Size 18ml	Pack 8	Code: SAMBIOS



- Helps reduce the risk of white spot lesions during Orthodontic treatment
- Provides controlled release of Calcium, Phosphate and Fluoride for up to 12 hours after brushing
- Strengthens teeth and protects against decay
- Makes teeth feel cleaner and fresher
- Developed from research at Queen Mary's University of London
- Develops acid-resistant fluorapatite plugging of exposed dentine tubules.

@BioMinTech 
 /BioMinTechnologiesLimited 
 @biomintechnologieslimited 
 [www.biomin.co.uk](http://www.biomin.co.uk)

**Trycare** Tel: 01274 88 10 44 | Web: [www.trycare.co.uk](http://www.trycare.co.uk) | Email: [Orthodontics@trycare.co.uk](mailto:Orthodontics@trycare.co.uk)

# Clinisept+ Dental

Outstanding clinical  
results for mucosa.

- Effective cleansing and antimicrobial protection (EN1040:2005, EN1276:2019, EN14476:2013 +A1:2015)
- Contains no chlorhexidine, alcohol, colouring or flavouring
- Non-irritant to teeth or gums
- Causes no staining
- Neutral pH 7.0
- Non-cytotoxic and Anti-inflammatory



## Clinisept+ Mouthwash

Use daily in Fixed and Aligner treatment. As elastomeric can increase the bacterial load in the oral cavity the rapid oxidising action provides superior levels of microbial control. Unlike traditional mouthwashes it calms and soothes sore mouths and gums.

400ml	Each	<b>Code:</b> UCSPMW4
-------	------	----------------------

Clinisept+ Dental Mouthwash has an 18-month shelf life and should be used within 3 months of opening.

Patient Supplies



## Fluorigard AF Daily Rinse



A daily mouth rinse that prevents dental caries. Suitable for children over 6 years of age. Listed on the British National Formulary (BNF) as Sodium Fluoride mouth wash 0.05% (225ppm F) Mint flavour. Alcohol free.

Blue 400ml	Pack 6	<b>Code:</b> UFAFDB6
Green 400ml	Pack 4	<b>Code:</b> UFGFMRG



## Fresh & Go Mouthwash



Specifically formulated for orthodontic appliance wearers as it is alcohol free, contains fluoride and has a refreshing mild after taste. Made in the UK. Alcohol free. 0.05% Sodium Fluoride (225ppm F).

500ml	Pack 12	<b>Code:</b> UORC104
-------	---------	----------------------



## Home Care Hygiene Range



### Clear Aligner Home Care Kit

This pack contains the essential items needed to help patients clean and care for their aligners as well as maintaining good Oral Hygiene.

Code: UORC090

### Mini Aligner Home Care Kit

This pack contains the essential items needed to help patients clean and care for their aligners as well as maintaining good Oral Hygiene.

Code: UORC091



### Deluxe Fixed Brace Home Care Kit

Start your patients off with a convenient homecare pack that will encourage them to practice good oral hygiene right from the beginning of their treatment.

Code: UORC115



### Fixed Brace Home Care Kit

An ideal selection of products to help your patients look after their new fixed brace, and also to help them maintain good oral hygiene, during orthodontic treatment.

Code: UORC116





### Curasept Ortho Kit

Thanks to the unique formula of Curasept ADS 205 Oral Rinse, you can now provide your patients with the anti-bacterial benefits of 0.05% chlorhexidine – but with dramatically reduced tooth discolouration and taste disruption, as well as 0.05% fluoride.



#### Contents

- Curasept ADS 205 Mouthwash 200ml
- Curasept ADS 705 Toothpaste 5ml
- Curasept Professional Floss
- Curasept Orthodontic Toothbrush
- Blue Zip Bag.

**Code:** UCUR095      Each

### CURAPROX

#### Aligner Foam



Helps protect teeth underneath aligners, retainers and mouth guards. The foam restores protects and remineralises with natural minerals and forms a moisturising, protective film that feels silky smooth.

**Code:** UCUR009    40ml

### CURAPROX

#### Ortho Kit



Contains: Wax, Mini Floss, Ortho Brush, Implant/Ortho brush / Ortho Pocket Set all in a patient zipper bag.

**Code:** UCXODRK      Each



### GC Tooth Mousse

To reduce white spot lesions and a topical application after IPR.

Intro Kit	Pack 5	<b>Code:</b> UTM000
Assorted	Pack 10	<b>Code:</b> UTM0006
Mint	Pack 10	<b>Code:</b> UTM0003
Strawberry	Pack 10	<b>Code:</b> UTM0001





### Impression Trays

- Accurate impressions of Orthodontic Patients.
- Rigid plastic and excellent retention.
- Comfortable & ergonomic design.
- Integral handles.

1 Upper Red	<b>Code:</b> UITOU01
1 Lower Red	<b>Code:</b> UITOL01
2 Upper Orange	<b>Code:</b> UITOU02
2 Lower Orange	<b>Code:</b> UITOL02
3 Upper Blue	<b>Code:</b> UITOU03
3 Lower Blue	<b>Code:</b> UITOL03
4 Upper Green	<b>Code:</b> UITOU04
4 Lower Green	<b>Code:</b> UITOL04
5 Upper Yellow	<b>Code:</b> UITOU05
5 Lower Yellow	<b>Code:</b> UITOL05
6 Upper Purple	<b>Code:</b> UITOU06
6 Lower Purple	<b>Code:</b> UITOL06



### Projot Bite Recorders

- Incisal opening.
- Occlusal Registration for Functional Appliances.
- Available in two sizes: 2mm or 4mm.
- These plastic jigs can be used with either wax or silicone occlusal registration materials to record protrusive registration of the mandible. For Class II Malocclusions.

White	Sold in packs of 25	<b>Code:</b> UORC112
Blue	Sold in packs of 25	<b>Code:</b> UORC113



### Periphery White Wax Sticks 78

A soft white plastic stick wax 185mm x 6.6mm for Orthodontic use in the extension of periphery, post-daming and stops for impression Tray S.

78 Sticks	<b>Code:</b> UORW002
-----------	----------------------



### Orthoprint Alginate Fast

- Fast water absorption.
- Highly elastic alginate.
- Extra rapid set for orthodontics (45 seconds)
- Yellow in colour.
- Vanilla in flavour.

500g	<b>Code:</b> UOFS000
------	----------------------



### ImpressPLUS-5 Dimensional Stability Alginate

- 120 hours of dimensional stability.
- Extra fast setting time of 30 seconds in the mouth.
- Exceptional accuracy of 20 microns.
- Easy to mix with high elasticity.
- Mint Flavour.

Pack 450g	<b>Code:</b> UPPAF00
-----------	----------------------

# Cutters



**Hu-Friedy**

## Universal Cut & Hold Distal End Cutter

When used intraorally it safely holds the cut portion to be discarded. Patient comfort is enhanced by the smooth, tapered tip.

**Max wire size .021" x .025".**

- Standard Handle** Code: UHUF093 Ref: 678-101
- Long Handle** Code: UHUF174 Ref: 678-101L

**Stim Line**



**Hu-Friedy**

## Slim Flush Cut & Hold Distal End Cutter

A true flush cut and hold plier, allowing 50% reduced working end enhancing visibility and improving efficiency by eliminating the need to use a cotton wool roll.

**Max wire size .021" x .025".**

- Code:** UHUF170 Ref: 678-113



**Hu-Friedy**

## Hard Wire Cutter

**Max wire size .022" x .028".**

- Code:** UHUF007 Ref: 678-104



**Hu-Friedy**

## Hard Wire Cutter 15° Angled Offset

Offset tip enhances access to difficult areas.

**Max wire size .022" x .028".**

- Code:** UHUF008 Ref: 678-103



**Pin & Ligature Cutter**

Designed to cut soft wire and ligature wires.  
**Max wire size .015”.**

**Code:** UHUF009      **Ref:** 678-105



**Pin & Ligature Cutter**

Designed to cut soft wire and ligature wire.  
**Max wire size .012”.**

**Code:** UHUF014      **Ref:** 678-110



**Pin & Ligature Cutter**

Micro, ultra slim design for easy access in difficult areas.  
**Max wire size .012”.**

**Standard Handle Code:** UHUF011      **Ref:** 678-107  
**Long Handle Code:** UHUF012      **Ref:** 678-107L



**Pin & Ligature Cutter**

Mini cutter.  
**Max wire size .012”.**

**Code:** UHUF010      **Ref:** 678-106



**Pin & Ligature Cutter  
 15° Angled**

15° off set tip with ultra slim profile allowing for easy access to difficult areas.  
**Max wire size .012”.**

**Code:** UHUF013      **Ref:** 678-109



**Slim Line**



**Micro Ligature and Elastomeric Remover**

The slender tips on this cutter allow for easier access when removing elastics. The face of the cutter has been scooped out to enhance visibility.  
**Max wire size .012”.**

**Code:** UHUF074      **Ref:** 678-500



## Wire Forming



**Hu-Friedy**

### Bird Beak

Versatile loop forming pliers for round wires.

**Max wire size .030”.**

**Code:** UHUF044

**Ref:** 678-304



**Hu-Friedy**

### Bird Beak with Cutter

Wire former including a built in cutter for all stainless steel wires.

**Max wire size .025”.**

**Code:** UHUF063

**Ref:** 678-325



**Hu-Friedy**

### Long Tapered Bird Beak

Longer tips allow greater access. Bends round and rectangular wire.

**Max wire size .025”.**

**Code:** UHUF064

**Ref:** 678-326



**Hu-Friedy**

### Bird Beak Plier Light Wire - With Groove

A longer cone than a standard bird beak, it is useful for forming precise loops in light wires.

**Max wire size .020”.**

**Code:** UHUF045

**Ref:** 678-305



**Bird Beak Plier Light Wire - Without Groove**

A longer cone than a standard bird beak, it is useful for forming precise loops in light wires.

**Max wire size .020”.**

**Code:** UHUF056

**Ref:** 678-318



**Optical Plier**

Forms helical closing loops and archwire adjustments.

**Max wire size .022” x .025”.**

**Code:** UHUF061

**Ref:** 678-323



**Jarabak Plier**

Versatile light wire bending pliers. Grooves assist with precise bending and closing of loops.

**Max wire size .020”.**

**Code:** UHUF041

**Ref:** 678-301



**Omega Loop Forming**

Graduated cone .045”, .060” and .075” designed to fabricate precise omega loops.

**Max wire size .022” x .025”.**

**Code:** UHUF043

**Ref:** 678-303

**Replacement Tip for 678-303**

**Code:** UHUF095 1pc per pack

**Ref:** 678-002



**Tweed Loop Forming Plier**

Loop forming plier with .045”, .060” and .075” diameters for creating bull and helical loops.

**Max wire size .028” x .028”.**

**Code:** UHUF045

**Ref:** 678-305



**Old-Style Loop Plier**

Forms and closes loops with one cylindrical three-step beak and a triangular beak.

**Max wire size .022” x .024”.**

**Code:** UHUF062

**Ref:** 678-324





**O`Brien Plier**

For precise forming of small helical loops and intra-oral tip back bends.

**Max wire .020”.**

**Code:** UHUF051

**Ref:** 678-311



**Marcotte Plier**

For precise forming of helical loops and T loops.

**Max wire size .022” x .025”.**

**Code:** UHUF054

**Ref:** 678-316



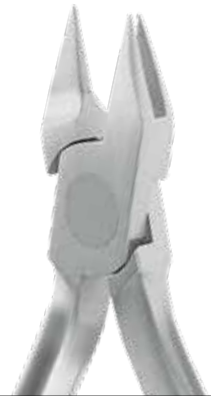
**Nance Plier**

For precise forming of loops in four lengths, 3,4,5 and 6mm. Groove at base aids in closing the loop. Serrated.

**Max wire .022”.**

**Code:** UHUF057

**Ref:** 678-319



**Three Jaw Plier**

NiTi Three Jaw Pliers Designed for the forming and contouring of all archwires; especially nickel titanium.

**Max wire up to .020”.**

**Code:** UHUF060

**Ref:** 678-322



**Three Jaw Plier**

Useful for contouring and bending wires .

**Max wire size .030”.**

**Code:** UHUF042

**Ref:** 678-302



**Mini Three Jaw Plier**

Designed for forming, contouring of light wires.

**Max wire size .030”.**

**Code:** UHUF052

**Ref:** 678-312



**Hollow Chop**

Perfect for subtle contouring of archwires.  
**Max wire size .030”.**

**Code:** UHUF050

**Ref:** 678-310



**Adams Plier**

Excellent precise right angle bends and appliance adaptation.  
**Max wire size .040”.**

**Code:** UHUF058

**Ref:** 678-320



**General Contouring Plier**

Tapered and serrated pliers for contouring archwires.  
**Max wire .022” x .025”.**

**Code:** UHUF053

**Ref:** 678-315



**Tweed Arch Bending Plier**

Designed for placing first, second and third order bends. .070” (1.78 mm) blade width.  
**Max wire size .022” x .025”.**

**Code:** UHUF046

**Ref:** 678-307



**Rectangular Arch Bending Plier**

Designed for placing first, second and third order bends. .070” (1.78 mm) blade width.  
**Max wire size .022” x .025”.**

**Code:** UHUF048

**Ref:** 678-308



**Arch Bending Plier - Short**

Designed for placing Torquing bends in to small areas of archwires, without distorting the rest of the archwire.

**Code:** UHUF047

**Ref:** 678-307S



**Torquing Pliers  
With Key .018 x .022 inch**



Designed for placing Torquing bends in to small areas of archwires, without distorting the rest of the archwire.

<b>Code:</b> UHUF067	Ref: 678-328-21
Torquing Key. 019 x .022	
<b>Code:</b> UHUF102	Ref: 678-021



**Slim Line Hammerhead  
Ni-Ti Bender**



Reduce a multi-step process down to one step with these wire-forming pliers. They have a 10% thinner working end, are less intrusive and allow for maximum patient comfort.

**Max wire size .025”.**

<b>Code:</b> UHUF076	Ref: 678-502
----------------------	--------------



**Step Plier**



Step pliers allow clinicians to easily create Z-bends/ Offset bends in one simple step by using a gentle squeeze of the plier handle. Can be used intra-orally without removing the wire for quick precise adjustments. Create right-handed and left-handed step-ups or step-downs at 0.5, 0.75 or 1mm.

**Max wire size .022” x .025”.**

<b>Code:</b> UHUF071	0.5mm	Ref: 678-340
<b>Code:</b> UHUF072	0.75mm	Ref: 678-341
<b>Code:</b> UHUF073	1.00mm	Ref: 678-342



**V-Stop**

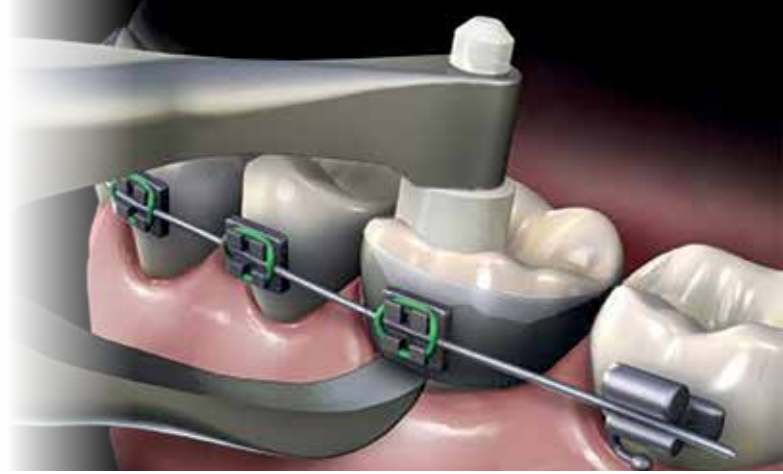


Places a V bend in archwires, including Niti to prevent archwire from travelling.

**Max wire .022” x .025”.**

<b>Code:</b> UHUF059	Ref: 678-321
----------------------	--------------

## Band & Bond Removing Pliers



**Hu-Friedy**

### Bracket Removing Plier

Works well for steel, ceramic and plastic brackets of all types.

**Code:** UHUF033

Ref: 678-219



**Hu-Friedy**

### Angulated Bracket Remover

High angle plier, with long handle allows for easy bracket removal both in the anterior and posterior region.

**Code:** UHUF034

Ref: 678-220L



**Hu-Friedy**

### Posterior Band Removing Plier - Long Handle

The alignment of the tip and occlusal pad is well suited for posterior band removal.

**Code:** UHUF026

Ref: 678-207

**Replacement Plastic Pad 678-207 + 678-208, 6.3mm**

**Code:** UHUF098 6 pcs per pack Ref: 678-014



**Hu-Friedy**

### Band Removing Plier

Short Posterior Band Removing Pliers The offset alignment of tip and occlusal pad is well suited for band removal.

**Code:** UHUF027

Ref: 678-208

**Replacement Plastic for 678-207 + 678-208, 4.8mm**

**Code:** UHUF180 6 pcs per pack Ref: 678-036



### Slim Posterior Band Removing Plier

Slim band removing pliers with tapered beak providing improved visibility and access.

These pliers come with the 3/16" pad already loaded in the working end, and with an extra 1/4" to try. Replacement pads can be re-ordered as needed.

**Code:** UHUF077      **Ref:** 678-503

**Replacement Plastic Pad 678-207 + 678-208, 6.3mm**

**Code:** UHUF098    6 pcs per pack    **Ref:** 678-014

**Replacement Plastic for 678-207 + 678-208, 4.8mm**

**Code:** UHUF180    6 pcs per pack    **Ref:** 678-036



### Band Seating Plier

Serrated tips to assist in placing bands.



**Standard Handle    Code:** UHUF024    **Ref:** 678-205

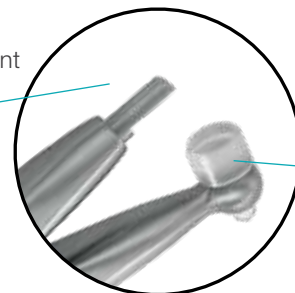


### Adhesive Removing Plier

Adhesive removing pliers reversible, replaceable blade is used to remove the bulk of composite material after debonding attachments.



Replacement Blade



Replacement Plastic

**Replacement Blade for 678-206**

**Code:** UHUF094    1 pc per pack    **Ref:** 678-001

**Replacement Plastic for 678-206, 6.3mm**

**Code:** UHUF099    6 pcs per pack    **Ref:** 678-014A

**Replacement Screw Imbus 678-206 + 678-303**

**Code:** UHUF100    1 pc per pack    **Ref:** 678-018

**Code:** UHUF025      **Ref:** 678-206



# Utility Pliers



## Ultra Slim Weingart Pliers

Serrated tips are angled to firmly hold wires at a precise angle. The finer curved and tapered tips make it the perfect utility plier for working around brackets.

**Code:** UHUF018

**Ref:** 678-200

Slim Line



## Ultra Slim Weingart Pliers

The serrated tips allow for better gripping and accessibility into tight spaces that are typically not possible with hands. These pliers help guide the wire through buccal tubes and into brackets with ease.

**Max wire size up to .030”.**

**Code:** UHUF075

**Ref:** 678-501



## Ultra Slim Weingart Pliers

Versatile utility pliers with serrated tips. Tapered and angulated in design convenient for placement and removal of archwires.

**Standard Handle Code:** UHUF019 **Ref:** 678-201

**Long Handle Code:** UHUF020 **Ref:** 678-201L



## Slim Weingart Pliers

Serrated tips and a Slim profile, which offer great access and versatility.

**Max wire size .030”.**

**Code:** UHUF021

**Ref:** 678-202

**Hu-Friedy****Howe Plier Straight**

Howe utility pliers have a serrated tip for ease of gripping the wire. It is useful for placement and removal of archwires as well as placement of auxiliaries.

**Code:** UHUF022

Ref: 678-203

**Hu-Friedy****Howe Offset 40°**

Howe utility pliers have a serrated tip for ease of gripping the wire. The tips have a 40° angulation for accessing lingual and other hard to access areas. It is useful for placement and removal of archwires as well as placement of auxiliaries.

**Code:** UHUF023

Ref: 678-204

**Hu-Friedy****Crown & Band Contouring Pliers**

Designed for fitting of Stainless Steel crowns and bands.

**Code:** UHUF037

Ref: 678-221MC

**Hu-Friedy****Band Crimping Pliers**

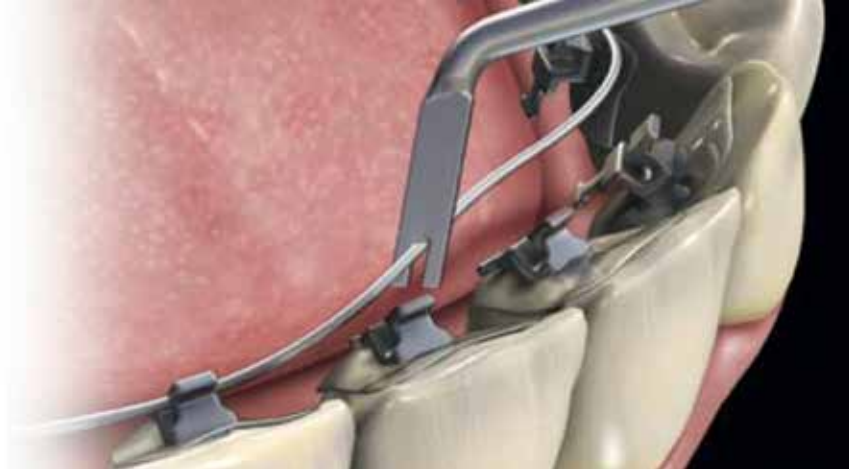
Thin tips allow for easy access on bicuspid and molar bands.

**Code:** UHUF039

Ref: 678-225



## Utility Pliers



### Separating Pliers



Used for the placement of elastic separators.

**Code:** UHUF028

**Ref:** 678-210



### Steiner Ligature Tying Plier



Ideal for tying stainless steel ligature wires.

**Max wire size .015".**

**Code:** UHUF038

**Ref:** 678-222



### Coon Ligature Tying Plier

Popular plier for tying Stainless Steel Ligature wire.

**Max wire size .015".**

**Code:** UHUF029

**Ref:** 678-211



**Hu-Friedy**

**Mathieu Needle Holder**



Very fine for elastic ligature. Slimmer, serrated tips makes this ideal for gripping and placing elastic auxiliaries.

**Code:** UHUF068

**Ref:** 678-330

**Hu-Friedy**

**Ortho Mathieu Pliers Wide Tip**



Serrated tips makes this ideal for gripping and placing elastic auxiliaries. Similar to 678-330 but with wider tips.

**Code:** UHUF069

**Ref:** 678-331



**Hu-Friedy**

**Mathieu Needle Holder Perma Sharp**



These are ideal when you want the flexibility of using for elastic and stainless steel ligatures. The Perma Sharp insert can be replaced up to two times, extending the life of the instrument.

**Code:** UHUF070

**Ref:** 678-332



# Hand Instruments



## Direct Bond Bracket Holder

Bracket tweezers for accurate bracket placement, while the thinner back end of the instrument allows for an easy manipulation of the bracket's position by a simple flip of the instrument.

**Code:** UHUF030

**Ref:** 678-212



## Slim Direct Bond Bracket Holder



Slim tipped bracket tweezers with tapered tail to aid in bracket manipulation.

**Code:** UHUF031

**Ref:** 678-212M



## Ultra Slim Buccal Tweezers



Ultra slim tipped buccal tube tweezers to aid in placement.

**Code:** UHUF079

**Ref:** 678-505



**Hu-Friedy****Band Pusher / Scaler**

A double ended hand instrument on #6 handle, combining a scaler and a band pusher.

**Code:** UHUF175

Ref: 678-904

**Hu-Friedy****Band Pusher / Blunt Scaler**

A double ended hand instrument on #6 handle, combining a dull scaler and a band pusher.

**Code:** UHUF105

Ref: 678-906

**Hu-Friedy****Band Pusher / Ligature Director**

A double ended hand instrument on #6 handle, combining a ligature director and a band pusher.

**Code:** UHUF111

Ref: 678-912

**Hu-Friedy****Ligature Director / Band Pusher**

A double ended hand instrument on #6 handle, combining a ligature director and a band pusher.

**Code:** UHUF107

Ref: 678-908



**Hu-Friedy**

**Ligature Director / Scaler**

A double ended hand instrument on #6 handle, combining a ligature director and a scaler.

**Code:** UHUF104

Ref: 678-905



**Hu-Friedy**

**Explorer / Small Head Plugger**

A double ended hand instrument on #6 handle, combining a small plugger and a picker.

**Code:** UHUF106

1.5mm

Ref: 678-907



**Hu-Friedy**

**Explorer / Large Head Plugger**

A double ended hand instrument on #6 handle, combining a large plugger and a picker.

**Code:** UHUF108

2.5mm

Ref: 678-909



**Hu-Friedy**

**Ortho Scaler/Picker #SH6**

A double ended hand instrument on #6 handle, combining a scaler and a picker.

**Code:** UHUF113

Ref: 678-914

**Hu-Friedy****Dull Scaler**

A double ended hand instrument on #6 handle, combining a SH6 scaler and a SH7 scaler.

**Code:** UHUF110

Ref: 678-911

**Hu-Friedy****Dull Scaler #H5 / Jaquette Scaler #3**

A double ended hand instrument on #6 handle, combining a #H5 Scaler and a #3 Jaquette Scaler.

**Code:** UHUF109

Ref: 678-910

**Hu-Friedy****Ortho Scaler Towner #U15**

A single end dull scaler on #6 handle.

**Code:** UHUF112**2.5mm**

Ref: 678-913

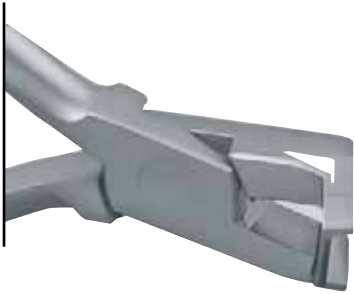
**Hu-Friedy****Slim Line Distal Cinch Back Hand Instrument****Slim  
Line**

Use the instrument to cinch back stainless steel wires distal to buccal tubes. The slender stem allows improved access and visibility in posterior areas. Max wire size .021" x .025".

**Code:** UHUF080

Ref: 678-506

# Cutters

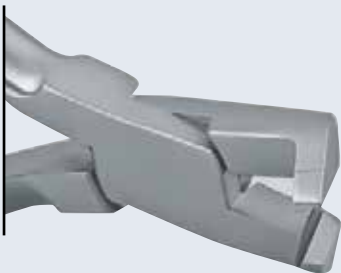


**Distal End Cutter With Safety Hold Mini**

Code: UNNR044

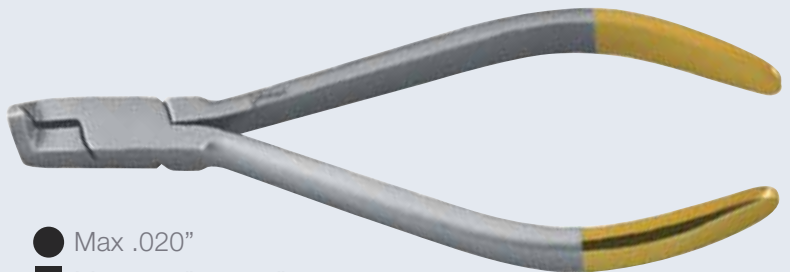


- Max .020"
- Max .021" x .025"



**Mini Distal End Cutter With Safety Hold Long Handle**

Code: UNNR045



- Max .020"
- Max .021" x .025"



**Hard Wire Cutter**

Code: UNNR046



- Max .020"
- Max .022" x .028"



**Hard Wire Cutter 15°**

Code: UNNR047

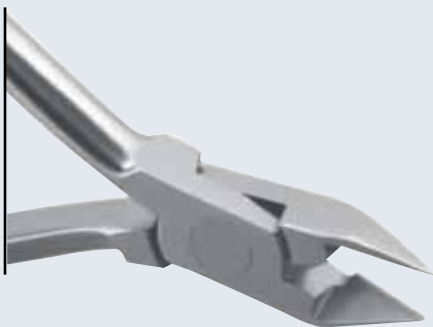
- Max .020"
- Max .022" x .028"



**Ligature cutter  
Standard**

Code: UNNR049

- Max .015"



**Ligature Cutter Micro**

Code: UNNR048

- Max .015"





# Wire Formers



**Wire Bending  
Flat/Round Angle**

**Code:** UNNR051

- Max .028"
- Max .022" x .028"



**Loop Forming Tweed**

**Code:** UNNR058

- Max .020"
- Max .018" x .022"



**Adams 64**

**Code:** UAOP064

- Max .040" (1.02 mm)



**Adams Spring Former 65**

**Code:** UAOP065

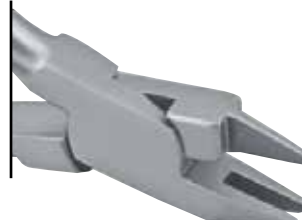
- Max .040" (1.02 mm)



**Light Wire Bending**

**Code:** UNNR053

- Max .020"
- Max .016" x .022"



**Aderer 3-Jaw Wire Bending**

**Code:** UNNR050

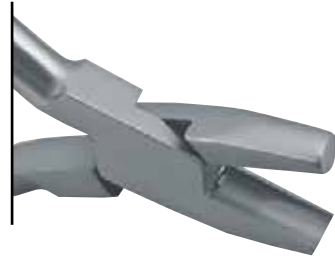
- Max .030"
- Max .022" x .028"



**Arch Contouring  
De La Rosa Grooved**

**Code:** UNNR052

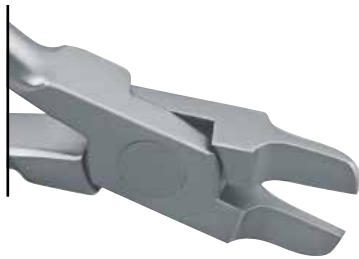
- Max .020"
- Max .021" x .025"



**Arch Forming  
De La Rosa Non Grooved**

**Code:** UNNR054

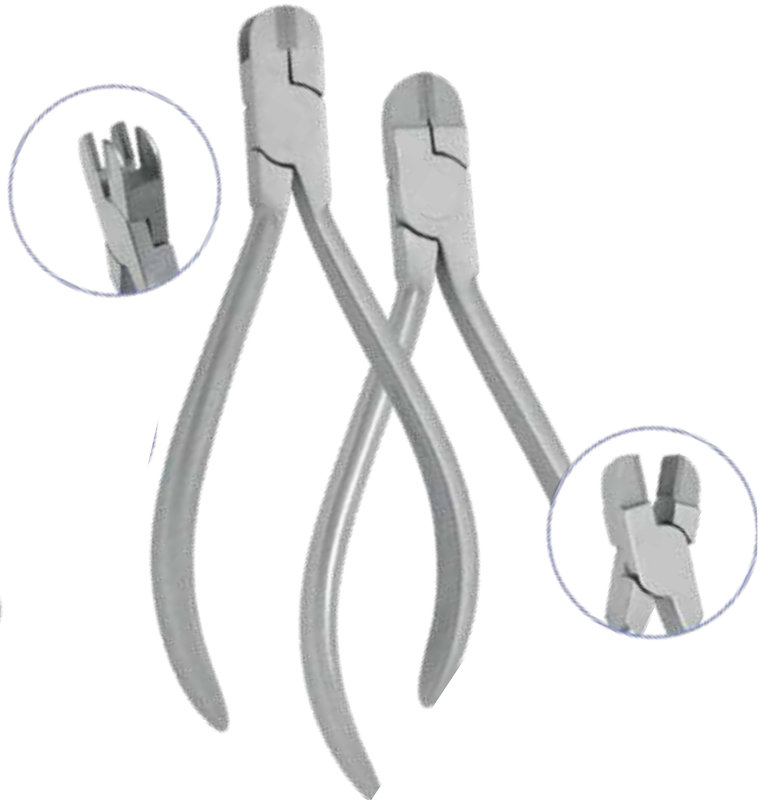
- Max .020"
- Max .021" x .025"



**Pliers Arch Forming Tweed/Angle**

**Code:** UNNR059

- Max .028"
- Max .022" x .028"



**Step Forming Plier**

<b>1.0mm</b>	<b>Code:</b> UAST141
<b>0.75mm</b>	<b>Code:</b> UAST142
<b>0.50mm</b>	<b>Code:</b> UAST143
<b>0.25mm</b>	<b>Code:</b> UAST144

**Torquing Plier Set**

Male and Female set.

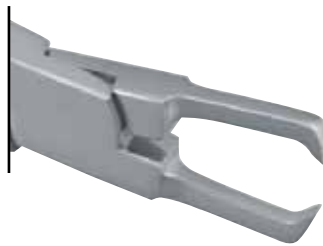
**Code:** UAST145

# Band & Bond Removers



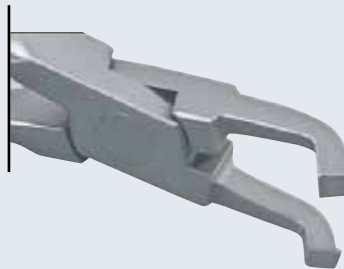
## Bracket Removing Straight

Code: UNNR042



## Bracket Removing Angled

Code: UNNR041



## Band & Bond Removers

Pliers posterior band removing  
Falcon, long.

Code: UNNR038

### Replacement Pads

4.8mm (1/4") pair

Code: UNNR039

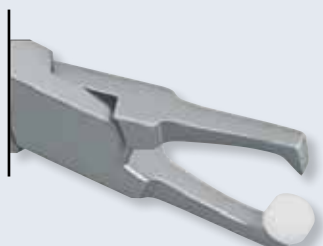
6.3mm (3/16") pair

Code: UNNR040

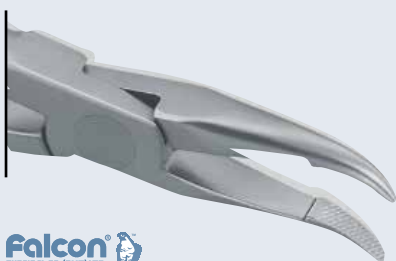


## Bracket Removing Straight With Plastic Pad

Code: UNNR043



# Utility

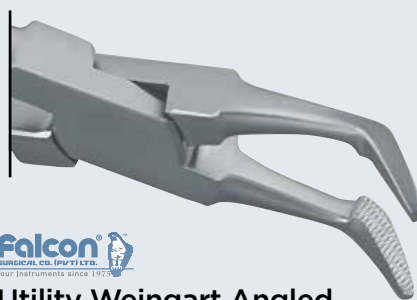


**Utility Weingart Narrow**

**Code:** UNNR060

● Max .020"

■ Max .022" x .028"



**Utility Weingart Angled**

**Code:** UNNR061

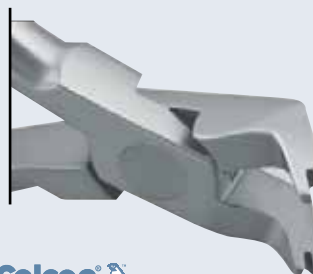
● Max .020"

■ Max .022" x .028"



**Surgical Ball Hook Crimping Straight**

**Code:** UNNR056



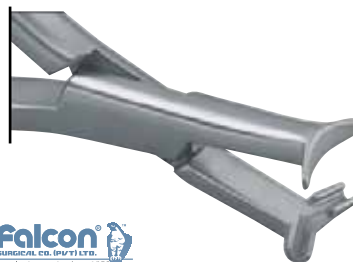
**Surgical Ball Hook Crimping Angled**

**Code:** UNNR055



**Separating Plier Fine 140mm**

**Code:** UNNR034



**Distal Bending (Hammer Head)**

**Code:** UNNR057

● Max .020"

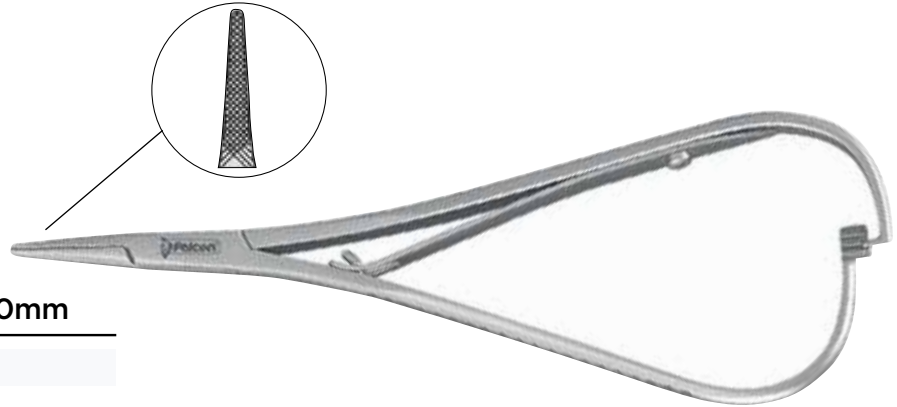
■ Max .022" x .028"

# Mathieus



## Ligature Forceps Fine 140mm

Code: UNNR037



# Mosquito

## Mosquito Forceps Halsted



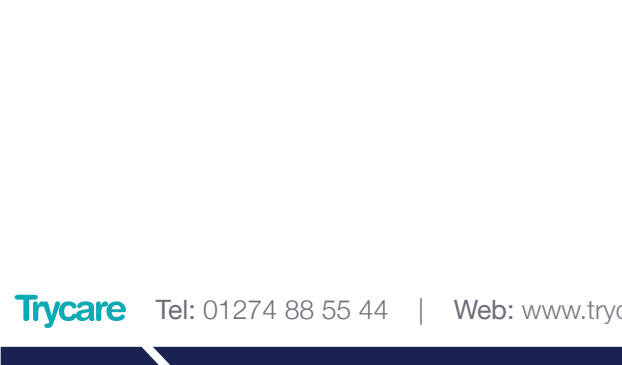
### Straight 125mm

Code: UNNR019



### Curved 125mm

Code: UNNR020



### Straight

Code: UPPFMST



### Curved

Code: UPPFMCV



# Hand Instruments



**Classic-Lite Ligature Director/Explorer**

Code: UNNR035



**Classic-Round Ligature Director/Tucker**

Code: UNNR036



**Classic-Round Elastic Ligature Applicator (Twirl-On)**

Code: UNNR033



**Eco+ Osteo Mitchell Carver 4 Octagonal**

Code: UAMTOM4

# Applicators & Band Pushers



**Band Pusher Mershon**

Code: UNNR021



**Band Seater (Bite Stick) Blue**

Code: UNNR022

# Bracket & Buccal Tube Placement



Code: UNNR025 135mm.



Code: UNNR029 135mm.



Code: UNNR026 135mm.



Code: UNNR030 110mm.



Code: UNNR027 135mm.



Code: UNNR031 Buccal tube tweezers 135mm.



Code: UNNR028 135mm.



Code: UNNR032 Reverse action buccal tube tweezers 135mm.



Bracket positioning gauge SS for .022" slot  
Stainless Steel.

Code: UNNR024

# Small Surgery Equipment



**KAVO**

**Kavo Rondoflex+**

Air-abrasion system with spray. The Kavo Rondoflex plus is the clean alternative to conventional air-abrasion devices. Highly efficient, clean working, with ease of handling, precise targeting and the best possible protection for healthy dental tissues.

Provides treatment with no drilling, no injection, no noise, no vibration and no unpleasant sensation in the mouth. May be used with or without water to ensure a non-agp setting.

**Code:** UKRFP00

**Contains:**

- 1 x Powder container for 50 µm
- 1 x Powder container for 27 µm
- 2 x Powder container cover
- 1 x Cleaning drill
- 2 x Nozzle pin
- 1 x Abrasive powder 27 µm 75g
- 1 x Abrasive powder 50 µm 75g
- 1 x Cannula 110° :0.46 mm
- 1 x Cannula 110° : 0.6 mm
- 1 x Key for fixing the Cannula engager

Cavity preparation with minimum invasion.

- Clearing out fissures
- Preparing surfaces for bonding
- Removing cement residues from crown and bridges - extra orally
- Excellent for tooth preparation with WIN, Incognito, Lingual appliances and bonded retainers.



**Rondoflex Powder**

1kg.

27 micron.	<b>Code:</b> TD2666
50 micron.	<b>Code:</b> TD2662



### Orthodontic Mini Blaster

- Fully autoclavable
- Index finger controlled operating valve
- For right or left handed operators
- Unique ratchet system
- In-line high pressure stopcock provided for ease of connection
- Simple installation kit
- 50 micron abrasive grit included
- 12 Month Warranty.

### Clinical Procedures

- Tooth preparation
- Porcelain repairs
- Removal of residual cement from crowns, bridges, orthodontic brackets
- Etching endodontic posts.



Orthodontic Mini Blaster **Code:** UDELDDES

### Connectors

W&H Connector <b>Code:</b> UDCMS00	Sirona Connector <b>Code:</b> UDCMS02
Midwest Connector <b>Code:</b> UDCMS01	Kavo Connector <b>Code:</b> UDCMS03

### Aluminium Oxide Powder



Pure white aluminium oxide, for surface enhancement prior to bonding to increase bond strength.

50 Micron	<b>Code:</b> TD1732
90 Micron	<b>Code:</b> UDELP90



### EMS<sup>+</sup> AIRFLOW<sup>®</sup> Plus Powder Aluminium Bottle

Single 400g	<b>Code:</b> UAFPP01	<b>Each</b>
Bulk	<b>Code:</b> UAFPP04	<b>Pack of 4</b>








### EMS<sup>+</sup> AIRFLOW<sup>®</sup> Powder Perio 120g

<b>Code:</b> UAFPP00	<b>Pack of 4</b>
----------------------	------------------



### EMS<sup>+</sup> AIRFLOW<sup>®</sup> Classic Powder

	Neutral	300g	<b>Code:</b> UAFHP00	<b>Each</b>
	Assorted	300g	<b>Code:</b> UAFHPTF	<b>Each</b>
	Lemon	300g	<b>Code:</b> UAFHPLM	<b>Each</b>
	Mint	300g	<b>Code:</b> UAFHPMT	<b>Each</b>
	Cherry	300g	<b>Code:</b> UAFHPCH	<b>Each</b>



# MAKE ME SMILE.



**GBT prevents demineralisation, white spots, caries, gingivitis, calculus formation and bad breath for orthodontic patients**

- Patients who wear orthodontic appliances are more likely to be subject to biofilm-related oral pathologies, such as caries or periodontal disease, as some areas in the mouth are more difficult to reach when brushing at home.
- Professional oral hygiene on a regular basis is therefore highly recommended to avoid complications.
- Not only does regular professional oral hygiene reduce the build-up of debris on and around brackets and attachments, but it also helps minimise wire friction.

**Minimally Invasive Prophylaxis on Orthodontic Patients  
Safe For All Orthodontic Appliances**

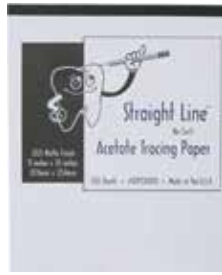


**METAL BRACKETS**

**CLEAR ALIGNERS**



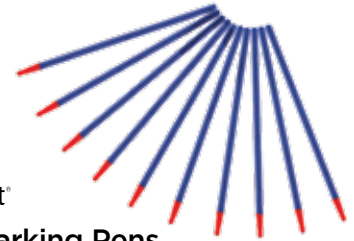
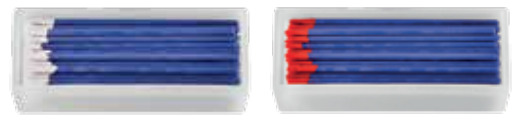




**FLEX** Select  
**Acetate Tracing Paper**

Cephalometric and panoramic, matt finish .003" acetate tracing paper offers excellent pencil adhesion and dimensional stability. Noncurling edges maintain flatness. Matt side accepts pencil or pen markings.

100 Sheets in a 8"x10" Pad **Code:** UGHF427



**FLEX** Select  
**Archwire - Marking Pens**

Disposable Archwire Marking Pencils are made with high quality beeswax tip on a disposable stick which ensures markings will stay in place. It is not water soluble like crayon-based markers.

Red	Pack of 100	<b>Code:</b> UGHF428
White	Pack of 100	<b>Code:</b> UGHF429
Arch Marking Dispenser		<b>Code:</b> UGHF430



**Leone**  
**Cephalometric Protractor**

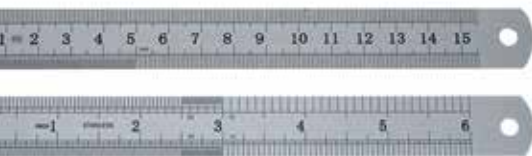
Each **Code:** UPRO013

## Treatment Recording, planning & diagnosis



Stainless steel ruler 6".

Each **Code:** UREPR00



**Overbite/Overjet Ruler**



Stainless steel black.

Each **Code:** UGSC008

Stainless steel.

Each **Code:** UGSC009



**Bow Divider**

Each **Code:** UNNR023



Ruler Stainless steel 150mm/6".

Each **Code:** UNNR018



**1,2,3**

360 Whitening 59

**A**

Adhesives 31-36  
 Aesthetic Attachments 24, 26  
 Aesthetic Wires 16, 17  
 Air-Abrasion 95  
 Airflow 96,97  
 Alginate 68  
 Aligner Foam 67  
 Aligner Pliers See Qr Code  
 Aluminium Oxide 96  
 Archwires 12, 18  
 Auxiliaries 24, 29

**B**

Ball Hooks 24  
 Band Pusher 94  
 Band Seater 94  
 Biomin 64  
 Bite Bumper 28  
 Bite Recorders 68  
 Blancone 62  
 Bleach 59-62  
 Bond A Braid 46  
 Bond Aligner 35  
 Bonding 31  
 Boutique Whitening 60  
 Bow Divider 98  
 Brackets Ceramic 5,11  
 Brackets Ceramic S/L 11  
 Brackets Gold 9  
 Brackets Metal 6,7,9  
 Brackets Metal S/L 4, 9, 10  
 Bracket Remover 76, 90  
 Buccal Tubes 8, 10  
 Burs 43, 45  
 Buttons 24, 25, 26

**C**

Cephalometric Protractor 98  
 Ceramic Brackets 5, 11  
 Chain 20, 21  
 Cheek Retractors 50, 51, 52  
 Chewies 57  
 Class II Corrector 19  
 Clinisept 65  
 Closed Coil Springs 29, 30  
 Coil Springs 29, 30  
 Composite 32, 33, 34-48  
 Composite Removal 44, 45  
 Conditioners 32  
 Contrastors 53  
 Copper Niti Archwires 14  
 Crimpable Ball Hooks 25  
 Crimpable Hooks 24  
 Crimpable Retraction Loops 30  
 Crimpable Stops 24  
 Crimping Plier 25, 91  
 Cutters 69, 70, 86, 87

**D**

Dead Coil 29, 30  
 Debonding Burs 44, 45  
 Debonding Pliers 76, 77, 90  
 Dia Strips 39  
 Diagnostics 98  
 Diamond Strips 38, 39 See Qr Code  
 Discs 43  
 Distalizer 19

Dry Field System 50  
 Dura Chain 20

**E**

Elastics 23  
 Elastomers 20, 21  
 Elastomeric Thread 22  
 Elastomeric Tubing 22  
 Elgiloy Coil Spring 29  
 Ems 96, 97  
 Eruption Appliances 37  
 Etch 31, 34  
 Everstick 47  
 Extrusion Hooks 37  
 Eyelets 25

**F**

First & Final 33  
 Fit Strips 40  
 Flow Tain 48  
 Flowable Composites 48, 49  
 Fluorigard 65  
 Freddy Button 24  
 Fresh & Go 58, 65  
 Fuji Ortho 36

**G**

Goto Composite 34  
 Goodman Torquing Springs 30  
 Gripper Hooks 24  
 Gripper Stops 24

**H**

Heat Activated Archwires 12, 14  
 Height Gauge 94  
 Home Care Packs 66  
 Hooks 24, 25

**I**

Impression Trays 68  
 Instruments 69-94  
 Intensiv 42  
 Interdental Brushes 63  
 Intra Oral Elastics 23  
 Ipr Burs 43, See Qr Code  
 Ipr Strips 38, 39 See Qr Code  
 Ipr Kits 40, 41, 42, See Qr Code

**K**

Kobayashi Hooks 28

**L**

Latex Free Elastics 23  
 Ligature Directors 83, 84, 93  
 Ligature Ties 20, 21  
 Ligature Tuckers 83, 84, 93  
 Light Bond 33  
 Lightning Strips 39 See Qr Code  
 Lingual Buttons 24, 25, 26  
 Lingual Retention 46, 47  
 Lip Retractors 50

**M**

Magic Stops 25  
 Mathieu 81,92  
 Maximum Cure 32  
 Metal Brackets 4, 6, 7, 9, 10  
 Metal Primer 32  
 Metal Retractors 52  
 Mini Blaster 96  
 Mini Mold 26, 27  
 Mirror Handles 56  
 Mirrors 54, 56

Modules 20, 21  
 Morita Power Chain 22  
 Mosquito Burs 43  
 Mosquitos 92  
 Mouthwash 65  
 Multi Strand Wires 18

**N**

Niti Archwires 12, 13, 14  
 Niti Coil Spring 29, 30

**O**

Occlusal Mirrors 54-56  
 Omnicroma 49  
 Open Coil Springs 29, 30  
 Optragate 51  
 Orthoflextech 46  
 Overbite Ruler 98

**P**

Plastic Conditioner 32  
 Polyclear Button 25  
 Porcelain Conditioner 32  
 Porcelain Etch 31  
 Posted Archwires 15  
 Power Chain 20, 21, 22  
 Pumice 33  
 Pad Lock 35  
 Palatal Mirrors 54-56  
 Patient Care 57-68  
 Patient Kits 66,67  
 Pencils 98  
 Photographic Mirrors 54-56  
 Photography 50-56  
 Pliers 69-94  
 Powerchain 20,21  
 Primers 32  
 Probe 83,84,85,93  
 Protractor 98

**Q**

Qwik Strip 40

**R**

Relastics 23  
 Reliabites 57  
 Reliamold 26,27  
 Reliawax 62  
 Rely A Pry 58  
 Retractors 50-52  
 Retainer Boxes 58  
 Retainer Brite 58  
 Retainer Wire 46, 47  
 Retainium 47  
 Retraction Loops 30  
 Retrievers 58  
 Reverse Curve Wires 14  
 Rondoflex 95  
 Rulers 98

**S**

Sealant 32  
 Self-Ligating Brackets 4, 9, 10, 11  
 Separators 22  
 Small Surgery Equipment 96, 97  
 Smart Bond 33  
 Spandex 51  
 Springs 29,30  
 Stainless Steel Coil Spring 29  
 Stainless Steel Wires 12,15  
 Startflow 48  
 Sterilization Cassette 56  
 Stops 24,25  
 Stripfix 41

Strips 38, 39, See Qr Code  
 Super Elastic Niti 12, 13

**T**

Tepe 63  
 Thermal Niti Wires 12, 14  
 Threads & Tubing 22  
 Tma Wires 12, 15  
 Tooth Coloured Eyelets 25  
 Tooth Coloured Wires 16, 17  
 Tooth Coloured Ligatures 28  
 Tooth Mousse 67  
 Toothbrushes 63  
 Toothpaste 64  
 Torquing Plier 74, 75, 89  
 Torquing Springs 30  
 Tracing Paper 98  
 Trays 68  
 Tri Sectional Wires 18  
 Tuckers 83, 93  
 Tweezers 82, 94

**U**

Ultra Sep 34  
 Ultra Band Lok 35

**V**

Vision Flex Diamond Strip 38,  
 See Qr Code

**W**

Wax 62  
 Whitening 59-61  
 Wire Forming Pliers 71-76,  
 88-89  
 Wires 18



**VIEW MORE  
 PRODUCTS  
 ONLINE**



**SCAN THE  
 QR CODE**



**Trycare Dental Rialto Buildings,  
Station Road, Clayton,  
Bradford, BD14 6JA, UK**

**Call: 01274 88 55 44**

**Email: [orthodontics@trycare.co.uk](mailto:orthodontics@trycare.co.uk)**

**[www.trycare.co.uk/dental](http://www.trycare.co.uk/dental)**

**■ ■ XXLITD100**

© 2024 Trycare Limited. All rights reserved. V1 08-24/25

All prices are correct at the time of print. Trycare Limited reserves the right to change prices without prior notice and correct clerical omissions and errors in this publication.

