



Overdenture Attachment Systems

Website



# Every Component Fully Interchangeable with Zest LOCATOR®!



1.5mm 3mm 1mm 2mm 3mm 4mm 5mm 6mm

— Angled — | ————— Straight ————— |

## Spot the Difference!

Order today and see how it compares to Locator®.

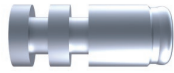
Only £86 or £93 for angled. Includes abutment, housing and all components needed.

# Every Component Fully Interchangeable with Zest LOCATOR®!

## Lab Processing



Impression Coping



Lab Analogue



Spacer Ring



Metal Housing

## Retentive Inserts (For Angled)



0.8 - 1.0lbs



1.8 - 2.0lbs



2.8 - 3.0lbs



0.0lbs

(retentive value)

## Retentive Inserts (For Straight)



1.2lbs



2.4lbs



4lbs



0.0lbs

(retentive value)

## Torque Drivers

(USE WITH STRAIGHT ABUTMENTS)



Torque Wrench  
Tip 4.9 Square  
UKTTS49



Torque Wrench  
Tip Round  
UKTTRND



Torque Wrench  
Tip 6.3 Hex  
UKTTH63



Handpiece  
Driver Tip  
UKLDTIP



Magic Tool  
Insert Insertion

(USE WITH ANGLED ABUTMENTS)



Hex 1.27mm  
10mm or 15mm  
RS6080 RS6082



Website

To order, visit our  
website or call ...  
01274 88 55 44

Trycare

# Stock List

<b>3i IMPLANT INNOVATIONS</b>	<b>1mm</b>	<b>2mm</b>	<b>3mm</b>	<b>4mm</b>	<b>5mm</b>	<b>6mm</b>	<b>Ang 1.5mm</b>	<b>Ang 3.0mm</b>
<b>3.75 Miniplant (hex)</b>	UKNB401	UKNB402	UKNB403	UKNB404	UKNB405	UKNB406	UKNB4015	UKNB4030
<b>4.0 Cylindrical (Hex)</b>	UKNB401	UKNB402	UKNB403	UKNB404	UKNB405	UKNB406	UKNB4015	UKNB4030
<b>3.25 Micro Mini (Hex)</b>	UKIM3251	UKIM3252	UKIM3253	UKIM3254	UKIM3255	UKIM3256	UKIM32515	UKIM32530
<b>3i 5.0 (Hex)</b>	UKIE501	UKIE502	UKIE503	UKIE504	UKIE505	UKIE506	UKIE5AN1	UKIE5AN3
<b>Certain 3.4</b>	UK3C341	UK3C342	UK3C343	UK3C344	UK3C345	UK3C346	UK3C3A1	UK3C3A3
<b>Certain 4.1</b>	UK3C411	UK3C412	UK3C413	UK3C414	UK3C415	UK3C416	UK3C4A1	UK3C4A3
<b>Certain 5.0</b>	UKCE501	UKCE502	UKCE503	UKCE504	UKCE505	UKCE506		

<b>ACE SURGICAL</b>	<b>1mm</b>	<b>2mm</b>	<b>3mm</b>	<b>4mm</b>	<b>5mm</b>	<b>6mm</b>	<b>Ang 1.5mm</b>	<b>Ang 3.0mm</b>
<b>4.0</b>	UKNB401	UKNB402	UKNB403	UKNB404	UKNB405	UKNB406	UKNB4015	UKNB4030
<b>5.0</b>	UKIE501	UKIE502	UKIE503	UKIE504	UKIE505	UKIE506	UKIE5AN1	UKIE5AN3

<b>ADIN IMPLANTS</b>	<b>1mm</b>	<b>2mm</b>	<b>3mm</b>	<b>4mm</b>	<b>5mm</b>	<b>6mm</b>	<b>Ang 1.5mm</b>	<b>Ang 3.0mm</b>
<b>CloseFit NP</b>	UKCF301	UKCF302	UKCF303	UKCF304	UKCF305	UKCF306	UKCF15A	UKCF30A
<b>CloseFit RP</b>	UKRP351	UKRP352	UKRP353	UKRP354	UKRP355	UKRP356	UKRP3515	UKRP3530
<b>CloseFit WP</b>	UKWP351	UKWP352	UKWP353	UKWP354	UKWP355	UKWP356	UKWP3515	UKWP3530
<b>Touareg S</b>	UKZS1MM	UKZS2MM	UKZS3MM	UKZS4MM	UKZS5MM	UKZS6MM	UKZSANG	UKZSAN3
<b>UniFit</b>	UKUF301	UKUF302	UKUF303	UKUF304	UKUF305	UKUF306	UKUFAN1	UKUFAN3

<b>ALPHA BIO</b>	<b>1mm</b>	<b>2mm</b>	<b>3mm</b>	<b>4mm</b>	<b>5mm</b>	<b>6mm</b>	<b>Ang 1.5mm</b>	<b>Ang 3.0mm</b>
<b>Atie 4.1</b>	UKNB401	UKNB402	UKNB403	UKNB404	UKNB405	UKNB406	UKNB4015	UKNB4030
<b>Atie 5.0</b>	UKIE501	UKIE502	UKIE503	UKIE504	UKIE505	UKIE506	UKIE5AN1	UKIE5AN3
<b>SPI</b>	UKZS1MM	UKZS2MM	UKZS3MM	UKZS4MM	UKZS5MM	UKZS6MM	UKZSANG	UKZSAN3
<b>DFI</b>	UKZS1MM	UKZS2MM	UKZS3MM	UKZS4MM	UKZS5MM	UKZS6MM	UKZSANG	UKZSAN3
<b>ATID</b>	UKZS1MM	UKZS2MM	UKZS3MM	UKZS4MM	UKZS5MM	UKZS6MM	UKZSANG	UKZSAN3
<b>ITO</b>	UKST401	UKST402	UKST403	UKST404	UKST405	UKST406	UKST4A1	UKST4A3

**ANY IMPLANT SYSTEMS NOT ON THE LIST ARE NOT CURRENTLY LISTED BY KERATOR.**

<b>ASTRA TECH</b>	<b>1mm</b>	<b>2mm</b>	<b>3mm</b>	<b>4mm</b>	<b>5mm</b>	<b>6mm</b>	<b>Ang 1.5mm</b>	<b>Ang 3.0mm</b>
<b>3.5</b>	UKSA351	UKSA352	UKSA353	UKSA354	UKSA355	UKSA356	UKSA3A1	UKSA3A3
<b>4.0 ST</b>	UKAS401	UKAS402	UKAS403	UKAS404	UKAS405	UKAS406	UKAS4A1	UKAS4A3
<b>Astra (Yellow) 1.6 Thread 3.0 TX</b>	UKAT301	UKAT302	UKAT303	UKAT304	UKAT305	UKAT306		
<b>Astra (Aqua) 1.6 Thread 3.5, 4.0 TX</b>	UKAT401	UKAT402	UKAT403	UKAT404	UKAT405	UKAT406	UKAT4015	UKAT4030
<b>4.5, 5.0 ST</b>	UKAS501	UKAS502	UKAS503	UKAS504	UKAS505	UKAS506	AS5AN1.5	AS5AN3.0
<b>Astra (Lilac) 5.0 TX</b>	UKAS501	UKAS502	UKAS503	UKAS504	UKAS505	UKAS506		
<b>Astra EV 3.0</b>	UKEV301	UKEV302	UKEV303	UKEV304	UKEV305	UKEV306		
<b>Astra EV 3.6</b>	UKEV361	UKEV362	UKEV363	UKEV364	UKEV365	UKEV366	UKEV3615	
<b>Astra EV 4.2</b>	UKBL501	UKBL502	UKBL503	UKBL504	UKBL505	UKBL506	UKBL5AN1	UKBL5AN3
<b>AstrA EV 5.4</b>	UKEV541	UKEV542	UKEV543	UKEV544	UKEV545	UKEV546	UKEV54AN1	UKEV54A3
<b>Astra Osseospeed 4 1.6 thread</b>	UKAT401	UKAT402	UKAT403	UKAT404	UKAT405	UKAT406	UKAT4015	UKAT4030
<b>Astra MT Osseospeed 2.0mm thread/Microthread</b>	UKAS401	UKAS402	UKAS403	UKAS404	UKAS405	UKAS406	UKAS4A1	UKAS4A3

<b>ATTACHMENTS INTERNATIONAL</b>	<b>1mm</b>	<b>2mm</b>	<b>3mm</b>	<b>4mm</b>	<b>5mm</b>	<b>6mm</b>	<b>Ang 1.5mm</b>	<b>Ang 3.0mm</b>
<b>IMZ 3.3 (Hex)</b>	UKNB401	UKNB402	UKNB403	UKNB404	UKNB405	UKNB406	UKNB4015	UKNB4030
<b>IMZ 4.0 (Hex)</b>	UKNB401	UKNB402	UKNB403	UKNB404	UKNB405	UKNB406	UKNB4015	UKNB4030

<b>BEGO IMPLANT</b>	<b>1mm</b>	<b>2mm</b>	<b>3mm</b>	<b>4mm</b>	<b>5mm</b>	<b>6mm</b>	<b>Ang 1.5mm</b>	<b>Ang 3.0mm</b>
<b>3.75</b>	UKB3751	UKB3752	UKB3753	UKB3754	UKB3755	UKB3756	be37an1.5	be37an3.0
<b>4.1</b>	UKBE411	UKBE412	UKBE413	UKBE414	UKBE415	UKBE416	be41an1.5	be41an3.0
<b>4.5</b>	UKBE451	UKBE452	UKBE453	UKBE454	UKBE455	UKBE456		

<b>BIO HORIZON</b>	<b>1mm</b>	<b>2mm</b>	<b>3mm</b>	<b>4mm</b>	<b>5mm</b>	<b>6mm</b>	<b>Ang 1.5mm</b>	<b>Ang 3.0mm</b>
<b>Maestro 3.5 Yellow (Hex)</b>	UKHM351	UKHM352	UKHM353	UKHM354	UKHM355	UKHM356	UKHM3515	UKHM3530
<b>Maestro 4.0 Green (Hex)</b>	UKHM401	UKHM402	UKHM403	UKHM404	UKHM405	UKHM406	UKHM4015	UKHM4030
<b>Prodigy 3.5 Yellow (Internal)</b>	UKZS1MM	UKZS2MM	UKZS3MM	UKZS4MM	UKZS5MM	UKZS6MM	UKZSANG	UKZSAN3
<b>Prodigy 4.0 Green (Internal)</b>	UKPA451	UKPA452	UKPA453	UKPA454	UKPA455	UKPA456	UKPA45AN1	UKPA45AN3
<b>Laserlok3.8 Taper Str (Internal)</b>	UKZS1MM						UKZSANG	UKZSAN3

**ANY IMPLANT SYSTEMS NOT ON THE LIST ARE NOT CURRENTLY LISTED BY KERATOR.**

<b>BIO-LOK</b>	1mm	2mm	3mm	4mm	5mm	6mm	Ang 1.5mm	Ang 3.0mm
5.0 Red (Hex) Internal	UKBL501	UKBL502	UKBL503	UKBL504	UKBL505	UKBL506		
4.0 Yellow (Hex) Internal	UKNB401	UKNB402	UKNB403	UKNB404	UKNB405	UKNB406	UKNB4015	UKNB4030

<b>BIO-TIS</b>	1mm	2mm	3mm	4mm	5mm	6mm	Ang 1.5mm	Ang 3.0mm
Spider I 3.7, 4.1, 4.8	UKSW481	UKSW482	UKSW483	UKSW484	UKSW485	UKSW486		
Spider II 3.3, 3.7, 4.1	UKZS1MM	UKZS2MM	UKZS3MM	UKZS4MM	UKZS5MM	UKZS6MM	UKZSANG	UKZSAN3
Spider II 4.8	UKST401	UKST402	UKST403	UKST404	UKST405	UKST406		

<b>BREDDENT</b>	1mm	2mm	3mm	4mm	5mm	6mm	Ang 1.5mm	Ang 3.0mm
Blue Sky	UKDU401	UKDU402	UKDU403	UKDU404	UKDU405	UKDU406		

<b>BTI</b>	1mm	2mm	3mm	4mm	5mm	6mm	Ang 1.5mm	Ang 3.0mm
External Universal Platform / Universal plus 4.1	UKNB401	UKNB402	UKNB403	UKNB404	UKNB405	UKNB406		

<b>BUCK MEDICAL RESEARCH</b>	1mm	2mm	3mm	4mm	5mm	6mm	Ang 1.5mm	Ang 3.0mm
BMR	UKST401	UKST402	UKST403	UKST404	UKST405	UKST406	UKST4A1	UKST4A3

<b>CAMLOG</b>	1mm	2mm	3mm	4mm	5mm	6mm	-	-
3.3	UKCAM331	UKCAM332	UKCAM333	UKCAM334	UKCAM335	UKCAM336		
3.8	UKCAM381	UKCAM382	UKCAM383	UKCAM384	UKCAM385	UKCAM386		
4.3	UKCAM431	UKCAM432	UKCAM433	UKCAM434	UKCAM435	UKCAM436		
5.0	UKCAM501	UKCAM502	UKCAM503	UKCAM504	UKCAM505	UKCAM506		
6.0	UKCAM601	UKCAM602	UKCAM603	UKCAM604	UKCAM605	UKCAM606		

**ANY IMPLANT SYSTEMS NOT ON THE LIST ARE NOT CURRENTLY LISTED BY KERATOR.**

<b>CHAORUM</b>	1mm	2mm	3mm	4mm	5mm	6mm	Ang 1.5mm	Ang 3.0mm
Submerged	UKAS401	UKAS402	UKAS403	UKAS404	UKAS405	UKAS406	UKAS4A1	UKAS4A3
Internal 3.3, 4.0, 4.8	UKST401	UKST402	UKST403	UKST404	UKST405	UKST406	UKST4A1	UKST4A3

<b>COWELL MEDI</b>	1mm	2mm	3mm	4mm	5mm	6mm	Ang 1.5mm	Ang 3.0mm
Internal 3.5	UKCWT401	UKCWT402	UKCWT403	UKCWT404	UKCWT405	UKCWT406	CWIT4AN1.5	CWIT4AN3.0
External 3.3	UKNB331	UKNB332	UKNB333	UKNB334	UKNB335	UKNB336	UKNB3315	UKNB3330
External 4.0	UKNB401	UKNB402	UKNB403	UKNB404	UKNB405	UKNB406	UKNB4015	UKNB4030
External 5.0	UKNB501	UKNB502	UKNB503	UKNB504	UKNB505	UKNB506	UKNB5015	UKNB5030
SubHex	UKAS401	UKAS402	UKAS403	UKAS404	UKAS405	UKAS406	UKAS4A1	UKAS4A3
Atlas Internal 3.5, 4.0, 5.0	UKCWT401	UKCWT402	UKCWT403	UKCWT404	UKCWT405	UKCWT406		

<b>DENTIUM</b>	1mm	2mm	3mm	4mm	5mm	6mm	Ang 1.5mm	Ang 3.0mm
Implantium 3.4/3.8/4.3/4.8/ Superline Bone Level (FX)	UKAS401	UKAS402	UKAS403	UKAS404	UKAS405	UKAS406	UKAS4A1	UKAS4A3
SimpleLine 4.8	UKST401	UKST402	UKST403	UKST404	UKST405	UKST406	UKST4A1	UKST4A3
SimpleLine 6.5	UKAT651	UKAT652	UKAT653	UKAT654	UKAT655	UKAT656		

<b>DENTSPLY FRIADENT</b>	1mm	2mm	3mm	4mm	5mm	6mm	Ang 1.5mm	Ang 3.0mm
Ankylos 3.5, 4.5, 5.5 (IMPLANT NLA)	UKA3451	UKA3452	UKA3453	UKA3454	UKA3455	UKA3456		
Ankylos Original & CX	UKAOCX1	UKAOCX2	UKAOCX3	UKAOCX4	UKAOCX5	UKAOCX6	UKAOCX15	UKAOCX30
Frialit-2 & XIVE 3.4	UKFX341	UKFX342	UKFX343	UKFX344	UKFX345	UKFX346	UKFX34AN1	UKFX34AN3
Frialit-2 & XIVE 3.8	UKFX381	UKFX382	UKFX383	UKFX384	UKFX385	UKFX386	UKFX38AN1	UKFX38AN3

<b>DIO</b>	1mm	2mm	3mm	4mm	5mm	6mm	Ang 1.5mm	Ang 3.0mm
FSN 3.3	UKNB331	UKNB332	UKNB333	UKNB334	UKNB335	UKNB336	UKNB3315	UKNB3330
FSN 4.0	UKNB401	UKNB402	UKNB403	UKNB404	UKNB405	UKNB406	UKNB4015	UKNB4030
FSN 5.0, 5.5	UKNB501	UKNB502	UKNB503	UKNB504	UKNB505	UKNB506	UKNB5015	UKNB5030

**ANY IMPLANT SYSTEMS NOT ON THE LIST ARE NOT CURRENTLY LISTED BY KERATOR.**

<b>DIO</b>	<b>1mm</b>	<b>2mm</b>	<b>3mm</b>	<b>4mm</b>	<b>5mm</b>	<b>6mm</b>	<b>Ang 1.5mm</b>	<b>Ang 3.0mm</b>
<b>FST 5.0</b>	UKIE501	UKIE502	UKIE503	UKIE504	UKIE505	UKIE506	UKIE5AN1	UKIE5AN3
<b>Steady Submerged UF II 3.0 / 3.3 narrow</b>	UKSA381	UKSA382	UKSA383	UKSA384	UKSA385	UKSA386		
<b>Steady Submerged UF 4.0</b>	UKG4011	UKG4012	UKG4013	UKG4014	UKG4015	UKG4016		
<b>SM Narrow 3.8, 4.1</b>	UKD3801	UKD3802	UKD3803	UKD3804	UKD3805	UKD3806	UKD3AN1	UKD3AN3
<b>SM Regular Wide 4.5, 5.3 platform 4.5, Sub 4.5</b>	UKD4531	UKD4532	UKD4533	UKD4534	UKD4535	UKD4536	D45an1.5	D45an3.0
<b>Steady Internal 3.5, 4.1, 4.8, PSI, IFI</b>	UKCWT401	UKCWT402	UKCWT403	UKCWT404	UKCWT405	UKCWT406		

<b>EUROTEKNIK</b>	<b>1mm</b>	<b>2mm</b>	<b>3mm</b>	<b>4mm</b>	<b>5mm</b>	<b>6mm</b>	<b>Ang 1.5mm</b>	<b>Ang 3.0mm</b>
<b>Aesthetica 4.2, 4.8</b>	UKCWT401	UKCWT402	UKCWT403	UKCWT404	UKCWT405	UKCWT406	CWIT4AN1.5	CWIT4AN3.0
<b>Natural 4.0</b>	UKAS401	UKAS402	UKAS403	UKAS404	UKAS405	UKAS406		
<b>Natural 4.5</b>	UKAS401	UKAS402	UKAS403	UKAS404	UKAS405	UKAS406		

<b>HI-TEC</b>	<b>1mm</b>	<b>2mm</b>	<b>3mm</b>	<b>4mm</b>	<b>5mm</b>	<b>6mm</b>	<b>Ang 1.5mm</b>	<b>Ang 3.0mm</b>
<b>Self Thread 3.5, 3.75</b>	UKZS1MM	UKZS2MM	UKZS3MM	UKZS4MM	UKZS5MM	UKZS6MM	UKZSANG	UKZSAN3
<b>Logic LGI 5.0</b>	UKWP351	UKWP352	UKWP353	UKWP354	UKWP355	UKWP356	UKWP3515	UKWP3530
<b>Vision VRI 5.0</b>	UKNS501	UKNS502	UKNS503	UKNS504	UKNS505	UKNS506		

<b>IMPLANT DIRECT</b>	<b>1mm</b>	<b>2mm</b>	<b>3mm</b>	<b>4mm</b>	<b>5mm</b>	<b>6mm</b>	<b>Ang 1.5mm</b>	<b>Ang 3.0mm</b>
<b>Legacy 3.0</b>	UKLE301	UKLE302	UKLE303	UKLE304	UKLE305	UKLE306		
<b>Replant</b>	UKNS351	UKNS352	UKNS353	UKNS354	UKNS355	UKNS356	UKNS3515	UKNS3530
<b>Legacy 3.5</b>	UKZS1MM	UKZS2MM	UKZS3MM	UKZS4MM	UKZS5MM	UKZS6MM	UKZSANG	UKZSAN3
<b>Legacy 4.5</b>	UKPA451	UKPA452	UKPA453	UKPA454	UKPA455	UKPA456	UKPA45AN1	UKPA45AN3

<b>IMTEC CORPORATION</b>	<b>1mm</b>	<b>2mm</b>	<b>3mm</b>	<b>4mm</b>	<b>5mm</b>	<b>6mm</b>	<b>Ang 1.5mm</b>	<b>Ang 3.0mm</b>
<b>Self Tapping 3.75 (Hex)</b>	UKNB401	UKNB402	UKNB403	UKNB404	UKNB405	UKNB406	UKNB4015	UKNB4030
<b>Universal 3.4, 4.0 (Hex)</b>	UKNB401	UKNB402	UKNB403	UKNB404	UKNB405	UKNB406	UKNB4015	UKNB4030

**ANY IMPLANT SYSTEMS NOT ON THE LIST ARE NOT CURRENTLY LISTED BY KERATOR.**

<b>INNOVA</b>	1mm	2mm	3mm	4mm	5mm	6mm	Ang 1.5mm	Ang 3.0mm
4.1 Endopore 0.7mm Hex	UKNB401	UKNB402	UKNB403	UKNB404	UKNB405	UKNB406	UKNB4015	UKNB4030
3.25 Entegra 0.7mm Hex 4.1 Platform 0.3B	UKNB401	UKNB402	UKNB403	UKNB404	UKNB405	UKNB406	UKNB4015	UKNB4030
4.0 Entegra 0.7mm Hex	UKNB401	UKNB402	UKNB403	UKNB404	UKNB405	UKNB406	UKNB4015	UKNB4030
5.0 Endopore 0.9mm Hex	UKIE501	UKIE502	UKIE503	UKIE504	UKIE505	UKIE506	UKIE5AN1	UKIE5AN3
3.5, 4.0 Endopore 0.9mm Hex	UKIN351	UKIN352	UKIN353	UKIN354	UKIN355	UKIN356	IN35AN	IN35AN
3.25 Entegra 0.9mm Hex 3.5 Platform 03M	UKIN351	UKIN352	UKIN353	UKIN354	UKIN355	UKIN356	IN35AN	IN35AN
4.8 Endopore (Internal Connection)	UKCWT401	UKCWT402	UKCWT403	UKCWT404	UKCWT405	UKCWT406		

<b>INTRA LOCK SYSTEM INTERNATIONAL</b>	1mm	2mm	3mm	4mm	5mm	6mm	Ang 1.5mm	Ang 3.0mm
3.75, 4.0 Hex Threaded	UKNB401	UKNB402	UKNB403	UKNB404	UKNB405	UKNB406	UKNB4015	UKNB4030
4.3 Threaded Conic	UKSR431	UKSR432	UKSR433	UKSR434	UKSR435	UKSR436		

<b>ITI STRAUMANN</b>	1mm	2mm	3mm	4mm	5mm	6mm	Ang 1.5mm	Ang 3.0mm
Anthogyr Axiom	UKAX401	UKAX402	UKAX403	UKAX404	UKAX405	UKAX406	UKAX4AN	UKAX4A3
Soft Tissue Level 3.3, 4.1, 4.8 (standard plus)	UKST401	UKST402	UKST403	UKST404	UKST405	UKST406	UKST4A1	UKST4A3
Soft Tissue Level 3.3 nnc (narrow collar)	UKST401	UKST402	UKST403	UKST404	UKST405	UKST406	UKST4A1	UKST4A3
Soft Tissue Level 6.5	UKAT651	UKAT652	UKAT653	UKAT654	UKAT655	UKAT656		
BLX RP	UKBX401	UKBX402	UKBX403	UKBX404	UKBX405	UKBX406	UKBX4AN1	UKBX4AN3
BLX WP	UKBX501	UKBX502	UKBX503	UKBX504	UKBX505	UKBX506	UKBX5AN1	UKBX5AN3
Standard RN	UKST401	UKST402	UKST403	UKST404	UKST405	UKST406		
Bone Level (CrossFit) NC	UKSBNC1	UKSBNC2	UKSBNC3	UKSBNC4	UKSBNC5	UKSBNC6	UKSBNCA	UKSBNCA3

<b>LIFECORE BIOMEDICAL</b>	1mm	2mm	3mm	4mm	5mm	6mm	Ang 1.5mm	Ang 3.0mm
Restore 3.75, 4.0 (Hex)	UKNB401	UKNB402	UKNB403	UKNB404	UKNB405	UKNB406	UKNB4015	UKNB4030
Sustain 4.2 (Hex)	UKNB401	UKNB402	UKNB403	UKNB404	UKNB405	UKNB406	UKNB4015	UKNB4030
Restore 3.3 SD (Hex)	UKLR331	UKLR332	UKLR333	UKLR334	UKLR335	UKLR336		
Renova 3.75	UKNS351	UKNS352	UKNS353	UKNS354	UKNS355	UKNS356	UKNS3515	UKNS3530
Stage 1	UKST401	UKST402	UKST403	UKST404	UKST405	UKST406	UKST4A1	UKST4A3

**ANY IMPLANT SYSTEMS NOT ON THE LIST ARE NOT CURRENTLY LISTED BY KERATOR.**



<b>MEGAGEN</b>	<b>1mm</b>	<b>2mm</b>	<b>3mm</b>	<b>4mm</b>	<b>5mm</b>	<b>6mm</b>	<b>Ang 1.5mm</b>	<b>Ang 3.0mm</b>
Exfeel External 3.3	UKNB331	UKNB332	UKNB333	UKNB334	UKNB335	UKNB336	UKNB3315	UKNB3330
Exfeel External 4.0	UKNB401	UKNB402	UKNB403	UKNB404	UKNB405	UKNB406	UKNB4015	UKNB4030
Exfeel External 5.0, 5.5	UKIE501	UKIE502	UKIE503	UKIE504	UKIE505	UKIE506	UKIE5AN1	UKIE5AN3
EZ Plus 3.5	UKAT401	UKAT402	UKAT403	UKAT404	UKAT405	UKAT406	UKAT4015	UKAT4030
EZ Plus 4.0, 4.5, 5.0	UKAS401	UKAS402	UKAS403	UKAS404	UKAS405	UKAS406	UKAS4A1	UKAS4A3
Magafix 3.8, 4.3, 4.8 (Hex Type)	UKAS401	UKAS402	UKAS403	UKAS404	UKAS405	UKAS406	UKAS4A1	UKAS4A3
Exfeel Internal 3.5, 4.1, 4.8	UKST401	UKST402	UKST403	UKST404	UKST405	UKST406	UKST4A1	UKST4A3
Mini	UKMN301	UKMN302	UKMN303	UKMN304	UKMN305	UKMN306	UKMN3A1	UKMN3A3
Anyridge	UKAR401	UKAR402	UKAR403	UKAR404	UKAR405	UKAR406	UKAR4AN1	UKAR4AN3

<b>MIS MEDICAL</b>	<b>1mm</b>	<b>2mm</b>	<b>3mm</b>	<b>4mm</b>	<b>5mm</b>	<b>6mm</b>	<b>Ang 1.5mm</b>	<b>Ang 3.0mm</b>
External Hex Standard	UKNB401	UKNB402	UKNB403	UKNB404	UKNB405	UKNB406	UKNB4015	UKNB4030
External Hex Wide	UKIE501	UKIE502	UKIE503	UKIE504	UKIE505	UKIE506	UKIE5AN1	UKIE5AN3
Internal Hex Standard Seven	UKZS1MM	UKZS2MM	UKZS3MM	UKZS4MM	UKZS5MM	UKZS6MM	UKZSANG	UKZSAN3
Internal Hex Wide 5.0	UKPA451	UKPA452	UKPA453	UKPA454	UKPA455	UKPA456	UKPA45AN1	UKPA45AN3
Internal Octagon Mistral	UKST401	UKST402	UKST403	UKST404	UKST405	UKST406	UKST4A1	UKST4A3

<b>NEOBIOTECH</b>	<b>1mm</b>	<b>2mm</b>	<b>3mm</b>	<b>4mm</b>	<b>5mm</b>	<b>6mm</b>	<b>Ang 1.5mm</b>	<b>Ang 3.0mm</b>
Sinus Quick EB 3.5	UKNB331	UKNB332	UKNB333	UKNB334	UKNB335	UKNB336	UKNB3315	UKNB3330
Sinus Quick EB 4.0	UKNB401	UKNB402	UKNB403	UKNB404	UKNB405	UKNB406	UKNB4015	UKNB4030
Sinus Quick EB 5.0/6.0/ Branemark Type Hex 3.4	UKNB501	UKNB502	UKNB503	UKNB504	UKNB505	UKNB506	UKNB5015	UKNB5030
Sinus Quick EB 5.0	UKIE501	UKIE502	UKIE503	UKIE504	UKIE505	UKIE506	UKIE5AN1	UKIE5AN3
Sinus Quick IT 3.5, 4.0, 5.0	UKST401	UKST402	UKST403	UKST404	UKST405	UKST406	UKST4A1	UKST4A3
Internal 3.3, 4.1, 4.8	UKST401	UKST402	UKST403	UKST404	UKST405	UKST406	UKST4A1	UKST4A3

<b>NEOSS - non hexed - Internal Type</b>	<b>1mm</b>	<b>2mm</b>	<b>3mm</b>	<b>4mm</b>	<b>5mm</b>	<b>6mm</b>	<b>Ang 1.5mm</b>	<b>Ang 3.0mm</b>
Internal (Proactive)3.5, 4.0, 4.5, 5.0, 5.5	ZI401	ZI402	ZI403	ZI404	ZI405	ZI406	ZI40AN1.5	ZI40AN3.0

**ANY IMPLANT SYSTEMS NOT ON THE LIST ARE NOT CURRENTLY LISTED BY KERATOR.**

<b>NOBEL BIOCARE</b>	<b>1mm</b>	<b>2mm</b>	<b>3mm</b>	<b>4mm</b>	<b>5mm</b>	<b>6mm</b>	<b>Ang 1.5mm</b>	<b>Ang 3.0mm</b>
<b>Branemark 3.3 NP (ext Hex), Speedy Groovy</b>	UKNB331	UKNB332	UKNB333	UKNB334	UKNB335	UKNB336	UKNB3315	UKNB3330
<b>Branemark 3.75/4.0/5.0 RP ext Hex/Speedy Groovy</b>	UKNB401	UKNB402	UKNB403	UKNB404	UKNB405	UKNB406	UKNB4015	UKNB4030
<b>Branemark 5.0 WP (Hex), Speedy Groovy</b>	UKNB501	UKNB502	UKNB503	UKNB504	UKNB505	UKNB506	UKNB5015	UKNB5030
<b>Hex-Lock (HL) 5.0 (Hex)</b>	UKSR501	UKSR502	UKSR503	UKSR504	UKSR505	UKSR506	SR5AN	SR5AN
<b>Replace 3.5 (Hex) EXT TYPE Angle corrected Tri-Lobe</b>	UKNR351	UKNR352	UKNR353	UKNR354	UKNR355	UKNR356	UKNR35A	UKNR35A3
<b>Replace 4.3 (Hex) EXT TYPE Angle corrected Tri-Lobe</b>	UKSR431	UKSR432	UKSR433	UKSR434	UKSR435	UKSR436	SR43AN	SR43AN
<b>Replace 5.0 (Hex) EXT TYPE Angle corrected Tri-Lobe</b>	UKSR501	UKSR502	UKSR503	UKSR504	UKSR505	UKSR506	SR5AN	SR5AN
<b>SterioSS 3.25</b>	UKSO351	UKSO352	UKSO353	UKSO354	UKSO355	UKSO356		
<b>Active 3.5, 3.75 Parallel, Replace int Conical Connection</b>	UKRP351	UKRP352	UKRP353	UKRP354	UKRP355	UKRP356	UKRP3515	UKRP3530
<b>Active 4.3, 5.0, Replace int Conical Connection</b>	UKWP351	UKWP352	UKWP353	UKWP354	UKWP355	UKWP356	UKWP3515	UKWP3530
<b>Select Replace 3.5/ speedy replace np</b>	UKNS351	UKNS352	UKNS353	UKNS354	UKNS355	UKNS356	UKNS3515	UKNS3530
<b>Select Replace 4.3/ speedy replace rp</b>	UKNS431	UKNS432	UKNS433	UKNS434	UKNS435	UKNS436	UKNS4315	UKNS4330
<b>Select Replace 5.0/ speedy replace wp</b>	UKNS501	UKNS502	UKNS503	UKNS504	UKNS505	UKNS506	UKNS50A1	UKNS50A3

<b>OSSTEM</b>	<b>1mm</b>	<b>2mm</b>	<b>3mm</b>	<b>4mm</b>	<b>5mm</b>	<b>6mm</b>	<b>Ang 1.5mm</b>	<b>Ang 3.0mm</b>
<b>US 3.5, SS 3.5</b>	UKNB331	UKNB332	UKNB333	UKNB334	UKNB335	UKNB336	UKNB3315	UKNB3330
<b>US 3.75, 4.1</b>	UKNB401	UKNB402	UKNB403	UKNB404	UKNB405	UKNB406	UKNB4015	UKNB4030
<b>US 5.0, 5.5 (5.1P)</b>	UKNB501	UKNB502	UKNB503	UKNB504	UKNB505	UKNB506	UKNB5015	UKNB5030
<b>US 5.0, 5.5 (5.0P)</b>	UKIE501	UKIE502	UKIE503	UKIE504	UKIE505	UKIE506	UKIE5AN1	UKIE5AN3
<b>GS 3.5 TS, TSIII (TSIII 3.0)</b>	UKAG351	UKAG352	UKAG353	UKAG354	UKAG355	UKAG356		
<b>GS 4.0, 4.5, 5.0 TS, TSII</b>	UKG4011	UKG4022	UKG4033	UKG4044	UKG4055	UKG4066	G4AN	G4AN
<b>SS 4.1, 4.8</b>	UKST401	UKST402	UKST403	UKST404	UKST405	UKST406	UKST4A1	UKST4A3

**ANY IMPLANT SYSTEMS NOT ON THE LIST ARE NOT CURRENTLY LISTED BY KERATOR.**

<b>OSTEO CARE</b>	1mm	2mm	3mm	4mm	5mm	6mm	Ang 1.5mm	Ang 3.0mm
3.8	UKOC1MM	UKOC2MM	UKOC3MM	UKOC4MM	UKOC5MM	UKOC6MM		

<b>OSTEO IMPLANT CORPORATION</b>	1mm	2mm	3mm	4mm	5mm	6mm	Ang 1.5mm	Ang 3.0mm
3.25 SD, 3.75 ST, 4.0 DT	UKNB401	UKNB402	UKNB403	UKNB404	UKNB405	UKNB406	UKNB4015	UKNB4030

<b>SHINHUNG</b>	1mm	2mm	3mm	4mm	5mm	6mm	Ang 1.5mm	Ang 3.0mm
External NP	UKNB331	UKNB332	UKNB333	UKNB334	UKNB335	UKNB336	UKNB3315	UKNB3330
External RP	UKNB401	UKNB402	UKNB403	UKNB404	UKNB405	UKNB406	UKNB4015	UKNB4030
External WP	UKNB501	UKNB502	UKNB503	UKNB504	UKNB505	UKNB506	UKNB5015	UKNB5030
M-Internal Submerged Mini/Regular	UKSA351	UKSA352	UKSA353	UKSA354	UKSA355	UKSA356	UKSA3A1	UKSA3A3
LUNA-Internal Submerged NP	UKAG351	UKAG352	UKAG353	UKAG354	UKAG355	UKAG356		
LUNA-Internal Submerged RP	UKAG401	UKAG402	UKAG403	UKAG404	UKAG405	UKAG406		

<b>SOUTHERN DENTAL</b>	1mm	2mm	3mm	4mm	5m	6mm	Ang 1.5mm	Ang 3.0mm
IBNT 3.25mm	UI- KIM3251	UI- KIM3252	UI- KIM3253	UI- KIM3254	UI- KIM3255	UI- KIM3256		
BAT 5MM	UKCE501	UKCE502	UKCE503	UKCE504	UKCE505	UKCE506		
IBT	UKNB401	UKNB402	UKNB403	UKNB404	UKNB405	UKNB406	UKNB4015	UKNB4030
IBS	UKNB401	UKNB402	UKNB403	UKNB404	UKNB405	UKNB406	UKNB4015	UKNB4030
OCT-XP (ITC)	UK- CWT401	UK- CWT402	UK- CWT403	UK- CWT404	UK- CWT405	UK- CWT406	CWIT4AN1.5	CWIT4AN3.0
EXT Hex 4.05 / 4.60	UKNB401	UKNB402	UKNB403	UKNB404	UKNB405	UKNB406	UKNB4015	UKNB4030

<b>TRI</b>	1mm	2mm	3mm	4mm	5mm	6mm	Ang 1.5mm	Ang 3.0mm
Tri - Vent 3.75, 4.1, 4.7	UKZS1MM	UKZS2MM	UKZS3MM	UKZS4MM	UKZS5MM	UKZS6MM	UKZSANG	UKZSAN3

ANY IMPLANT SYSTEMS NOT ON THE LIST ARE NOT CURRENTLY LISTED BY KERATOR.

UFITIMPLANT	1mm	2mm	3mm	4mm	5mm	6mm	Ang 1.5mm	Ang 3.0mm
GT	UKG4011	UKG4022	UKG4033	UKG4044	UKG4055	UKG4066		
Storm, VT	UKST401	UKST402	UKST403	UKST404	UKST405	UKST406	UKST4A1	UKST4A3

ZIMMER	1mm	2mm	3mm	4mm	5mm	6mm	Ang 1.5mm	Ang 3.0mm
Bio Vent 3.5, Core Vent 4.3, Micro Vent 3.25	UKZS1MM	UKZS2MM	UKZS3MM	UKZS4MM	UKZS5MM	UKZS6MM	UKZSANG	UKZSAN3
Screw Vent 3.3, 3.7, 4.1	UKZS1MM	UKZS2MM	UKZS3MM	UKZS4MM	UKZS5MM	UKZS6MM	UKZSANG	UKZSAN3
Bio Vent 4.5, Core Vent 5.3, Micro Vent 4.25	UKPA451	UKPA452	UKPA453	UKPA454	UKPA455	UKPA456	UKPA45AN1	UKPA45AN3
Screw Vent 4.7	UKPA451	UKPA452	UKPA453	UKPA454	UKPA455	UKPA456	UKPA45AN1	UKPA45AN3
Swede Vent 4.0 Hex	UKNB401	UKNB402	UKNB403	UKNB404	UKNB405	UKNB406	UKNB4015	UKNB4030
Swede Vent TL Hex	UKNB401	UKNB402	UKNB403	UKNB404	UKNB405	UKNB406	UKNB4015	UKNB4030
Taperlock Hex	UKNB401	UKNB402	UKNB403	UKNB404	UKNB405	UKNB406	UKNB4015	UKNB4030
Threadlock 4.0 Hex	UKNB401	UKNB402	UKNB403	UKNB404	UKNB405	UKNB406	UKNB4015	UKNB4030
Swissplus 3.8 Platform	UKSW381	UKSW382	UKSW383	UKSW384	UKSW385	UKSW386		
Swissplus 4.8 Platform	UKST401	UKST402	UKST403	UKST404	UKST405	UKST406		

ANY IMPLANT SYSTEMS NOT ON THE LIST ARE NOT CURRENTLY LISTED BY KERATOR.

## Price Comparison

# LOCATOR

# KERATOR

Abutment	£129.02	£86*
Processing Pack*	£34.67 (sold in packs of 2 at £69.34)	free (comes with abutment)
<b>Total Price</b>	<b>£163.69</b>	<b>£86*</b>

\*£86 for straight, £93 for angled.



**Tokuyama**

# ESTECEM II PLUS

**Free Sample!**  
Call now to get yours!

## CEMENTS ANYTHING!

**Estecem II Plus** is a dual-cure radiopaque, adhesive resin cement system with excellent handling, aesthetic and adhesive properties to teeth and all prosthetic materials.

### Cementation of:

- » Crowns, bridges, inlays and onlays made of glass oxide ceramics (porcelain, zirconia and alumina), metal alloys (precious and non-precious) and resin materials including inorganic filler composite materials.
- » Veneers.
- » Adhesion bridges.
- » Metal or resin cores, metal or glassfibre posts.
- » Repair of fractured porcelain fused to metal crowns and all-ceramic restorations.

Complete with Universal Bond... the only true Universal Bond!



<b>Estecem Kit</b> Contents: Paste Universal 4.7g, Mixing Dish, 10 x Mixing Tips, 25 x Microbrushes, Universal Bond A+B, Universal Primer A+B		TK0330	<b>£204.70</b>
<b>Paste</b> Univ, Clear, White, Brown	2 x 4.7g	-	<b>£131.60</b>
<b>Cement Mixing Tips</b>	x40	TK0273	<b>£60.00</b>



# SOFRELINER TOUGH



**MULTI-AWARD WINNER!**

**Sofreliner Tough  
M Med Kit**

TK0101

**£147.40**

- **40% less waste** than competitors.
- **Gun dispensed application.**
- **Resists** future complications such as staining, plaque, odour, delamination, deformation, tearing and pulling.
- Up to **2 years** long lasting comfort.
- **Excellent relief** after surgery, extraction & implant procedures.
- **Zero odour, taste** or **chemical irritations.**

<b>Sofreliner Tough Kit</b> Contents: 52g cartridge, 10ml primer, mixing tips, coarse point, finishing wheel, accessories	<i>Medium</i>	-	TK0101	<b>£147.40</b>
	<i>Soft</i>	-	TK0190	
<b>Paste</b>	<i>Soft</i>	2 x 26g	TK0191	<b>£94.95</b>
	<i>Medium</i>	2 x 26g	TK0103	
<b>S Finishing System</b>		-	TK0192	<b>£39.60</b>
<b>Primer</b>		10ml	TK0106	<b>£57.00</b>

# REBASE II

Chairside  
hard reliner!



Rebase II Reline  
Kit Hard Fast  
Light Pink

TK0095

**£95.55**

**TOKUYAMA® REBASE II** is a **chairside hard denture reline material**, offering **better polishability**, **lower heat generation** for intraoral curing, **higher mechanical strengths**, **improved handling** and **less odour and taste**. It cures in 4min 30sec intraorally. Indicated for **hard denture relining** and **partial denture repairs**.

Rebase II Kit	-	TK0095	<b>£95.55</b>
Resin Hardener	48g	TK0093	<b>£16.00</b>
Powder	80g	TK0096	<b>£57.00</b>
Liquid	50ml	TK0097	<b>£57.00</b>
Adhesive	15ml	TK0098	<b>£25.70</b>

To order your  
**Kerator** call ...  
**01274 88 55 44**

or  
visit our website

Website



Overdenture Attachment Systems

**Trycare**

01274 88 55 44  
[www.trycare.co.uk](http://www.trycare.co.uk)