

COLTENE

January - March 2025

Promotions



NEWSLETTER



SIGN UP!



SPECIAL OFFER
BRILLIANT Lumina
P. 4



SPECIAL OFFER
HyFlex EDM OGSF
P. 12



SPECIAL OFFER
DIATECH Diamond Burs
P. 28

Universal submicron hybrid composite

BRILLIANT EverGlow

Enduring gloss – made brilliant



96%
global mark
obtained
by publishers
Dental

With the universal composite BRILLIANT EverGlow highly aesthetic and long-lasting restorations can be achieved effortlessly.

- Exceptional polishability and long-lasting brilliance
- Aesthetic single-shade restorations
- Versatile shade system with three translucency levels
- Good wettability with minimal stickiness to the instrument
- Excellent sculptability and smooth consistency



BRILLIANT EverGlow Flow

The ideal complement

- Duo Shade system
- Ideal for cavity linings and small fillings
- Enduring gloss
- Good adaptation properties due to its low viscosity
- High stability and perfect thixotropic
- Absolute level of precision



HIGHLY AESTHETIC RESULTS



Initial situation:
discoloration



Opaque shade
applied



Final
restoration



EverGlow Refills

1 x Syringe, 3g
OR 20 x Tip, 0,2

	Bleach Syringe > 60019697 Tips > 60019706		Translucent Syringe > 60019704 Tips > 60019718
	A1/B1 Syringe > 60019698 Tips > 60019707		Bleach Translucent Syringe > 60019705 Tips > 60019719
	A2/B2 Syringe > 60019699 Tips > 60019708		Opaque Bleach Syringe > 60019743 Tips > 60019746
	A3/D3 Syringe > 60019700 Tips > 60019709		Opaque A1 Syringe > 60019744 Tips > 60019747
	A3.5/B3 Syringe > 60019701 Tips > 60019710		Opaque A2 Syringe > 60023819 Tips > 60023823
	C2/C3 Syringe > 60019702 Tips > 60019716		Opaque A3 Syringe > 60019745 Tips > 60019748
	A4/C4 Syringe > 60019703 Tips > 60019717		Opaque A4 Syringe > 60023820 Tips > 60023824

EverGlow EcoPacks

A1/B1, Tips EcoPack,	60 x 0.2 g 60024160
A2/B2, Tips EcoPack,	60 x 0.2 g 60024161
A3/D3, Tips EcoPack,	60 x 0.2 g 60024162
A3.5/B3, Tips EcoPack,	60 x 0.2 g 60024163
A1/B1, Syringes EcoPack,	5 x 3 g 60024166
A2/B2, Syringes EcoPack,	5 x 3 g 60024167
A3/D3, Syringes EcoPack,	5 x 3 g 60024168
A3.5/B3, Syringes EcoPack,	5 x 3 g 60024169



LEARN MORE



EverGlow Flow

1 x 2g Syringe,
5 x Standard application needles
5 x Fine application needles 0.4 mm

	Bleach BL Syringe > 60019752
	A1/B1 Syringe > 60019753
	A2/B2 Syringe > 60019754
	A3/D3 Syringe > 60019755
	A3.5/B3 Syringe > 60019756
	A4/C4 Syringe > 60019757
	Translucent Trans Syringe > 60019758
	Opaque A2/(OA2) Syringe > 60019751
	Opaque A3/(OA3) Syringe > 60023825

Professional Tooth Brightening System

BRILLIANT Lumina

NEW

Natural bright smile

H₂O₂
was yesterday!

PAP
is the future of
tooth brightening.

BRILLIANT Lumina offers you an innovative in-office solution for tooth brightening – the first formula without hydrogen peroxide and carbamide peroxide.

This is because BRILLIANT Lumina is based on the active ingredient PAP (phthalimidoperoxy caproic acid). What makes it so special: the unique formula enables the PAP concentration to be kept sufficiently high to achieve a naturally brighter smile during treatment.

No
hydrogen
peroxide



OFFER
3+1*
ON BASIC KITS

BRILLIANT Lumina Basic Kit
REF 65002864
4x Gel, 1x Activator, 1x Patient brochure

LEARN MORE



BRILLIANT Lumina – an asset for your practice

Satisfied patients – no tooth sensitivity during or after treatment.

Gentle on the tooth structure – analyses of tooth surfaces show that BRILLIANT Lumina does not have an erosive effect on the tooth structure.

Simple treatment protocol

– the uncomplicated application of BRILLIANT Lumina can also be performed by dental practice staff.

Convincing results

Well-documented patient cases and consistent results confirm the reliability of BRILLIANT Lumina. And patient satisfaction is also impressive.

Before and after images of tooth brightening with BRILLIANT Lumina



The clinical outcomes depend on the individual circumstances of the patient.



"I've never had tooth bleaching before because I was worried about unnaturally white teeth and pain sensitivity. However, the gentle method of BRILLIANT Lumina quickly convinced me. The natural brightening of my teeth is exactly what I was looking for – and all without pain during or after treatment."

Andreas, 27 years

Reinforced CAD/CAM composite for permanent restoration

BRILLIANT Crios Block

BRILLIANT Crios is a high performance composite block for permanent restorations. The material combines all the advantages of an innovative submicron hybrid composite material with those of a CAD/CAM fabrication process for the reliable, aesthetic and fast manufacturing of restorations without a separate firing process.

- High flexural strength for resistant restorations
- Tooth-like elasticity for a shock-absorbing effect and pleasant bite experience
- Blends in extremely well to give natural aesthetics
- High resistance and low abrasion on opposite tooth
- Easy polishing for fast shine



CEREC/inLab – 5 blocks
5 x Blocks (size 12 or 14)

	Low Translucent		High Translucent	
	5 x 12	5 x 14	5 x 12	5 x 14
BLEACH	60019998 BL LT 12	60019985 BL LT 14	-	-
A1	60019999 A1 LT 12	60019986 A1 LT 14	60020007 A1 HT 12	60019994 A1 HT 14
A2	60020000 A2 LT 12	60019987 A2 LT 14	60020008 A2 HT 12	60019995 A2 HT 14
A3	60020001 A3 LT 12	60019988 A3 LT 14	60020009 A3 HT 12	60019996 A3 HT 14
A3.5	60020002 A3.5 LT 12	60019989 A3.5 LT 14	-	-
B1	60020003 B1 LT 12	60019990 B1 LT 14	60020010 B1 HT 12	60019997 B1 HT 14
B2	60020004 B2 LT 12	60019991 B2 LT 14	-	-
B3	60020005 B3 LT 12	60019992 B3 LT 14	-	-

Free Sample available
Ask your Territory Manager

BRILLIANT Crios Disc

- Made from our award winning BRILLIANT EverGlow composite
- High surface lustre for smoother restorations
- Duo shades for economy in high or low translucencies

	Low Translucent		High Translucent	
	14mm	18mm	14mm	18mm
A1	60022899 A1 LT H14	60022886 A1 LT H18	6002907 A1 HT H14	60022894 A1 HT H18
A2	60022900 A2 LT H14	60022887 A2 LT H18	60022908 A2 HT H14	60022895 A2 HT H18
A3	60022901 A3 LT H14	60022888 A3 LT H18	60022909 A3 HT H14	60022896 A3 HT H18
A3.5	60022902 A3.5 LT H14	60022889 A3.5 LT H18	-	-



The disc is available in the two different heights 14 mm/18 mm and following shades and translucencies:

LEARN MORE



Light-Curing Single-Component Universal Bond

ONE COAT 7 UNIVERSAL

The light-curing ONE COAT 7 UNIVERSAL is the only bond you need for direct and indirect filling therapy in your practice.

- Self Etch, Selective Etch and Total Etch, a bond for all adhesive techniques
- With activator for chemically curing products
- Exceptional bonding values on enamel and dentine
- Excellent marginal seal and outstanding marginal leakage tightness
- Ergonomically shaped, triangular bottle with dropper for fine dosing

Contains MDP

- One bond for all indications



300
Applications
per bottle



**ONE COAT 7
UNIVERSAL Refill**
REF 60019539



UNIVERSAL ACTIVATOR 3 ml
for self and dual cure materials
REF 7054
1 × 3 ml Activator,
1 × 50 pcs. Microblush, black

ONE COAT 7 UNIVERSAL Intro Kit

REF 60019538

- 1 × 5 ml ONE COAT 7 UNIVERSAL
- 1 × 2.5 ml Etchant Gel S
- 1 × 20 pcs. Application needles
- 1 × 50 pcs. Brushes black
- 1 × Mixing well with cover



LEARN MORE



Flowable dual curing posterior restorative material

Fill-Up!

A SERIOUS ALTERNATIVE TO AMALGAM

- Optimal depth polymerisation with minimal shrinkage due to dual curing system.
- Guaranteed single-layer technique - even in very deep cavities.
- Optimised sealing of margins - reduced post-operative sensitivity
- Universal shade in a convenient Automix syringe for efficient placement.



“ Given the move towards less amalgam use there is going to be greater need for suitable alternative materials and composite resin will lead the way. There are likely to be increased use of novel techniques including bulk-fill restorative materials. Fill-Up is one such material that allows rapid cavity filling, easy finishing and a reasonable wear resistance with simple top-up and repair options for long-term maintenance **”**

Professor Brian Millar



Fill-Up! Kit

REF 60019973

Contents: 2 x 4.5 g Fill-Up! Universal,
1 x 5 ml ONE COAT 7 UNIVERSAL,
1 x 3 ml ONE COAT 7-UNIVERSAL Activator
6 x Mixing tips Short Super Fine,
8 x Mixing tips Short Fine



OFFER

Buy any kit
**GET A FREE
COMPOSITE
INSTRUMENT
SET**



UK SPECIAL PROMOTION
Copy invoice required.
Send to info.uk@coltene.com

Fill-Up! Refill Syringe

REF 60019341

1 x 4.5 g Fill-Up! Universal,
6 x Mixing tips



Fill-Up! Economy Kit

REF 60019355

5 x 4.5 g Fill-Up! Universal,
20 x Mixing Tip short fine
15 x Mixing Tip short super fine

LEARN MORE



Mastering Anterior and Posterior Composites - hands on course

With Dr Asmaa Al-Taie

Saturday 14th June 2025

Clayton Hotel, Leeds

7 City Walk, Sweet Street, Leeds LS11 9AT
(10 minutes' walk from train station)

Tel: 01132 342 340

Email: Cb.leeds@claytonhotels.com

A hands on clinical course, which explores the aesthetic clinical management of the anterior dentition with direct resin composites.

Learn how to assess patients to optimise treatment success and enhance the functional and aesthetic outcome using modern, restorative techniques. Benefit from hands on practical work, building up anterior teeth and optimising aesthetics by layering.

The course also includes demonstrations of how to use flowable bulk fill composites and a simplified method of cusp build ups, improving your technique and confidence in practice.

Objectives:

1. Discuss clinical assessment of the anterior teeth and planning management strategies.
2. Review the development of resin composites and modern bonding protocols and polishing systems.
3. To demonstrate how to produce successful composite build ups to optimise the shape and aesthetics of anterior teeth.
4. Discuss finishing and polishing techniques of composite restorations.
5. To demonstrate how to produce posterior composites using flowable Bulkfil composites and using simplified method of cusps build ups to produce the correct anatomy.

Learning Outcomes:

1. Be able to plan and undertake composite bonding to optimise the size and shape of anterior teeth and optimise aesthetic outcomes.
2. Be able to produce successful composite anterior composite build ups to optimise the shape and aesthetics of anterior teeth.
3. Be able to produce posterior composites restorations using Bulkfil composites.

GDC outcomes: C

Cost: £295 including vat
(Maximum 12 delegates)

Book online:



CanalPro X-Move

Includes integrated Apex Locator

Already programmed for the new OGSF sequence file

- Continuous rotation and a reciprocation motion for all common file systems
- Wireless endomotor for easy and flexible operation
- Integrated apex locator for safe and efficient treatments
- Insulated contra angle with super mini-head and slim neck provides convenient usage and free field of view
- Intuitive control display for easy handling
- Pre-programmed settings for COLTENE file systems saves preparation time

OFFER

BUY AN X-MOVE MOTOR AND GET

8 PACKS OF EDM OGSF FILES FREE!*

Promo code: BUNDLEXM

FILE PACKS INCLUDE:
 4 × OGSF Sequence Sets 25mm and 1 × of each Orifice Opener 18mm, Glidepath File 25mm, Shaping File 25mm, Finishing File 25mm

See pages 12-13 for more EDM OGSF information.



CanalPro X-Move contra angle super mini-head & slim neck



Normal contra angle head & neck

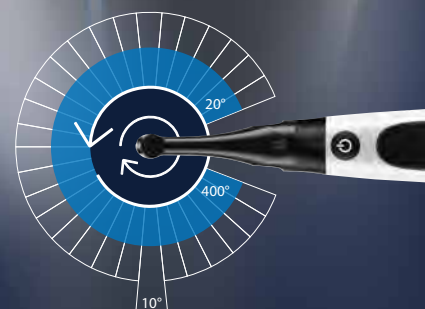
CanalPro X-Move Motor

REF 65002739

Contents:
 1 × Motor Handpiece, 1 × Charging Base, 1 × Contra Angle Head (REF 65002744)
 1 × Spray Nozzle, 1 × Measuring Wire, 4 × File Holder, 2 × Lip Clip,
 2 × Touch Probe, 2 × "O" ring, 1 × Power Adapter, 1 × Battery

Ask your Territory Manager for a demonstration

LEARN MORE



DISCOVER THE ENDO ASSISTANT JENI!

CanalPro Jeni

Digital assistance system for canal preparation



CanalPro Jeni, complete set

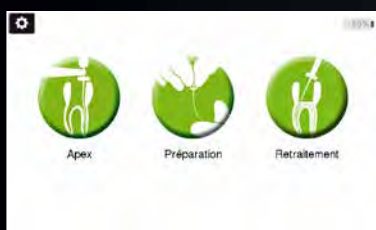
REF 60023659

includes:

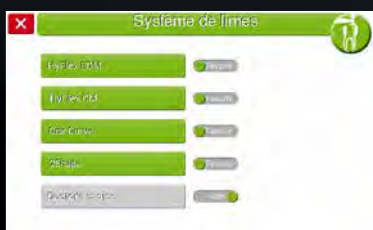
- 1 x Control unit,
- 1 x Motor with apex measuring contact,
- 1 x Fully insulated angled handpiece 1:1,
- 1 x Bluetooth foot switch,
- 1 x Power supply,
- 1 x Apex cable set,
- 1 x Holding bracket for apex cable



New, autonomous assistance system for canal preparation



Perfectly matched to four file systems



Apex locator – measuring length without interruption



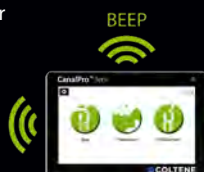
Reach your objective efficiently with the Jeni mode



Irrigation with aplomb



File-Performance Indicator



Flexible use via Doctor's Choice function



Future-proof with updates

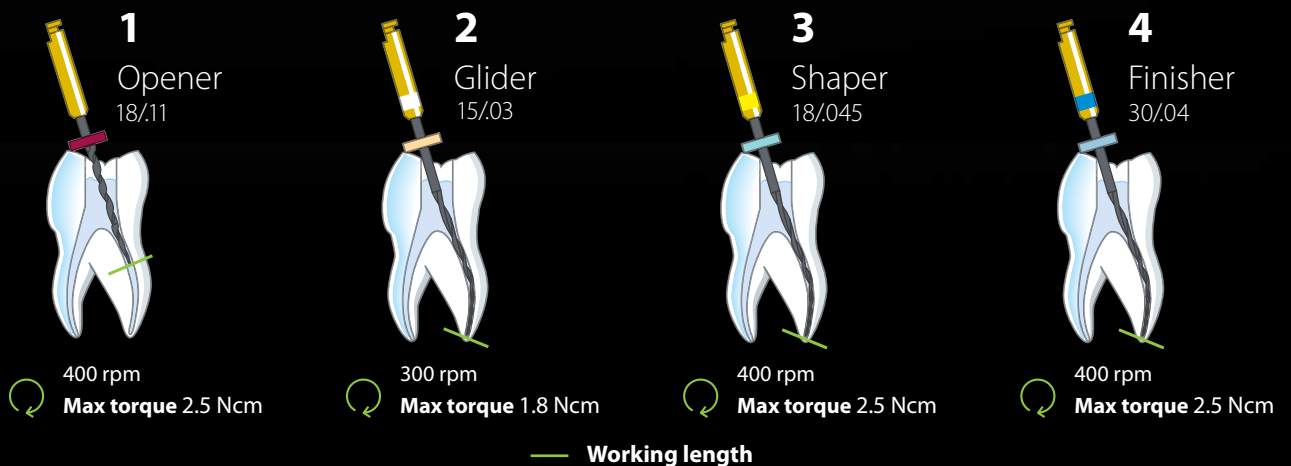
LEARN MORE





NEW

HyFlex EDM – OGSF Sequence





Would you like fast, safe and predictable? Discover the new sequence solution!

The new HyFlex EDM OGSF sequence includes a new Orifice Opener and Glidepath file for opening the glide path, as well as a Shaping file for shaping the root canal over the full length. The defined treatment procedure makes the preparation easy and keeps the learning curve short. Due to the optimized match of tip sizes and tapers, designed in cooperation with Prof. Pedullà, the files provide a smooth feeling when shifting from one file to another and help you to keep control over the treatment.

Features and Benefits

- Efficient treatment with high cutting performance
- High fracture resistance and flexibility
- Centered preparation of the canal
- Only one shaping file
- Sterile blister
- 2 lengths: 21 and 25 mm

Shaping

HyFlex EDM OGSF Set, 4 pcs	21 mm	25 mm
OGSF Sequence	60036141	60036142
HyFlex EDM OGSF Refills, 3 pcs	18 mm	21 mm
Orifice Opener 18/.11	60036140	-
Glidepath File 15/.03	-	60023493
Shaping File 18/.045	-	60036136
Finishing File 30/.04	-	60036138
HyFlex EDM Finishing File, 3 pcs	21 mm	25 mm
Finishing File 40/.04	60022271	60019597
Finishing File 50/.03	60022272	60019598
Finishing File 60/.02	60022274	60019599

Drying and Obturation

Size / Taper	HyFlex EDM Paper Points, 100 pcs	HyFlex EDM Guttapercha Points, 60 pcs
30/.04	60036503	60036504
40/.04	60022676	60022708
50/.03	60022741	60022709
60/.02	60022740	60022710



LEARN MORE



HyFlex EDM

Stays on track

Manufactured from Nickel-Titanium alloy with Controlled Memory (CM) heat treatment, HyFlex EDM files allow multiple regeneration and reuse. Due to their innovative manufacturing process using electric discharge machining HyFlex EDM files have a unique surface and stand out by their durability and high fracture resistance.

- Treats 80% of all cases with the one file
- Designed for successful centered canal preparation
- Multiple regeneration and reuse
- Specially hardened for safer application
- High flexibility
- Extreme resistance to fracture



OFFER

3+1*
ON REFILLS

HyFlex EDM Refill
3 × File of your choice

Orifice Opener
25/.12



Glidepath File

15/.03



10/.05



Length	Refill × 3 400 rpm - 2.5 N.cm	Refill × 3 300 rpm - 1.8 N.cm	Refill × 3 300 rpm - 1.8 N.cm
21mm	-	60023493	60022269
25mm	-	60023492	60019594
15mm	60019596	-	-

LEARN MORE



HyFlex EDM Shaping Set Simple

- 1 × 25/12 Orifice Opener
- 1 × 10/05 Glidepath File
- 1 × 25/~ Shaping File

Length

21mm	60022267
25mm	60019363



HyFlex EDM Shaping Set Medium

- 1 × 10/05 Glidepath File
- 1 × 20/05 Preparation File
- 1 × 25/~ Shaping File

Length

21mm	60022277
25mm	60022278



HyFlex EDM Refills for finishing (optional)

3 × File of your choice

	21mm	25mm
40/04	60022271	60019597
50/03	60022272	60019598
60/02	60022274	60019599



Preparation File

20/05



Shaping File

25/~ OneFile



Refill × 3

400 rpm - 2.5 N.cm

60022275

60022276

Refill × 3

400 rpm - 2.5 N.cm

60022270

60019595

CanalPro

Irrigation and rinsing



OFFER

25%
OFF RRP*
500ml RINSING
SOLUTIONS

For irrigation/debridement of root canals during and after instrumentation. Available in 3% and 6% formula.

CanalPro NaOCl 3 %
1 × 500ml
REF 60019655V

CanalPro NaOCl 6 %
1 × 500ml
REF 60019656V

Removes smear layer and dentin mud. Opens dentin tubules. Better adhesion of sealers and obturation materials.

CanalPro EDTA 17 %
1 × 500ml
REF 60019651

CanalPro EDTA 17 %
1 × 100ml
REF 60019654

Chlorhexidine digluconate solution. Recommended for additional rinsing and during revisions. Very effective against *E. faecalis* and fungi.

CanalPro CHX 2 %
1 × 500ml
REF 60019658

CanalPro CHX 2 %
1 × 100ml
REF 60019659

CanalPro SyringeFill Cap

REF 60019662

1 × SyringeFill Cap



CanalPro Color Syringes

50 × Color Syringes 5ml

50 × Color Syringes 10 ml

	5ml	10ml
●	REF 60019321	REF 60011173
●	REF 60019322	REF 60011174
●	REF 60019323	REF 60011175
○	REF 60019324	REF 60011176



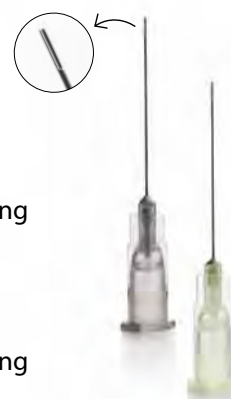
CanalPro Slotted-end Tip

REF 60011167

100 × Slotted-end tips with sideway opening
Calibre 27 - 0.4mm

REF 60011168

100 × Slotted-end tips with sideway opening
Calibre 30 - 0.3mm



CanalPro Side-Port Tips

REF 60011169

100 × Side-Port tips
Calibre 27 - 0.4mm

REF 60011170

100 × Side-Port tips
Calibre 30 - 0.3mm



Expansion meets adhesion

roeko GuttaFlow 2

GuttaFlow 2 is a filling system for obturation of root canals containing two products in one: Guttapercha in the form of powder with a particle size smaller than 30 µm and a sealer. This filling system works with cold, flowable Guttapercha.

- Excellent flow properties
- Almost no solubility
- Dense occlusion of the root canal
- Very good tissue compatibility
- Reinfection protection
- Optimal radiopacity
- Precise root post preparation possible



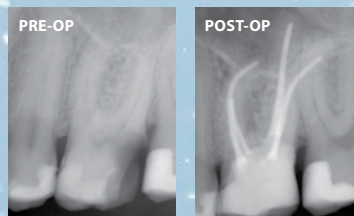
Excludes mixing tips packs

Bioactive obturation material

roeko GuttaFlow bioseal

Dual safety stage

- Gutta Percha and sealer in a single application
- Nearly insoluble
- The healing process is supported by increasing the pH value



Images - Dr. Thomas Rieger



GuttaFlow 2 Standard set 5ml syringe

1 × Dual-barrel syringe,
12 × Mixing tips,
1 × Mixing pads
REF 60026870

GuttaFlow 2 Refill pack 5ml syringe

REF 60026871

GuttaFlow 2 Refill pack 24 mixing tips

REF 60013719

LEARN MORE



GuttaFlow bioseal Standard Set 5ml syringe

1 × Dual-barrel syringe,
12 × Mixing tips,
1 × Mixing pads
REF 60019560

GuttaFlow bioseal Refill pack 5ml syringe

REF 60019561

GuttaFlow bioseal Refill pack 24 mixing tips

REF 60019562

Paper and Guttapercha Points

HyFlex EDM Paper Points and Guttapercha Points

HyFlex paper and guttapercha points are optimally matched to the HyFlex EDM files and thus contribute to the best possible treatment result. They correspond to the respective sizes and have the perfect taper to dry and obturate root canals previously prepared with HyFlex files precisely and as quickly as possible.

- Precise fit
- Colour-coded
- Highest quality
- assorted or individual sizes
- ≥ 28 mm



HyFlex EDM & OGSF Paper and Guttapercha points selection

Size / taper	Paper points 100 pcs	Guttapercha points 60 pcs
20 / .05	REF 60022742	REF 60022706
OneFile 25/~	REF 60022743	REF 60022707
40 / .04	REF 60022676	REF 60022708
50 / .03	REF 60022741	REF 60022709
60 / .02	REF 60022740	REF 60022710
Assortment 20/.05 - 60/.02	REF 60022744	REF 60022705
OGSF 30/.04	REF 60036503	REF 60036504



Roeko Paper Points and Guttapercha Points, Top color



- Sterile
- Glue-free
- Highly absorbent
- White tip, end coloured
- Monitors cleaning and drying of the root canal

Roeko Top Color Paper points

Size	200 pcs
Assorted 15–40	REF 344596
15	REF 344515
20	REF 344520
25	REF 344525
30	REF 344530
35	REF 344535
40	REF 344540
Size	120 pcs
Assorted 45–80	REF 344597
45	REF 344545
50	REF 344550
55	REF 344555
60	REF 344560
70	REF 344570
80	REF 344580
Assorted 90–140	REF 344598
90	REF 344590
100	REF 344591
110	REF 344592
120	REF 344593
130	REF 344594
140	REF 344595



- Latex-free guttapercha points
- Pink tip, end colour coded
- Produced fully automatically
- Precisely produced by machine rolling for a uniform taper

Roeko Top Color Guttapercha points

Size	100 pcs
Assorted 15–40	REF 365196
15	REF 365115
20	REF 365120
25	REF 365125
30	REF 365130
35	REF 365135
40	REF 365140
Assorted 45–80	REF 365197
45	REF 365145
50	REF 365150
55	REF 365155
60	REF 365160
70	REF 365170
80	REF 365180
Assorted 90–140	REF 365198
90	REF 365190
100	REF 365191
110	REF 365192
120	REF 365193
130	REF 365194
140	REF 365195

A-silicone impression material

AFFINIS



Still one of the fastest A-silicones



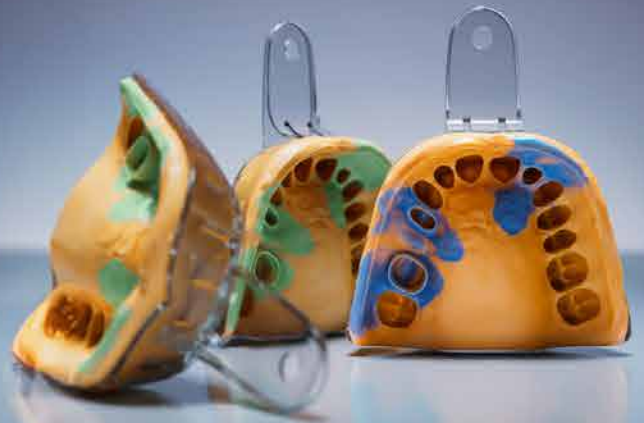
Precise moulding of every detail even under the most difficult conditions



Confidence during impression taking



Easy monitoring for success



OFFER

2+1

ON REFILLS

TERRITORY MANAGER OFFER
FEBRUARY ONLY



AFFINIS putty

2 x 300ml Base and Catalyst
2 x Dosage spoon

Viscosity

putty soft		6530
putty soft fast		6531
putty super soft		6535



AFFINIS system 360

2 x 380ml Cartridge
1 x Fixation Ring

Viscosity

putty		6472
heavy body		6487
MonoBody		6482

FOR THE FULL RANGE
PLEASE ASK YOUR TERRITORY MANAGER



AFFINIS and AFFINIS PRECIOUS

2 x 50ml Cartridge
12 x Universal Mixing Tip

Viscosity

light		6501
light fast		6601
regular		6511
regular fast		6611
PRECIOUS light		6775
PRECIOUS regular		6776

LEARN MORE



Speedex

The C-silicone with A-silicone quality

- One for all: the Speedex Universal Activator for all wash and tray materials
- Speedex putty soft material impresses with outstanding final hardness
- You can customise the working time by increasing or reducing the amount of activator paste

OFFER

3+1*

ON REFILLS



REF 4970	Putty
REF 60023572	Putty Soft
REF 4980	Light Body
REF 4986	Medium
REF 4990	Universal Activator

LEARN MORE

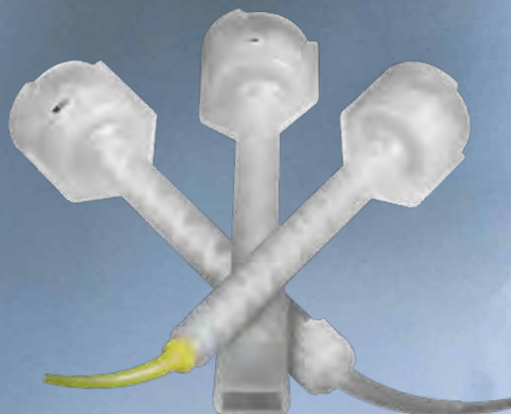


Universal Mixing Tip

One for all, all for one!

Universal Mixing Tip – Always the right choice

- For all 50 ml and 25 ml microSystem cartridges from COLTENE
- All common oral and spreader tips of 50 ml and 25 ml cartridges can be used
- Simple and precise application due to reduced extrusion forces
- Practical, flexible and economical
- For all COLTENE light and regular body, bite registration and gingival mask materials



With up to 55 % less extrusion force during the application of wash material the new Universal Mixing Tip ensures an easier work with dispensers.

See over for range of tips and use

Range of Tips



Oral Tips Yellow



Oral Tips White



60019663

60019694

6555

6210

× 40

× 100

× 100

× 100

PRESIDENT The Original 50ml

Light body, Regular body, Xtra light body



AFFINIS and AFFINIS PRECIOUS 50ml

Light body, Light body fast, Regular body, Regular body fast



PRESIDENT The Original

System 360, Heavy body, MonoBody

AFFINIS SYSTEM 360

MonoBody, Heavy Body, Putty

JET BLUE BITE 50ml

Fast, Superfast



ParaCore 25ml

Automix dentin, Automix white



ParaCore 5ml

Automix intro kit, Automix dentin, Automix white, Refill

Fill-Up! 4.5g

Intro kit, Refill

TempoSIL 2 - 5ml

Dentin intro kit, Dentin refill, White intro kit, White Refill

GuttaFlow bioseal 5ml

Kit, Refill

BRILLIANT EverGlow Flow

Kit, Refill



6223	6162	6163	6747	6759	6749	60019562	60022137
× 100	× 40	× 1	× 40	× 40	× 40	× 24	× 20

	✓	✓					
	✓	✓					
✓							
			✓	✓	✓		
			✓	✓	✓		
			✓	✓	✓		
						✓	
							✓

roeko Headrest Covers

The use of ROEKO headrest covers is a simple, quick and hygienic way of preparing the patient chair for the next patient. Polyethylene foil with absorbent cellulose coating.



- REF 670007 White, 100 pcs. 27 × 28cm
- REF 670008 White, 100 pcs. 27 × 31cm
- REF 670009 White, 100 pcs. 27 × 34cm

roeko Luna



ROEKO Luna
Cotton rolls

- REF 100001 300g, #1
- REF 100002 300g, #2
- REF 100003 300g, #3
- REF 100004 300g, #4



roeko Endo-Frost

- Produces a rapid response
- Needs no refrigeration
- Spray nozzle for precise application
- Neat - no dripping



ROEKO Endo-Frost
REF 240000
Cold Spray, 200ml

SciCan

HYDRIM C61 WD G4



Automated Instrument Washer-Disinfectors are the first step in the reprocessing process

The HYDRIM C61 WD from Eschmann and COLTENE ensures instruments are properly and consistently cleaned and disinfected before moving onto sterilisation in an autoclave.

Features include:

- Accommodates 120 instruments per cycle
- Heavy duty cleaning, disinfection & drying in 60 minutes
- Validated cycles and compliant to HTM01-05/SDCEP

- WRAS approved
- Benchtop or underbench mounting meaning it can fit into practices where space is at a premium

Service & Support

In addition, Eschmann offer a fully comprehensive service package to support your HYDRIM C61 WD. This includes ECPD training, annual service & software upgrades, unlimited parts, labour & breakdown cover from our nationwide team of over 50 engineers.

WATCH THE VIDEO



Available from:
 Eschmann Technologies Ltd.
 Tel. 01903 753322
 Email - info@eschmann.co.uk
 www.eschmann.co.uk

Ultrasonic cleaning supports safe instrument reprocessing!

BioSonic UC150

- 5.7l stainless steel tank
- Low noise during operation
- Data log function and download of usage data via USB
- Individually adjustable functions
- Offers space for several cassettes at the same time
- Use as tabletop or built-in unit
- Heating function from 25 up to 60 °C (Function can be activated separately via code)
- Glove-friendly touch screen



LEARN MORE



BioSonic UC150 Cleaner Unit UK Plug type G

REF 60021989

- 1 x Unit with display
- 1 x Recess Template
- 1 x Basket
- 1 x Recess Gasket
- 1 x Power Cord [UK]
- 1 x Drain Tube

Accessories

- REF UC53 1 x 600 ml Beaker with Cover & Positioning Ring
- REF 60022040 1 x Cassette Basket 26.8 x 15.8 x 11.5 cm
- REF 60022041 1 x Beaker Holder

Ultrasonic Solutions

- REF 60021960 1 x BioSonic UC40 dosed bottle, 1 l
- REF 60021961 1 x BioSonic UC40 refill can, 5 l

BioSonic UC50DB

BioSonic UC50DB Cleaner Unit UK Plug

REF UC50DB230UK

- With Digital Timer
- Tank capacity 3.2 l
- 1 x Tank cover
- 1 x Fingerguard instrument basket
- 1 x Owners guide



LEARN MORE



DIATECH Diamond Bur Range



Head shape	Head shape no. ISO Ø 1/10 mm	Head L in mm	Price Gr. C	Price Gr. M	Price Gr. F	Price Gr. EF
Head shape	368	16				
ISO Ø 1/10 mm	16	16				
Head L in mm	3.5	3.5				
Price Gr. C	D1/00SD 60031758					
Price Gr. M	D1/00SD 60031756					
Price Gr. F	D1/00SD 60031754					
Price Gr. EF	D6/00SD 60031760					
	D6/00SD 60031768					
	D1/00SD 60031766					
	D1/00SD 60031762					
	D6/00SD 60031770					
	D1/00SD 60031778					
	D1/00SD 60031776					
	D1/00SD 60031772					
	D1/00SD 60031786					
	D1/00SD 60031784					
	D1/00SD 60031782					
	D1/00SD 60031794					
	D1/00SD 60031792					
	D6/00SD 60031788					
	D6/00SD 60031796					
	D1/00SD 60031810					
	D1/00SD 60031805					
	D1/00SD 60031800					
	D1/00SD 60031818					
	D1/00SD 60031816					
	D6/00SD 60031826					
	D6/00SD 60031824					
	D6/00SD 60031820					
	D1/00SD 60031830					
	D1/00SD 60031828					
	D6/00SD 60031836					
	D6/00SD 60031834					
	D6/00SD 60031832					
	D6/00SD 60031840					
	D6/00SD 60031838					
	D1/00SD 60031850					
	D1/00SD 60031852					
Head shape	813	18				
ISO Ø 1/10 mm	18	18				
Head L in mm	2	2				
Price Gr. C	D6/00SD 60031952					
Price Gr. M						
Price Gr. F						
Price Gr. EF						
	D5/00SD 60031954					
	D5/00SD 60031956					
	D5/00SD 60031958					
	D5/00SD 60031960					
	D6/00SD 60031966					
	D1/00SD 60031968					
	D1/00SD 60031970					
	D1/00SD 60031972					
	D1/00SD 60031974					
	D5/00SD 60031996					
	D5/00SD 60031998					
Head shape	847	14				
ISO Ø 1/10 mm	14	14				
Head L in mm	8	8				
Price Gr. C	D1/00SD 60032130					
Price Gr. M	D6/00SD 60032128					
Price Gr. F						
Price Gr. EF						
	D6/00SD 60032132					
	D1/00SD 60032136					
	D1/00SD 60032134					
	D6/00SD 60032138					
	D6/00SD 60032142					
	D6/00SD 60032140					
	D6/00SD 60032144					
	D6/00SD 60032146					
	D1/00SD 60032160					
	D1/00SD 60032164					
	D1/00SD 60032162					
	D6/00SD 60032166					
	D1/00SD 60032170					
	D1/00SD 60032168					
	D6/00SD 60032172					
	D1/00SD 60032174					
	D6/00SD 60032176					
	D6/00SD 60032180					
	D6/00SD 60032178					
	D1/00SD 60032190					
	D6/00SD 60032192					
	D6/00SD 60032194					
	D6/00SD 60032200					
	D1/00SD 60032204					
	D1/00SD 60032202					
Head shape	859	12				
ISO Ø 1/10 mm	12	12				
Head L in mm	10	10				
Price Gr. C	D1/00SD 60032408					
Price Gr. M	D1/00SD 60032406					
Price Gr. F						
Price Gr. EF						
	D1/00SD 60032416					
	D1/00SD 60032413					
	D1/00SD 60032410					
	D1/00SD 60032418					
	D1/00SD 60032424					
	D1/00SD 60032422					
	D6/00SD 60032420					
	D6/00SD 60032426					
	D6/00SD 60032432					
	D6/00SD 60032430					
	D6/00SD 60032428					
	D6/00SD 60032442					
	D6/00SD 60032440					
	D6/00SD 60032438					
	D1/00SD 60032450					
	D1/00SD 60032448					
	D1/00SD 60032446					
	D1/00SD 60032456					
	D1/00SD 60032454					
	D1/00SD 60032452					
	D1/00SD 60032460					
	D1/00SD 60032458					
	D1/00SD 60032466					
	D1/00SD 60032464					
	D1/00SD 60032462					
	D1/00SD 60032474					
	D1/00SD 60032472					
Head shape	905	27				
ISO Ø 1/10 mm	27	27				
Head L in mm	2.9	2.9				
Price Gr. C	D4/00SD 60032668					
Price Gr. M						
Price Gr. F						
Price Gr. EF						
	D4/00SD 60032670					
	D5/00SD 60032672					
	D5/00SD 60032674					
	D5/00SD 60032676					
	D5/00SD 60032678					
	D2/00SD 60031842					
	D2/00SD 60031844					
	D2/00SD 60031846					
	D2/00SD 60031848					
	D1/00SD 60031976					
	D1/00SD 60031982					
	D6/00SD 60031980					
	D6/00SD 60031978					
	D1/00SD 60031986					
	D6/00SD 60031984					
	D6/00SD 60031988					
	D1/00SD 60031990					
	D1/00SD 60031992					
Head shape	856P	18				
ISO Ø 1/10 mm	18	18				
Head L in mm	8	8				
Price Gr. C	D3/00SD 60032364					
Price Gr. M						
Price Gr. F						
Price Gr. EF						
	D3/00SD 60032366					
	D1/00SD 60032376					
	D1/00SD 60032378					
	D6/00SD 60032493					
	D6/00SD 60032496					
	D6/00SD 60032498					
	D6/00SD 60032500					
	D6/00SD 60032516					
	D6/00SD 60032514					
	D6/00SD 60032520					
	D6/00SD 60032518					
	D6/00SD 60032522					
	D6/00SD 60032526					
	D6/00SD 60032530					
	D6/00SD 60032528					
	D6/00SD 60032532					
	D6/00SD 60032536					
	D6/00SD 60032534					
Head shape	837T	14				
ISO Ø 1/10 mm	14	14				
Head L in mm	8	8				
Price Gr. C	D3/00SD 60032070					
Price Gr. M						
Price Gr. F						
Price Gr. EF						
	D3/00SD 60032072					
	D3/00SD 60032136					
	D3/00SD 60032158					
	D3/00SD 60032186					
	D3/00SD 60032188					
	D3/00SD 60032234					
	D3/00SD 60032236					
	D3/00SD 60032238					
	D3/00SD 60032240					
	D3/00SD 60032238					
	D3/00SD 60032240					
	D3/00SD 60032236					
	D3/00SD 60032238					
	D3/00SD 60032240					
	D3/00SD 60032368					



Inverted Cone with Collar	806 10 2.2		D6/005D 60031918
Inverted Cone with Collar	806 12 2.2		D6/005D 60031920
Inverted Cone with Collar	806 14 2.2		D6/005D 60031922
Inverted Cone with Collar	806 16 2.5		D6/005D 60031924
Inverted Cone	807 10 3.5		D6/005D 60031926
Inverted Cone	807 12 3.5		D6/005D 60031928
Inverted Cone	807 16 4		D6/005D 60031930
Inverted Cone	807 18 5		D6/005D 60031932
Occlusal Reduction/Barrel	811 31 4.2		D4/005D 60031934
Occlusal Reduction/Barrel	811 33 5		D4/005D 60031936
Occlusal Reduction/Barrel	811 37 7		D4/005D 60031940
Occlusal Reduction/Barrel	811 48 8		D4/005D 60031942
Occlusal Reduction/Barrel	811 48 8		D4/005D 60031944
Diabolo/Amalgam Remover	810 1.5		D6/005D 60031948
Diabolo/Amalgam Remover	813 14 1.5		D6/005D 60031950
Round End Cylinder	838 14 4		D1/005D 60032080
End Cutting Cylinder	839 10 0.2		D2/005D 60032084
End Cutting Cylinder	839 12 0.2		D2/005D 60032088
End Cutting Cylinder	839 14 0.2		D2/005D 60032086
End Cutting Cylinder	839 16 0.2		D2/005D 60032092
End Cutting Cylinder	839 18 0.2		D2/005D 60032090
Flat End Cylinder	842 14 12		D1/005D 60032094
Flat End Taper	845 10 4		D6/005D 60032096
Flat End Taper	845 12 4		D6/005D 60032098
Flat End Taper	845 14 4		D6/005D 60032100
Flat End Taper	845 16 4		D6/005D 60032104
Flat End Taper	845 21 4		D6/005D 60032102
Flat End Taper	846 16 6		D1/005D 60032112
Flat End Taper	846 12 7		D1/005D 60032114
Flat End Taper	846 18 7		D1/005D 60032116
Flat End Taper	846 23 7		D6/005D 60032118
Flat End Taper	847 12 8		D1/005D 60032126
Round End Taper	856 14 9		D1/005D 60032286
Round End Taper	856 16 9		D6/005D 60032288
Round End Taper	856 18 9		D1/005D 60032292
Round End Taper	856 21 9		D1/005D 60032290
Round End Taper	856 16 8		D6/005D 60032294
Round End Taper	856 18 8		D1/005D 60032298
Round End Taper	856 21 8		D1/005D 60032296
Round End Taper	856 23 8		D6/005D 60032300
Round End Taper	856 25 8		D1/005D 60032304
Round End Taper	856 28 8		D6/005D 60032302
Round End Taper	856 30 8		D6/005D 60032306
Round End Taper	856 32 8		D1/005D 60032310
Round End Taper	856 34 8		D1/005D 60032308
Round End Taper	856 36 8		D6/005D 60032318
Round End Taper	856 38 8		D1/005D 60032316
Round End Taper	856 40 8		D6/005D 60032314
Round End Taper	856 42 8		D6/005D 60032320
Round End Taper	856 44 8		D6/005D 60032322
Round End Taper	856 46 8		D6/005D 60032326
Round End Taper	856 48 8		D6/005D 60032324
Round End Taper	856 50 8		D6/005D 60032328
Round End Taper	856 52 8		D6/005D 60032326
Round End Taper	856 54 8		D6/005D 60032330
Round End Taper	856 56 8		D6/005D 60032334
Round End Taper	856 58 8		D6/005D 60032332
Needle	858 14 8		D1/005D 60032388
Needle	858 16 8		D1/005D 60032386
Needle	858 18 8		D1/005D 60032384
Needle	858 20 8		D1/005D 60032394
Needle	858 22 8		D1/005D 60032392
Needle	858 24 8		D1/005D 60032390
Needle	858 26 8		D1/005D 60032396
Needle	858 28 8		D1/005D 60032404
Needle	858 30 8		D1/005D 60032400
Needle	858 32 8		D1/005D 60032398
Round End Cylinder	881 12 8		D6/005D 60032698
Round End Cylinder	881 14 8		D1/005D 60032602
Round End Cylinder	881 16 8		D1/005D 60032600
Round End Cylinder	881 18 8		D6/005D 60032604
Round End Cylinder	881 20 8		D1/005D 60032608
Round End Cylinder	881 22 8		D1/005D 60032606
Round End Cylinder	881 24 8		D6/005D 60032610
Round End Cylinder	881 26 8		D1/005D 60032614
Round End Cylinder	881 28 8		D1/005D 60032612
Round End Cylinder	882 12 10		D1/005D 60032626
Round End Cylinder	882 14 10		D6/005D 60032628
Beveled Cylinder	884 12 6		D6/005D 60032632
Beveled Cylinder	885 12 8		D6/005D 60032638
Beveled Cylinder	885 14 8		D6/005D 60032636
Beveled Cylinder	885 16 8		D6/005D 60032640
Beveled Cylinder	885 18 8		D6/005D 60032642
Beveled Cylinder	886 12 10		D6/005D 60032646
Beveled Cylinder	886 14 10		D6/005D 60032644
Beveled Cylinder	886 16 10		D6/005D 60032650
Beveled Cylinder	886 18 10		D6/005D 60032648
Beveled Cylinder	886 20 10		D6/005D 60032652
Beveled Cylinder	886 22 10		D6/005D 60032654
Flame	889 9 3.5		D1/005D 60032660
Flame	889 11 3.5		D1/005D 60032658
Flame	889 13 3.5		D1/005D 60032656
Occlusal Reduction	899 27 7		D4/005D 60032664
Acorn	905 23 2.7		D4/005D 60032666
Rounded Edge Taper	846R 16 6		D1/005D 60032122
Rounded Edge Taper	847R 16 8		D6/005D 60032120
Rounded Edge Taper	847R 18 8		D6/005D 60032148
Rounded Edge Taper	847R 18 10		D1/005D 60032152
Rounded Edge Taper	847R 20 8		D1/005D 60032150
Rounded Edge Taper	847R 20 10		D6/005D 60032154
Rounded Edge Taper	848R 16 10		D6/005D 60032182
Rounded Edge Taper	848R 18 10		D6/005D 60032184
Round End Taper Long	850L 16 12		D1/005D 60032228
Round End Taper Long	850L 18 12		D1/005D 60032226
Round End Taper Long	850L 20 12		D1/005D 60032230
Round End Taper Narrow	850N 14 10		D6/005D 60032232
Round End Taper Long	856L 12 10		D1/005D 60032340
Round End Taper Long	856L 14 10		D1/005D 60032342
Round End Taper Long	856L 16 10		D6/005D 60032344
Round End Taper Long	856L 18 10		D1/005D 60032346
Round End Taper Long	856L 20 11		D6/005D 60032352
Round End Taper Long	856L 22 11		D1/005D 60032356
Round End Taper Long	856L 24 11		D1/005D 60032354
Round End Taper Long	856L 26 11		D6/005D 60032362
Round End Taper Long	856L 28 11		D6/005D 60032360
ET4	10 4.2		D2/005D 60032713
ET6	14 6		D2/005D 60032715
ET9	14 9		D2/005D 60032714
KS0	10 7		D2/005D 60032698
KS0	10 7		D2/005D 60032690
KS1	12 7		D2/005D 60032716
KS1	12 7		D2/005D 60032717
KS2	14 8		D2/005D 60032718
KS4	24 4.2		D2/005D 60032719
KS4	24 4.2		D2/005D 60032720
KS5	31 6.2		D2/005D 60032721
KS6	25 9		D2/005D 60032722
KS7	54 1		D2/005D 60032723
Egg/Football	379T 5		D3/005D 60031812
Occlusal Reduction/Barrel	811T 33 5		D3/005D 60031946
Flat End Cylinder	836T 14 6		D3/005D 60032046
Flat End Cylinder	836T 16 6		D3/005D 60032048
Round End Taper	850Z 18 10		D5/005D 60032444
Round End Taper	856Z 18 8		D5/005D 60032380
Flame	862Z 14 8		D5/005D 60032468
Flame	863Z 14 10		D5/005D 60032482
Round End Cylinder	881Z 14 8		D5/005D 60032620
Round End Cylinder	881Z 16 8		D5/005D 60032623

MEET THE TEAM



Laura Whyte
07788 146 109
laura.whyte@coltene.com
Scotland



Debi Boynton
07764 327 425
debi.boynton@coltene.com
North West



Emily Downie
07889 227 424
emily.downie@coltene.com
North East



Nick O'Keeffe
00353 8641 35766
nicholas.okeeffe@coltene.com
Ireland



Emma Gilks
07906 749 682
emma.gilks@coltene.com
West Midlands & North Wales



Sue Robins
07786 965 019
sue.robins@coltene.com
East Midlands



Andrew Miller
07788 583 057
andrew.miller@coltene.com
South Wales & West Country



Eva Fedorowicz
07818 424 210
eva.fedorowicz@coltene.com
North, East, West
& Central London



Louise Fish
07788 146 130
louise.fish@coltene.com
Essex, South London
& South Coast

UK OFFICE - SUSSEX



Nic Coomber
01444 235 486 - Ext 204
National Account Manager
& Marketing Strategist



Helen Chart
01444 235 486 - Ext 202
Finance & Office Manager

*Offer ends 31.03.2025. Available from participating suppliers. RRP's may vary with supplier.
For free item offers, free item from supplier unless otherwise stated.

© COLTENE – Printing errors, mistakes and changes reserved.



0800 254 5115 | info.uk@coltene.com | www.coltene.com

Coltene/Whaledent Ltd., The President Suite A, Kendal House, Victoria Way, Burgess Hill, West Sussex RH15 9NF

